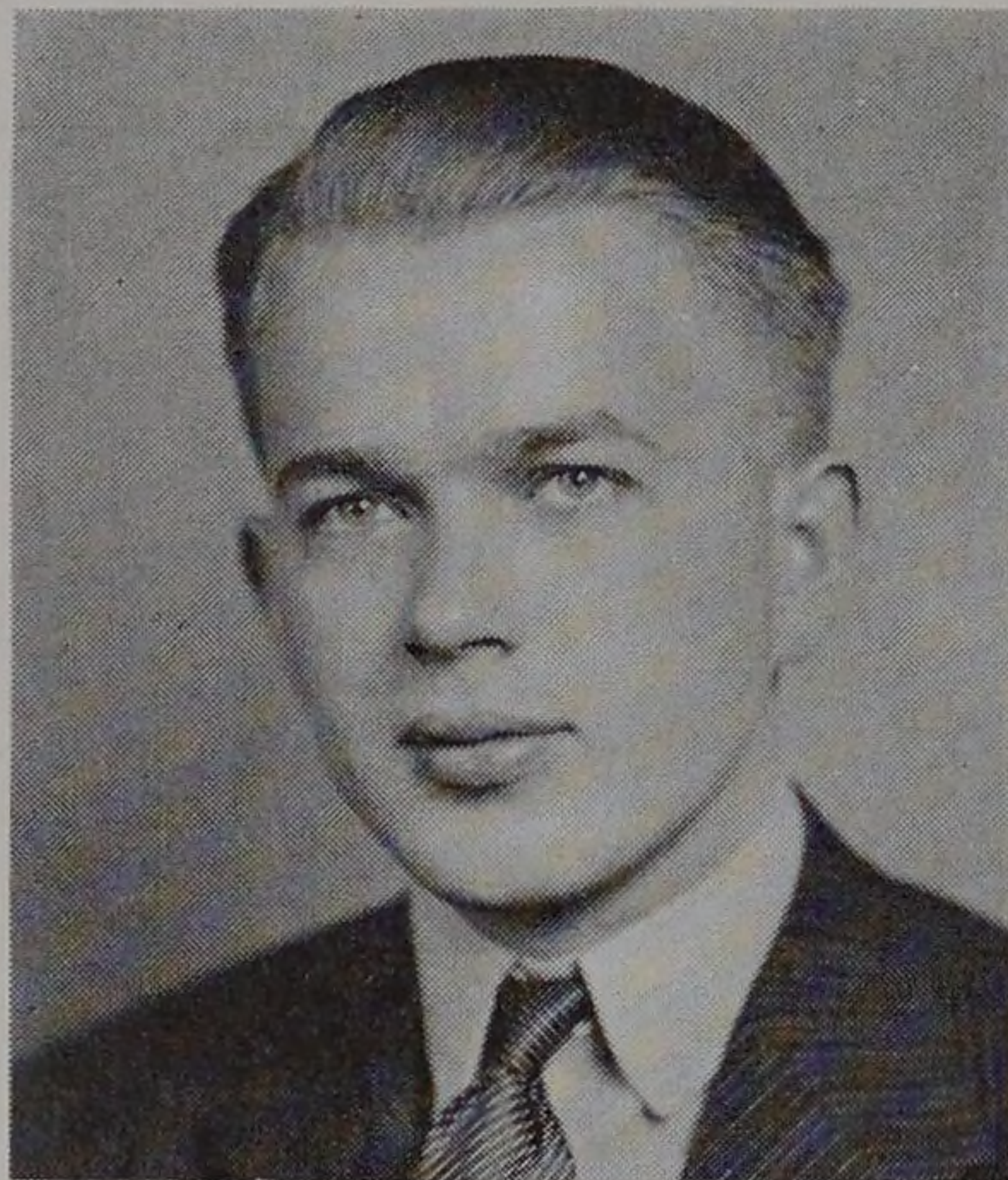


STUDENT UNION BOARD OF CONTROL



D. Sunde



B. Weissman

THE BOARD

Don Sunde, *senior*
Charles McAleer, *junior*
Earle Huxhold, *sophomore*
Richard Malquist, *freshman*
Frank Heidenreich, *co-op*
David Whittingham, *co-op*
Bernard Weissman, *manager*

The guiding hands behind the operation of the new Student Union belong to the men who comprise the managing board. Composed of seven student members and one faculty manager and advisor, these men determine the various policies for the administration of the building. Rules of conduct that the students must follow when using the Union, amounts of money to be spent for improvements around the building from time to time, and the allotment of rooms for student activities, are among its many duties.

Meetings are held every two weeks, or more frequently if the occasion warrants. Important steps toward the provision of added facilities during the past year have included the conversion of the second floor southwest room in the Union into a rest room for ill students and the acquisition of ping pong tables and rubber mats to convert room U2E into a game room. The purchasing and placing of the new trophy cases in the main student lounge and the handling and purchasing of new records for the radio-victrola in the lounge, with the purchase of a filing cabinet for the phonograph records have enhanced the lounge and given many hours of musical enjoyment.

