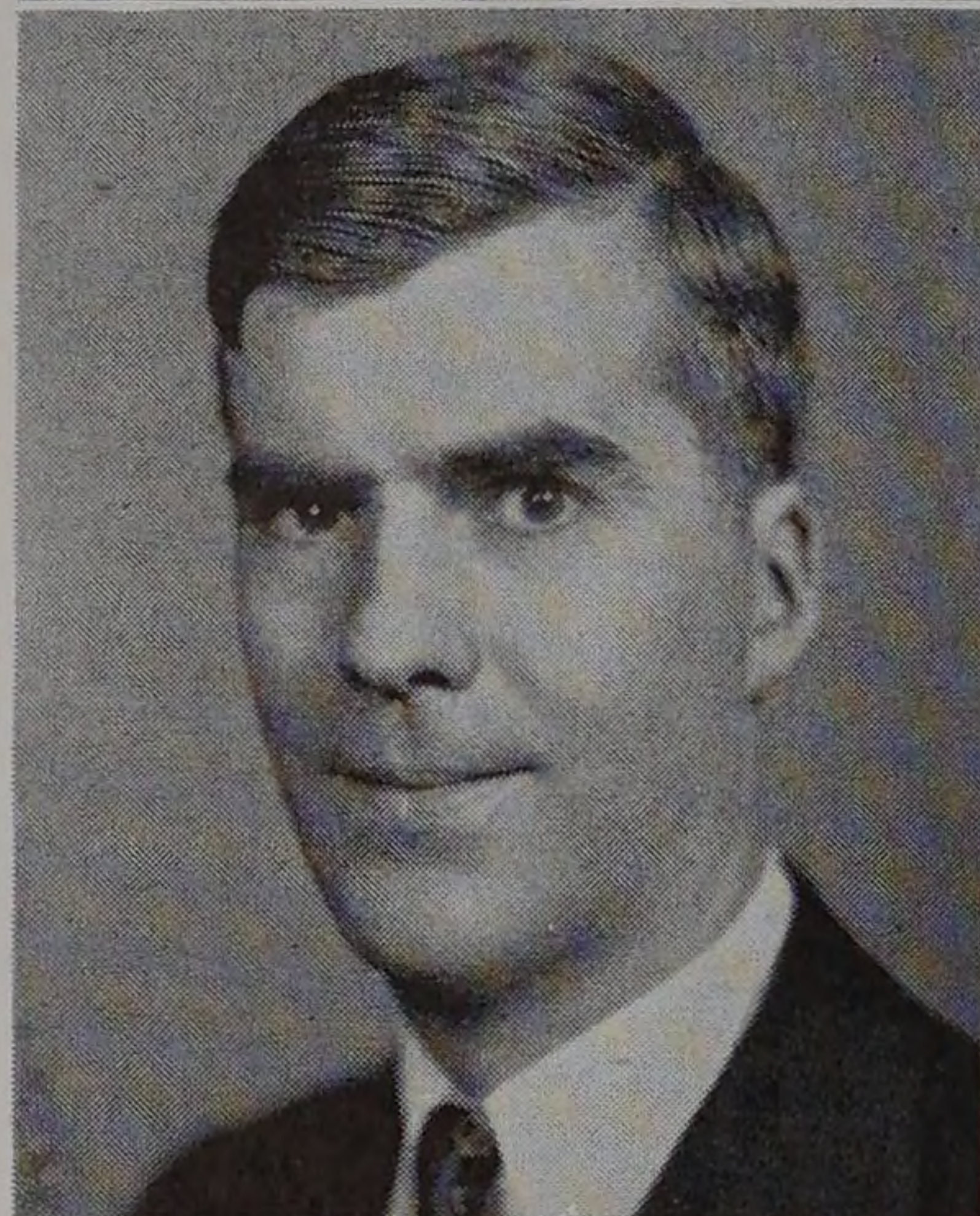




# STANTON EDWARD WINSTON

Associate Professor of Mechanical Engineering  
A.B. and A.M. University of Denver  
B.S. and M.E. Armour Institute of Technology, Colorado School of Mines  
Pi Tau Sigma



# GEORGE ELLIOTT ZIEGLER

Assistant Professor of Physics  
B.S., M.S. and Ph.D. University of Chicago  
Sigma Xi

# ALFRED WILLIAM KUBE

Instructor in Foundry  
B.S. Stout Institute, Gary College  
University of Indiana

# HERBERT BRADLEY NOTTAGE

Instructor in Mechanical Engineering  
B.S. and M.S. University of California  
Tau Beta Pi

# ALMA MATER

Armour, with thy towering halls;  
Our Alma Mater, sacred shrine that calls.  
Her youth to labor, seeking far beyond;  
Armour, spirit aflame;  
Armour, glorious thy name.

Armour, may thine honor be,  
Thy sons' achievements, over land and sea.  
Visions of progress, these are all thine own;  
Armour, spirit aflame;  
Armour, glorious thy name.