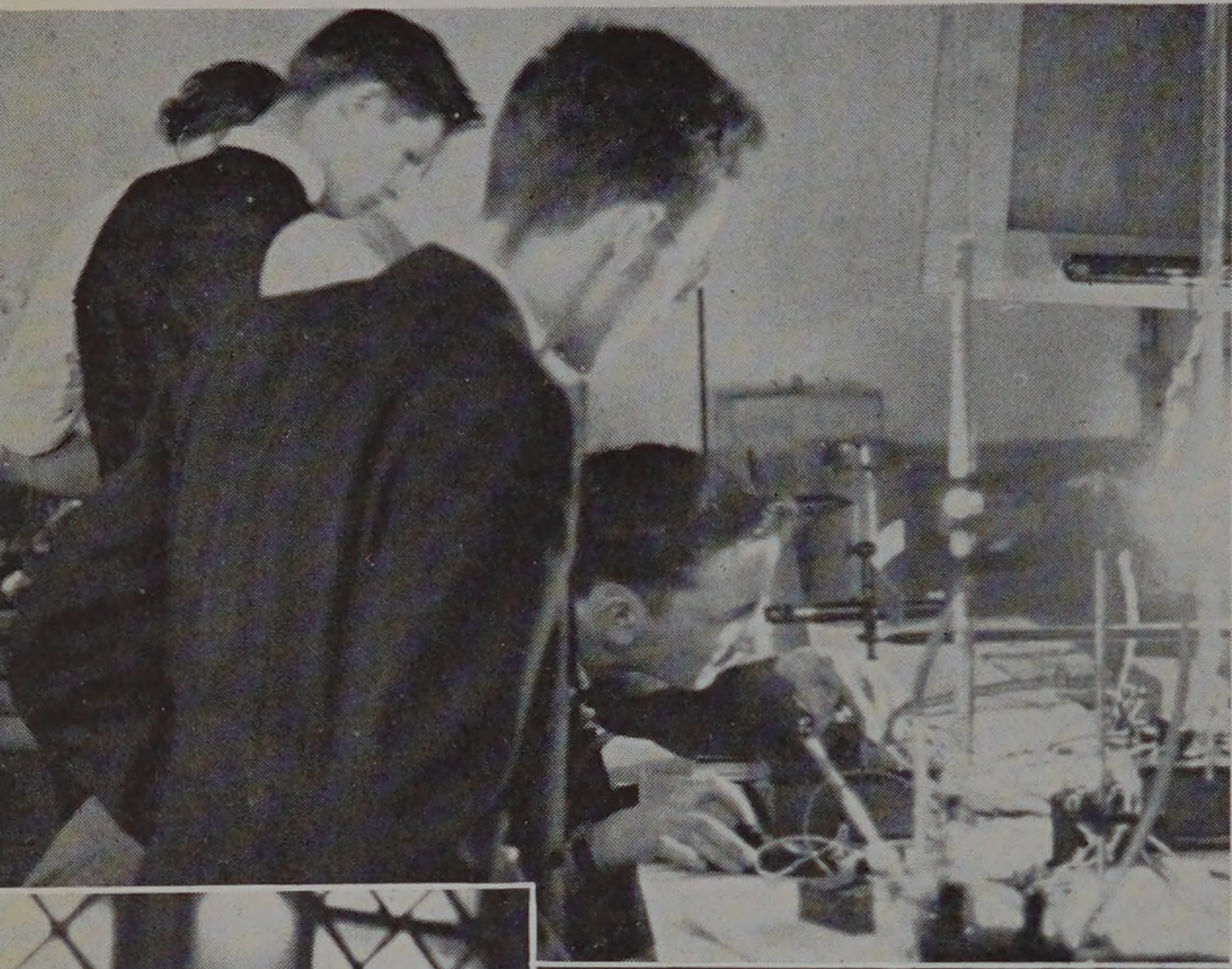


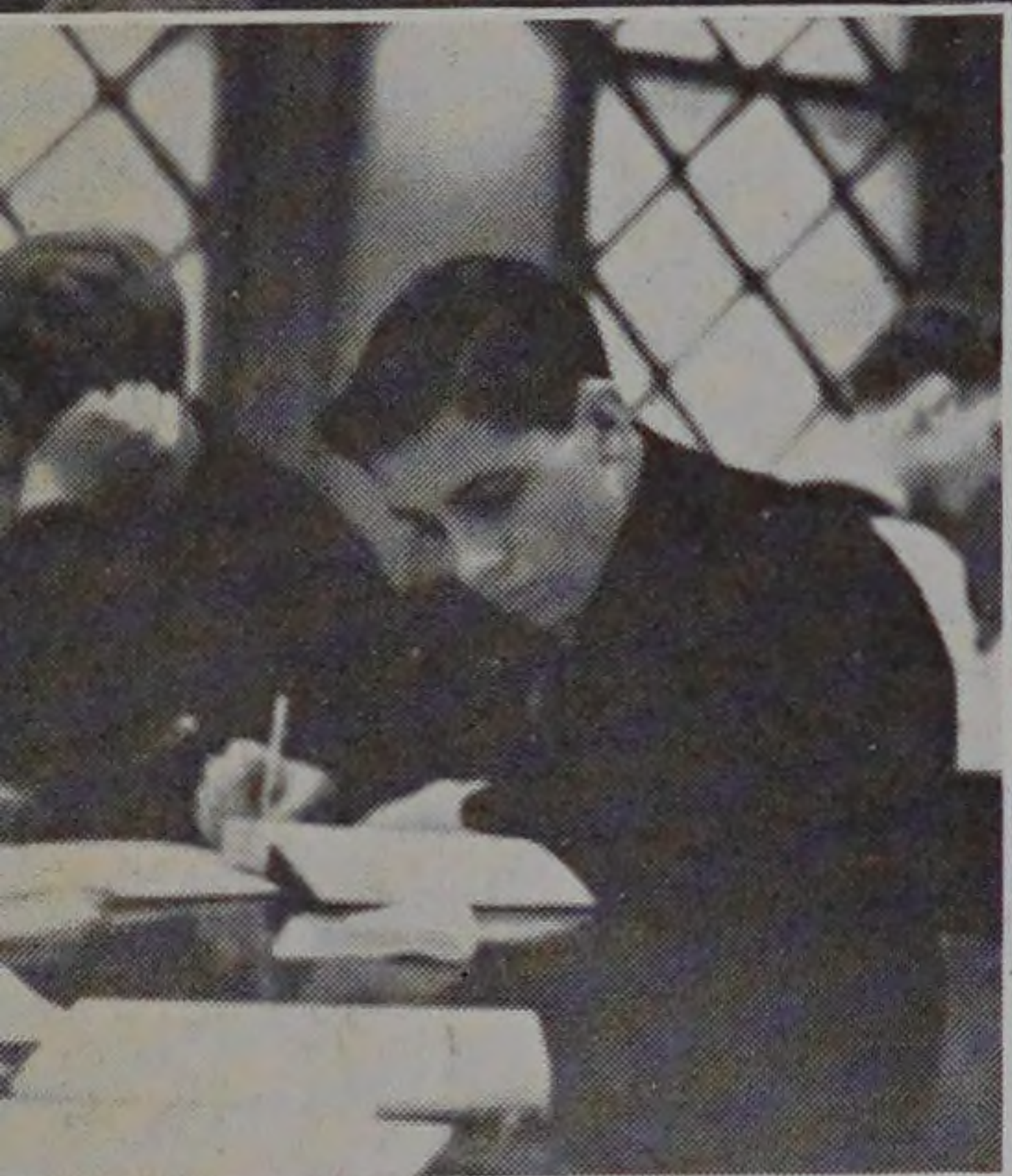
# HERE AND THERE



Chem Engineering Lab.



Main from 33rd and the tracks.



Danger!  
Men Working.



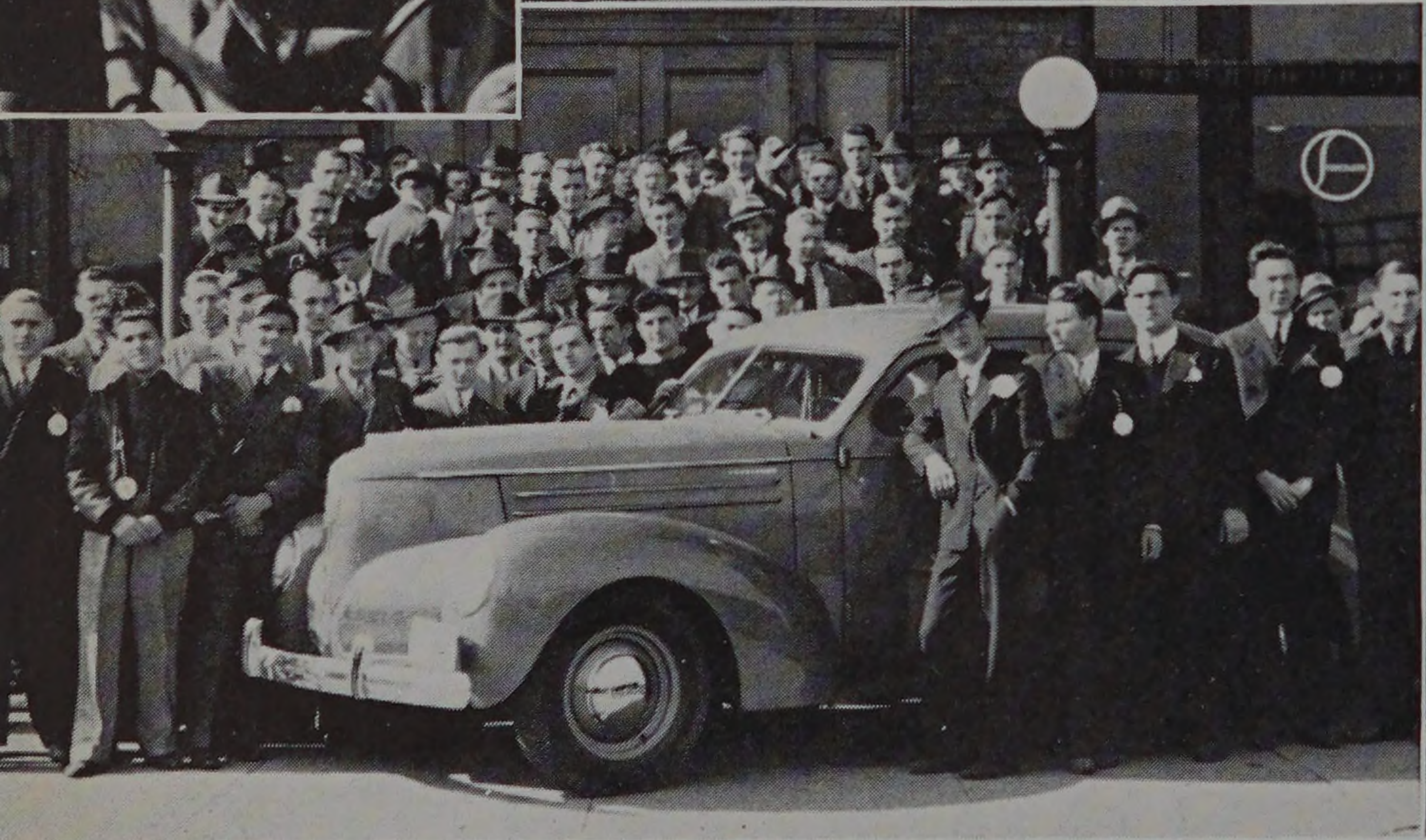
If I had the wings  
of an angel.



Entrance to Main.



That's close enough,  
let's go.



Sr. Mechs at  
South Bend.



Tony and his  
Thermo.



After remodeling.



1 FPE and 3 Civils.



Gotta go now.