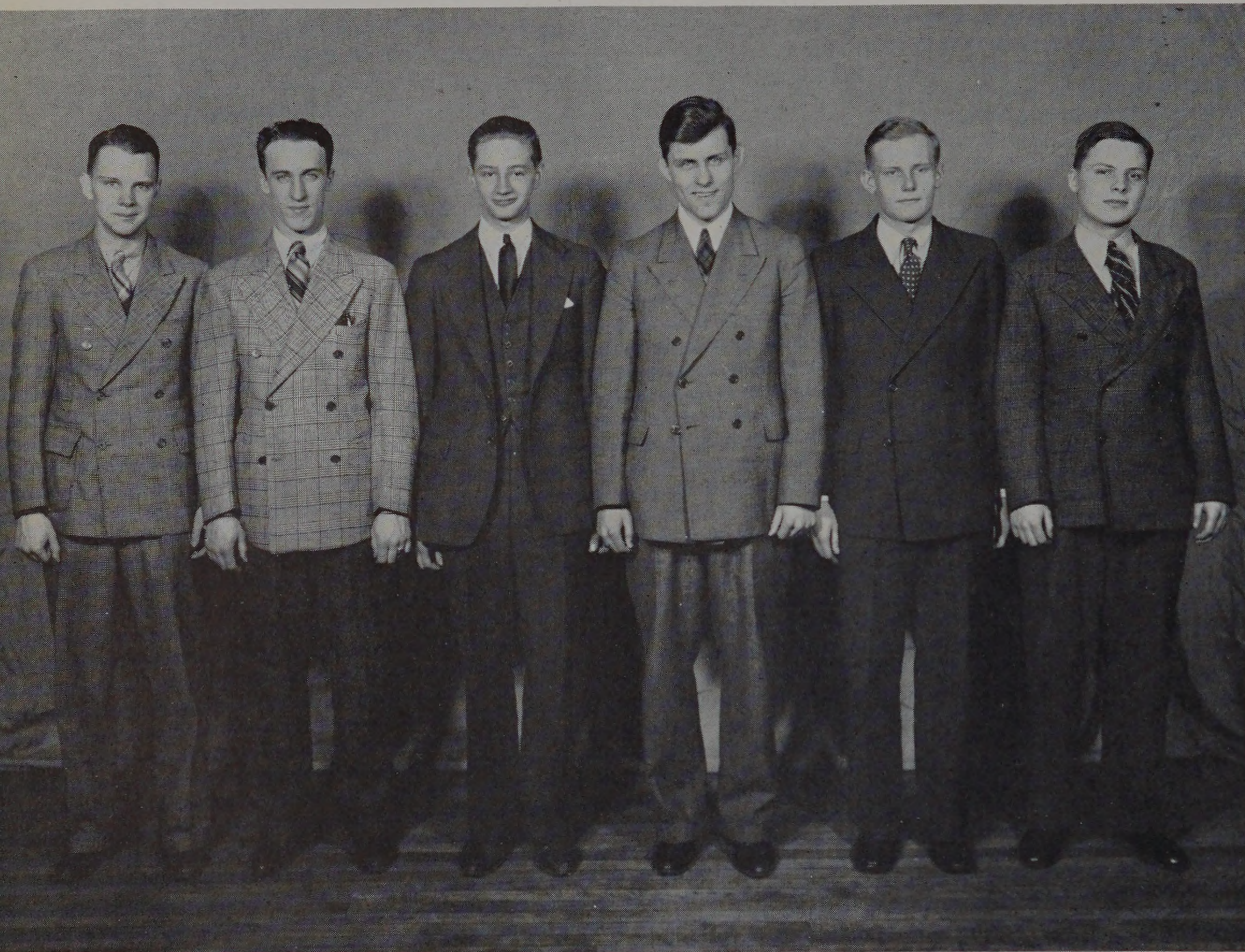


T H E S O P H S



Knief
Murray
Reh
Pfeffer
Jacobsen
Sweeney

Kenneth Myers	President
Frank Reh	Vice-President
Joseph McErlean	Secretary
Donald Knief	Treasurer
James Murray	Social Chairman
Robert Sweeney	A. T. S. A. Representative

How different it is to enroll at Armour this year compared with the task of the year previous! We entered not as a group of struggling freshmen, alone, hesitant and worried, but as a unit with friends and companions on all sides ready to continue our study of engineering. It felt good to return to school, to the grounds and even to the faculty. We imagined ourselves to be a part of Armour, and we were determined to uphold both the school and our class in the year that was to follow.