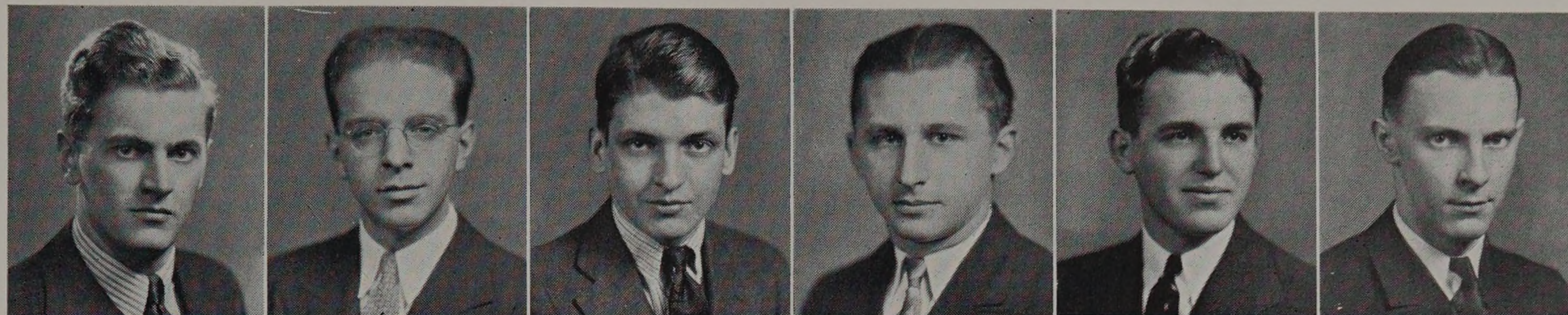
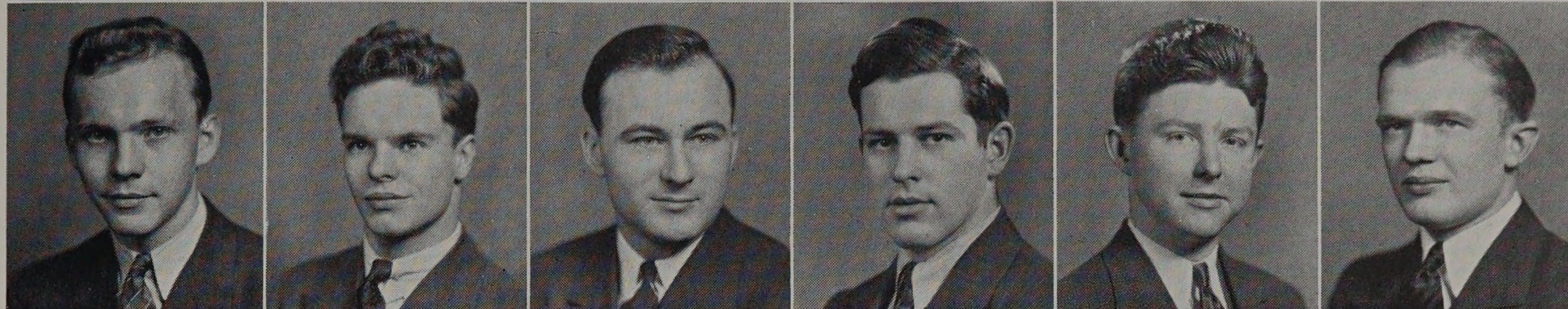


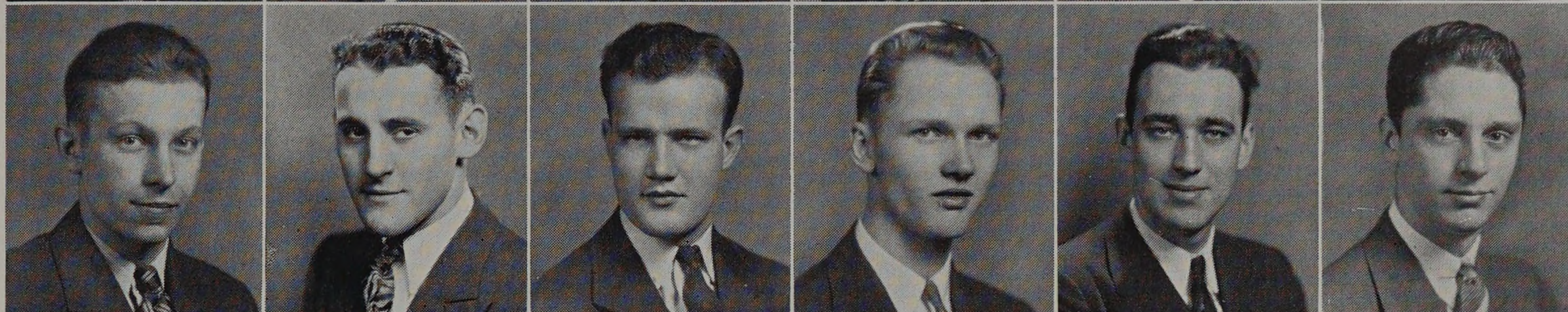
Adesko
Anderson
Bain
Berger
Bodnar
Boertitz



Danek
Dunne
Green
Hoffman
Keane
Koehler



Kruse
Kubik
Loutzenheiser
Lyckberg
Macdonald
Marshall



Mirzvinskis
Morris
O'Connell
Peltier
Peterson
Ryan
Ryant



Sellen
Smith
Thodos
Velvel
Wagner, E. F.
Wagner, E.
Widell



The most recent student engineering fraternity to be instituted at Armour is a chapter of a professional, chemical fraternity, Alpha Chi Sigma. This large, national fellowship was founded thirty-six years ago at the University of Wisconsin. The organization expanded rapidly, and it soon had chapters at the more prominent chemical colleges. Likewise, the alumni association which has grown with the student fraternity has expanded into a group of seventeen professional chapters. These chapters are scattered throughout the larger industrial centers of the country, and they aid the student branches in many activities. It is such alumni and professional association that has enabled the fraternity to bring students and professional chemists into official and intimate proximity. Placement bureaus maintained by the alumni groups have aided undergraduates to secure employment in the chemical field and have further enhanced the alumni societies to the undergraduate organization. The value of affiliation with such a fraternity was apparent to members of the Flask and Beaker, a club of students of the chemical engineering department of Armour. The group petitioned to become a chapter of the fraternity, and on December 13, 1930, the members of the Flask and Beaker were initiated into Alpha Chi Sigma. Alpha Psi chapter was formed at Armour, and it became the forty-seventh chapter of the society. As a chapter of Alpha Chi Sigma it continued to maintain its position as a well formed group.

Alpha Psi Chapter 1930

