

WILLIAM B. AHERN

Instructor in Electrical Engineering
B.S. Armour Institute of Technology
Tau Beta Pi, Eta Kappa Nu, Sphinx

CARL G. ANDERSON (No picture)

Instructor in Mechanical Engineering
B.S. Armour Institute of Technology
M.A. and Ph.D. University of Michigan
Tau Beta Pi, Pi Tau Sigma, Sphinx

SAMUEL FLETCHER BIBB

Assistant Professor of Mathematics
S.B. and S.M. University of Chicago
Sigma Xi, Pi Kappa Phi

CARROLL P. BRADY

Instructor in Mathematics
(No biography)

ARTHUR HOWE CARPENTER

Associate Professor of Metallurgy
A.M. Ohio University
Phi Lambda Upsilon, Pi Mu, Alpha Chi Sigma, Delta Tau Delta

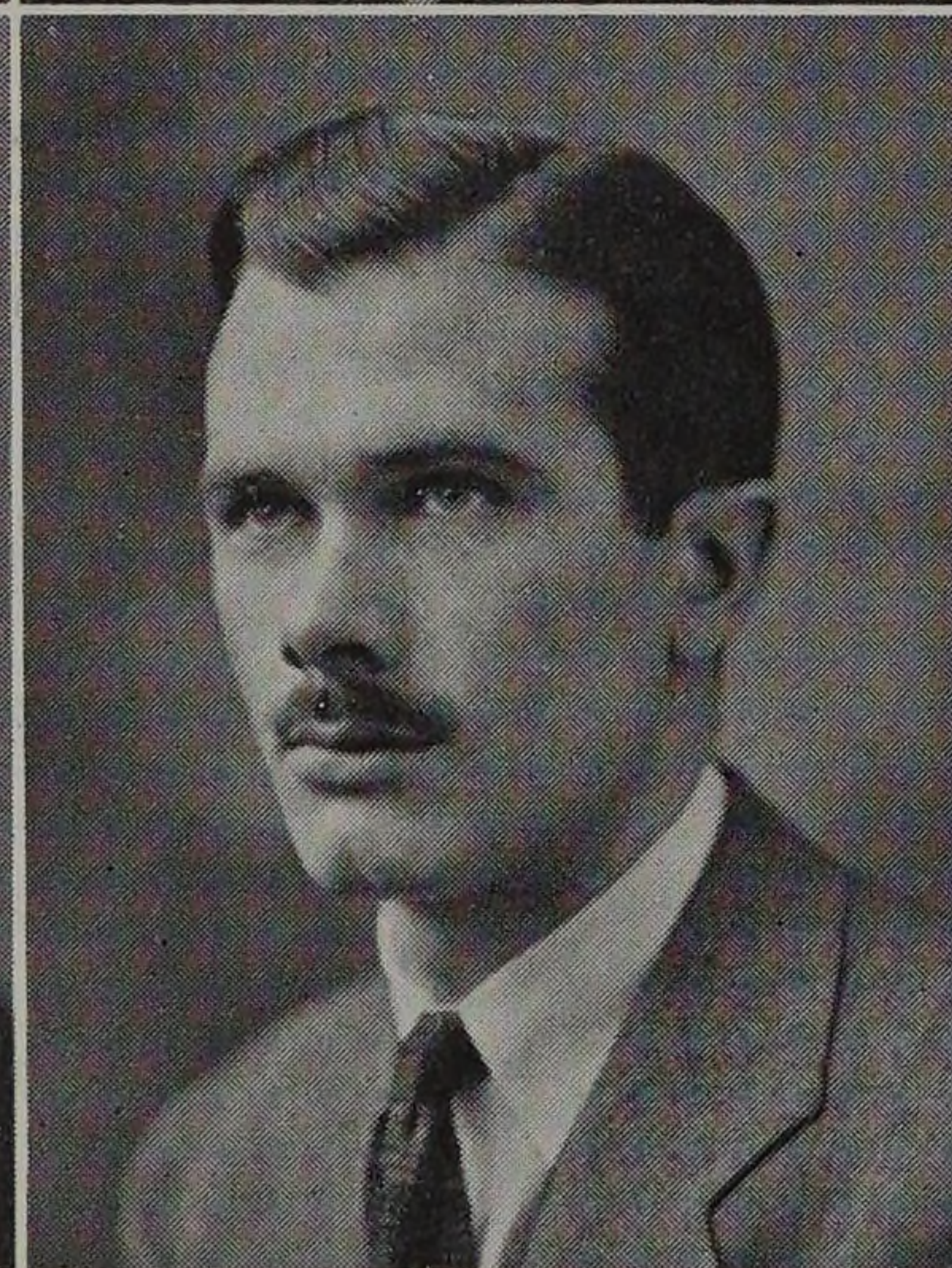
DAVID CHAPMAN

Instructor in Architectural
Modeling and Industrial Design
B.S. Armour Institute of Technology.
Sphinx.

Ahern
Carpenter

Bibb
Chapman

Brady
Combs



ESTHER ELOISE CHESIRE (No picture)

Assistant Librarian
B.A. University of Iowa
B.S. University of Illinois, St. Louis University
Theta Pi Alpha

WILLIAM WHITE COLVERT (No picture)

Associate Professor of Physics
A.B. and A.M. Cumberland University
Sigma Xi, Sphinx

HOMER C. COMBS

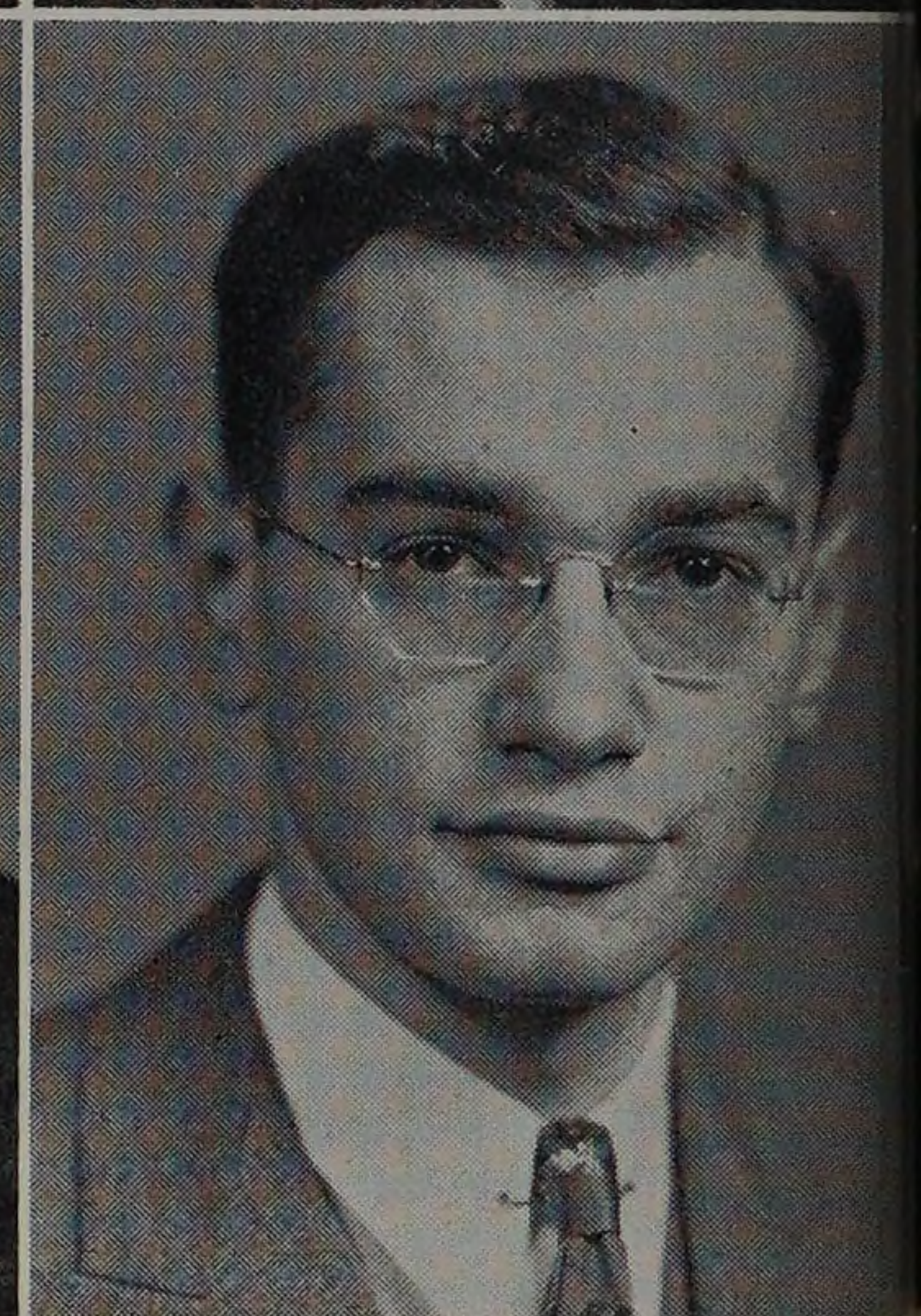
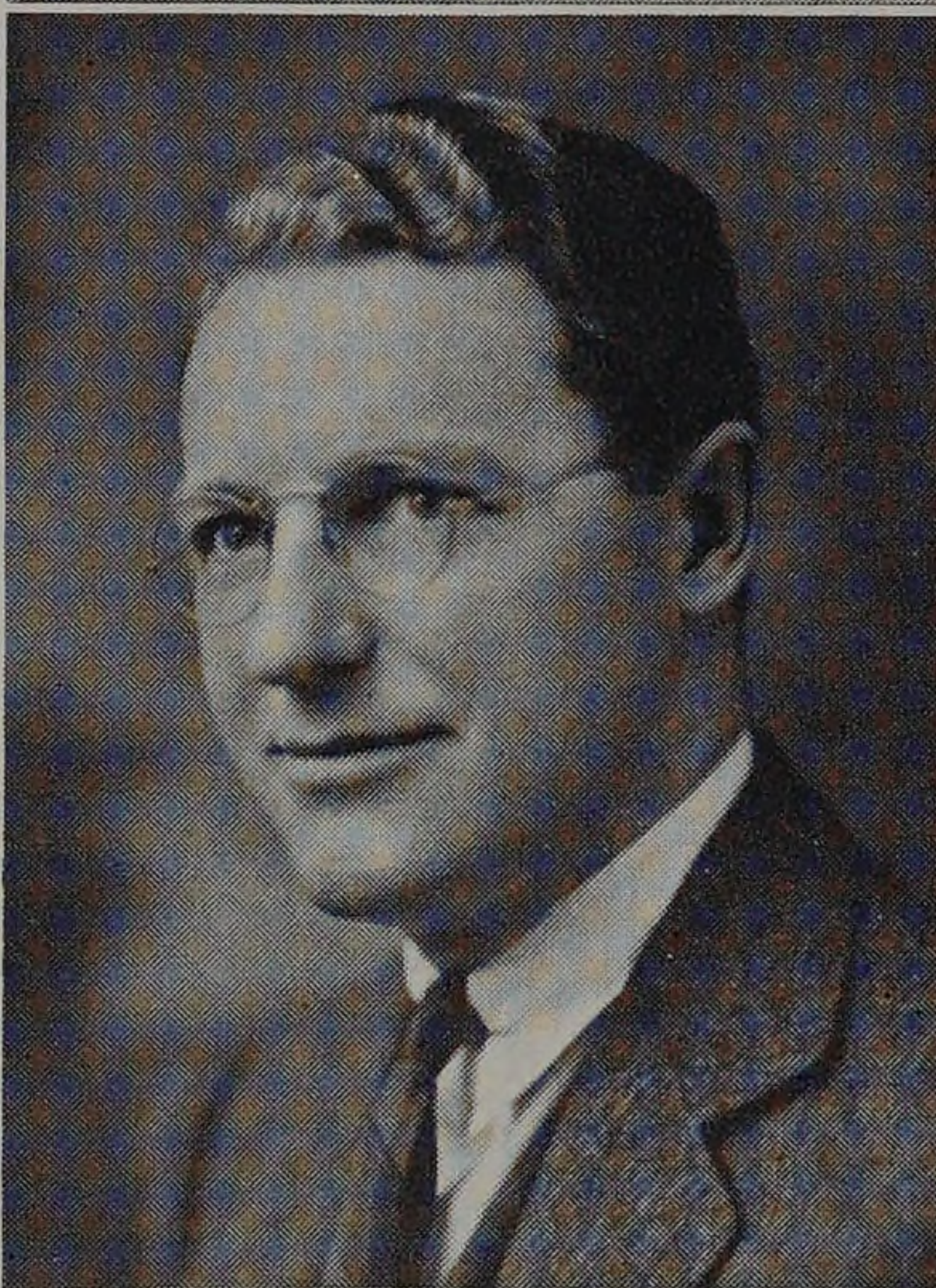
Instructor in English
A.B. Georgetown College
A.M. Northwestern University

PAUL L. COPELAND

Associate Professor of Physics
B.A. Nebraska Wesleyan College
M.S. and Ph.D. State University of Iowa
Phi Kappa, Pi Kappa Delta, Sigma Xi

ALEXANDER COWIE (No picture)

Instructor in Mechanical Engineering
B.S. University of Wisconsin
M.S. University of Michigan
Tau Beta Pi, Pi Tau Sigma, Phi Eta Sigma



Copeland
Dornbusch

Davis
Ensz

Dohrenwend
Freireich

WATSON M. DAVIS

Assistant Professor of Mathematics
A.B. Cornell College
M.S. University of Iowa
Ph.D. University of Chicago
Sigma Xi, Phi Tau Theta

CLAYTON O. DOHRENWEND

Instructor in Civil Engineering
C.E., M.C.E. and M.S. Rensselaer Polytechnical Institute
Sigma Xi

CHARLES H. DORNBUSCH

Associate Professor of Architecture
(No biography)

HERBERT ENSZ

Associate Professor of Civil Engineering
B.S. and C.E. University of Colorado
Chi Epsilon

ERNEST FREIREICH

Instructor in Chemical Engineering
B.S. and M.S. Armour Institute of Technology