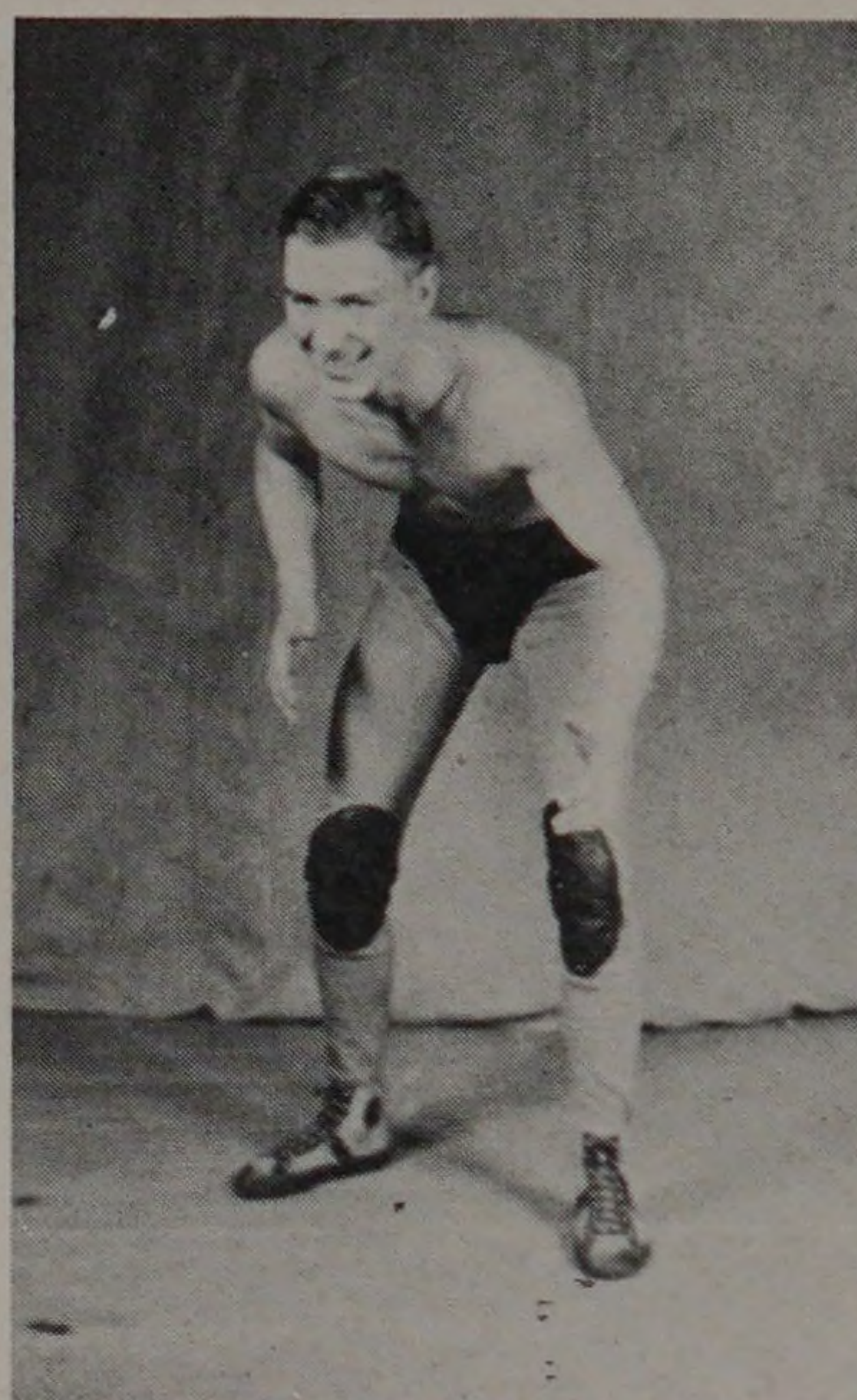


Coach Weissman



Captain Sumner



Schmidt



Manager Majercik

WRESTLING SEASON OF 1935-36

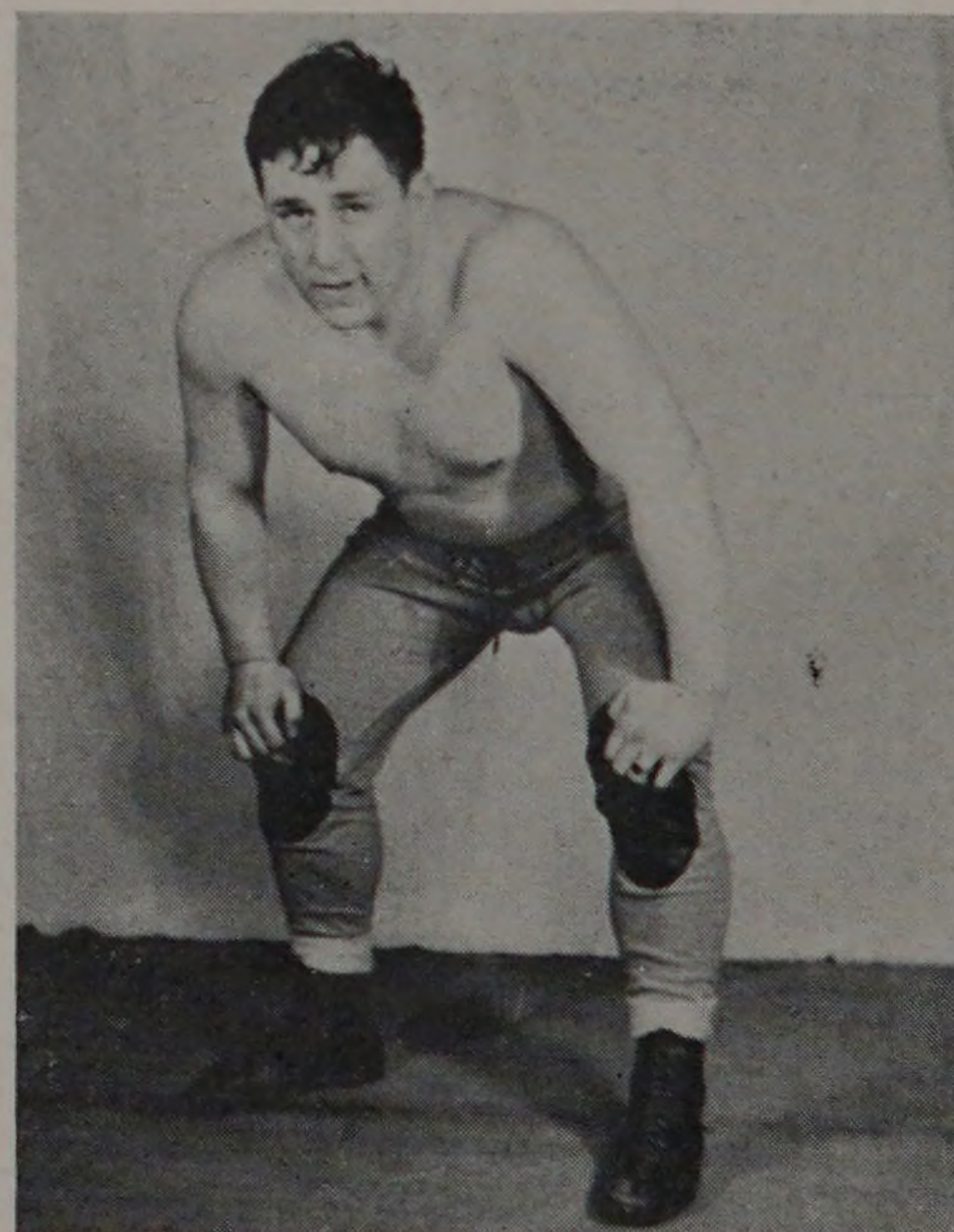
Bernard Weissman	Coach
Hermon J. Sumner	Captain
A. S. Majercik	Manager

Under the able leadership of Captain Hermon Sumner, the Tech wrestling squad closed the season with six victories and four losses. This tally is imposing when we look over the tough schedule arranged by Manager A. S. Majercik. The squad was handicapped throughout the season by having one or more its members either sick or injured. Peterson, the veteran heavyweight, was out practically all season because of illness, and Captain Sumner was unable to do his best because of a cracked rib sustained in the meet with Chicago University. Roy Kercher was also forced to drop out at the beginning of the season, due to injury.

A glance at the individual records shows that Schmidt, Patterson, Kreml, Tullgren and Dunne did outstanding work. Schmidt's two losses were the first which he suffered in four years of intercollegiate competition. They were probably due to the fact that he was not wrestling in his own weight class. All the men mentioned above fought in every meet, and it is comforting to realize that they will be back with the exception of Schmidt and Patterson.



Wrestling Squad



Peterson