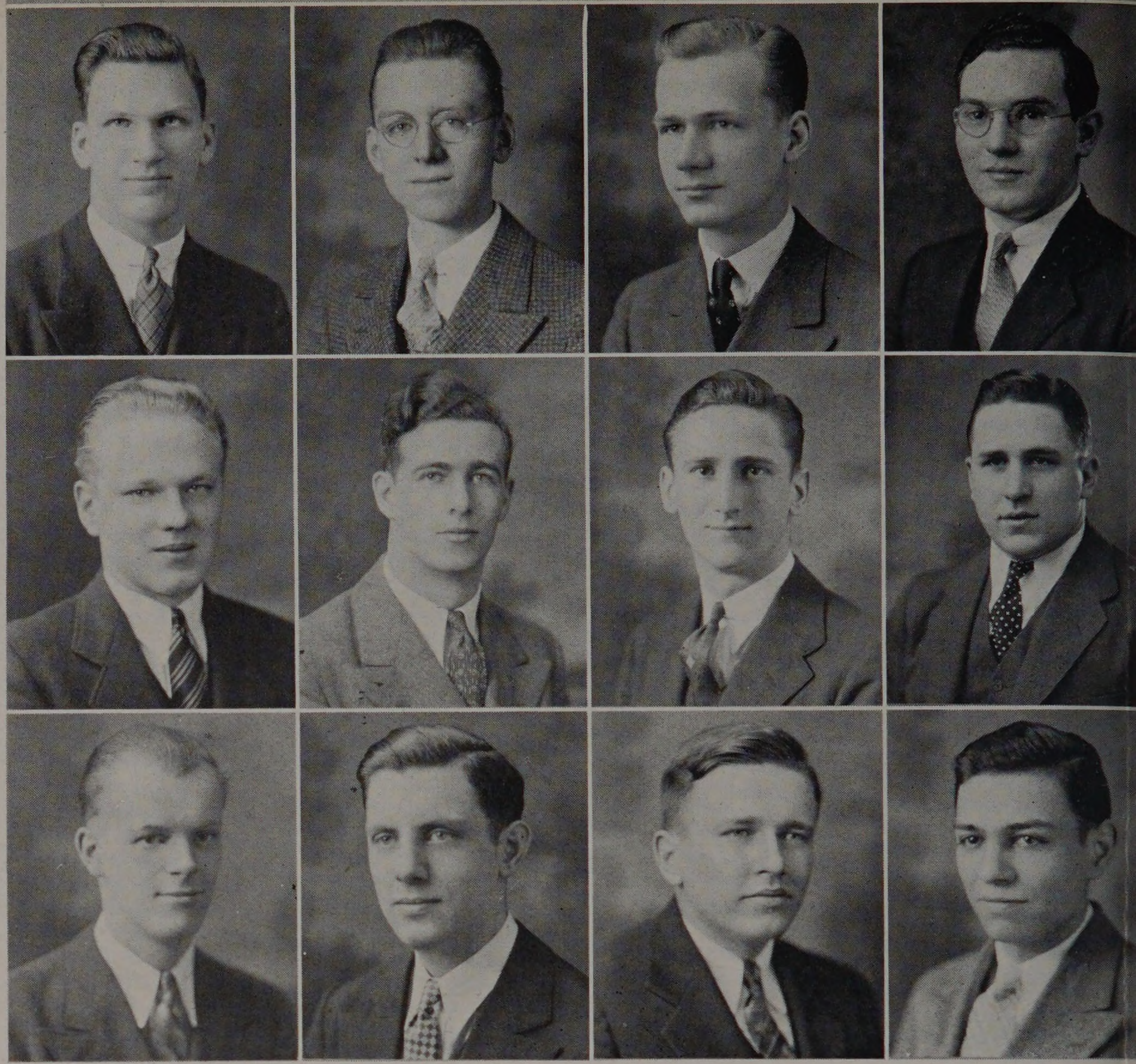


# Class of 1936



## Sven T. Nylén

Chicago, Illinois

B.S. in Civil Engineering

Fenger High School, Chicago, Illinois. Chi Epsilon; Campus Club 2, 3, 4; W.S.E. 3, 4; Basketball 2, 3; Interclass Baseball 1, 2, 3, 4; Interclass Basketball 1, 2, 3, 4.

## Curtis H. Parsons

Chicago, Illinois

B.S. in Mechanical Engineering

St. John's Military Academy, Delafield, Wisconsin. Theta Xi; Glee Club 1.

## Robert C. Peterson

Chicago, Illinois

B.S. in Chemical Engineering

Lake View High School, Chicago, Illinois. Glee Club 1, 2; Alpha Chi Sigma; Chemalumn; A.I.Ch.E. 3, 4; Cycle Staff Photographer 3, 4; Cap and Gown Committee 4.

## Alfred G. Olson

Chicago, Illinois

B.S. in Mechanical Engineering

Tilden Technical High School, Chicago, Illinois. Math Club 3, 4; Aero Club 2, 3, 4; Glee Club 2, 3, 4; A.S.M.E. 3, 4.

## Robert O. Patterson

Chicago, Illinois

B.S. in Mechanical Engineering

Nicholas Senn High School, Chicago, Illinois. Honor A; Sphinx; Campus Club 1, 2, 3, 4; President 4; A.S.M.E. 3, 4; Wrestling 1, 2, 3, 4, Captain 2; Engineer 1, 2, 3, 4, Comptroller 3; Cycle Circulation Manager 3; Class Social Committee 3; Class Announcements Committee 4.

## Charles J. Pfeffer

Chicago, Illinois

B.S. in Architecture

Lane Technical High School, Chicago, Illinois. Pleiades; Scarab; A.A.S. 1, 2, 3, 4.

## Edward W. Olson

Chicago, Illinois

B.S. in Architecture

Austin High School, Chicago, Illinois. Delta Tau Delta; Scarab; A.A.S. 1, 2, 3, 4.

## Robert M. Paulsen

Chicago, Illinois

B.S. in Chemical Engineering

Carl Schurz High School, Chicago, Illinois. Phi Lambda Upsilon; Tau Beta Pi; Alpha Chi Sigma; Glee Club 1, 2, 3, 4; Orchestra 1, 2, 3, 4; A.I.Ch.E. 3, 4; Chemalumn; Interclass Baseball 1, 2, 3, 4; Cycle, Advertising Manager 3; Social Committee 2, 3, 4, Chairman 4; Junior Marshal 3.

## Joseph Pfendt

Chicago, Illinois

B.S. in Architecture

Lane Technical High School, Chicago, Illinois. Pleiades; A.A.S. 1, 2, 3, 4.

## George W. Ormsby

Chicago, Illinois

B.S. in Engineering Science

Hyde Park High School, Chicago, Illinois. Musical Clubs 1, 2, 3, 4, President 4; Glee Club 1, 2, 3, 4; Orchestra 1, 2, 3, 4; Wrestling 4; Tech News 2, 3; Class President 1; Class Social Committee 3, 4.

## Raymond A. Peterson

Chicago, Illinois

B.S. in Fire Protection Engineering

Carl Schurz High School, Chicago, Illinois. Tau Beta Pi; Salamander, President 4; Black Knight; F.P.E.S. 1, 2, 3, 4; Wrestling 2, 3, 4; Tech News 2, 3; Cycle 4; Social Committee 1, 2; Class Treasurer 2; Junior Marshal 3; Class President 4.

## Paschal Pozzi

Joliet, Illinois

B.S. in Mechanical Engineering

Joliet Township High School, Joliet, Illinois. A.S.M.E. 3, 4; Math Club 3, 4.