

Manager Chapin

The Tech matmen defeated Wheaton, the Little Nineteen Champs, by a score of 20½ to 11½ in the second meet of the season. Dunne, Kreml and McIntyre disposed of their opponents in short order.

Illinois State Normal gave Armour its first defeat of the year to the score of 22-10. Kreml and Dunne pinned their men to give Armour its only score.

Armour came back in the next meet by swamp-ing Morton Junior College 29-5. Kreml, Tullgren and McIntyre pinned their opponents before they had time to warm up. The other points were scored by Basile, Logullo and Popper, who won by time advantages.

DeKalb was host to Armour in a return match, which found Armour on top of a 19-13 score. There was much discussion about the poor and unfair decisions of the referee, but not much could be done about it. Both Kreml and Dunne pinned their men, while Tullgren, Popper and McIntyre scored for Armour by riding their men for time decisions.

After journeying out to Wheaton, the Tech matmen were defeated by the score of 31 to 3. Popper was the only man who won his match; although the others tried their best, they soon found that their opponents were too tough for them.

The Tech grapplers scored their first shutout of the season when they piled up a score of 30 points to defeat North Central. McDaniel, Logullo and Tullgren pinned their opponents.

Illinois State Normal visited Armour for the next meet, and defeated Armour for the second time. Jimmy Dunne downed his opponent, but the rest of the team couldn't master their men.

Morton was trounced for the second time with Kreml pinning his man in 1:50, Tullgren pinning his in 1:20; McIntyre also winning by a pin, in 1:10. Logullo was another who put his opponent's shoulders to the mat. All of the rest of the team disposed of their men by getting a time advantage, except McDaniel, who lost his match.

The next meet of the season was with Culver. In the four bouts that were staged, Basile and Logullo pinned their opponents, Maxant won a time advantage, while Chapin was downed by his opponent.

Kreml
key-locks
Maxant



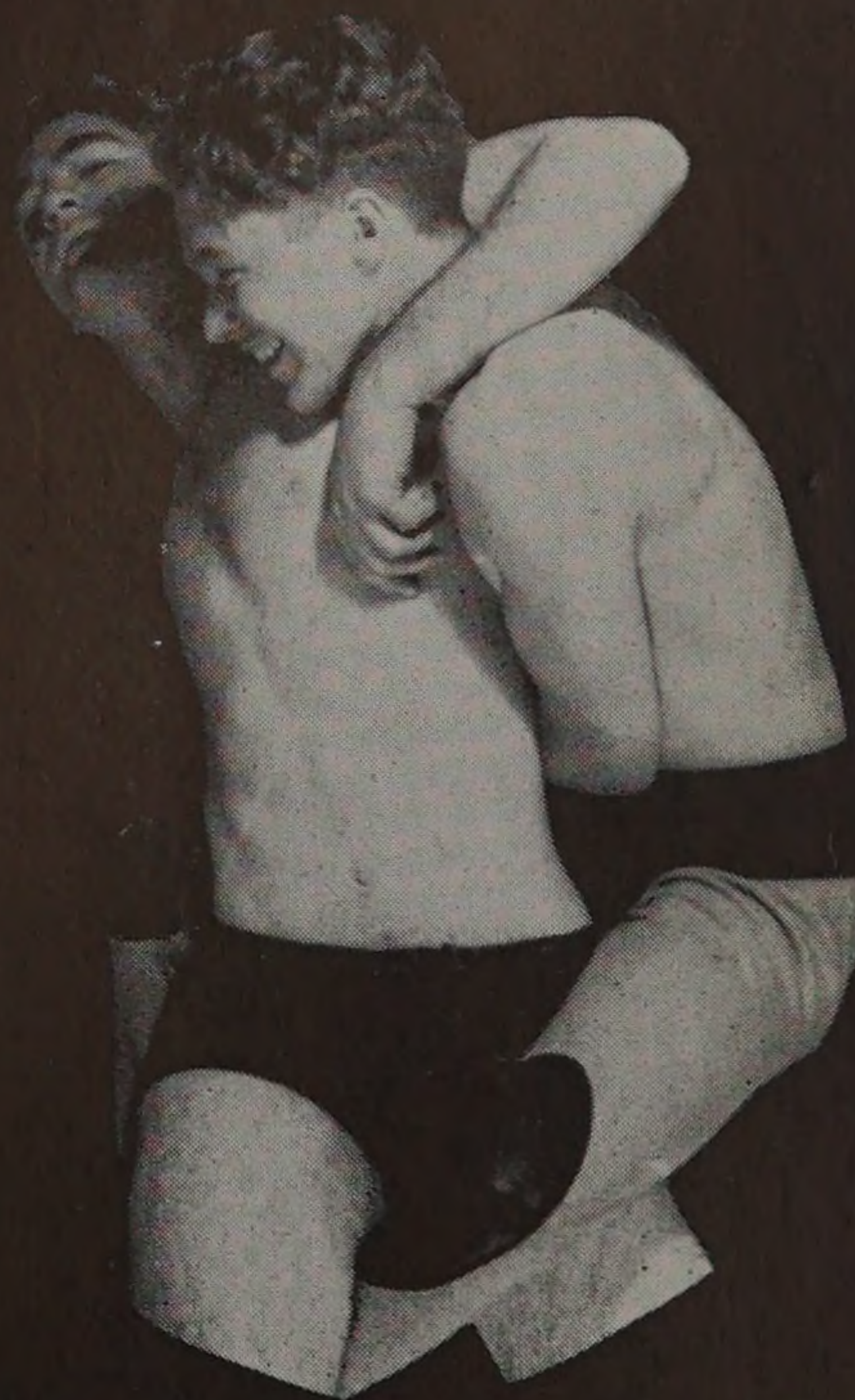
Popper
with
Wagner



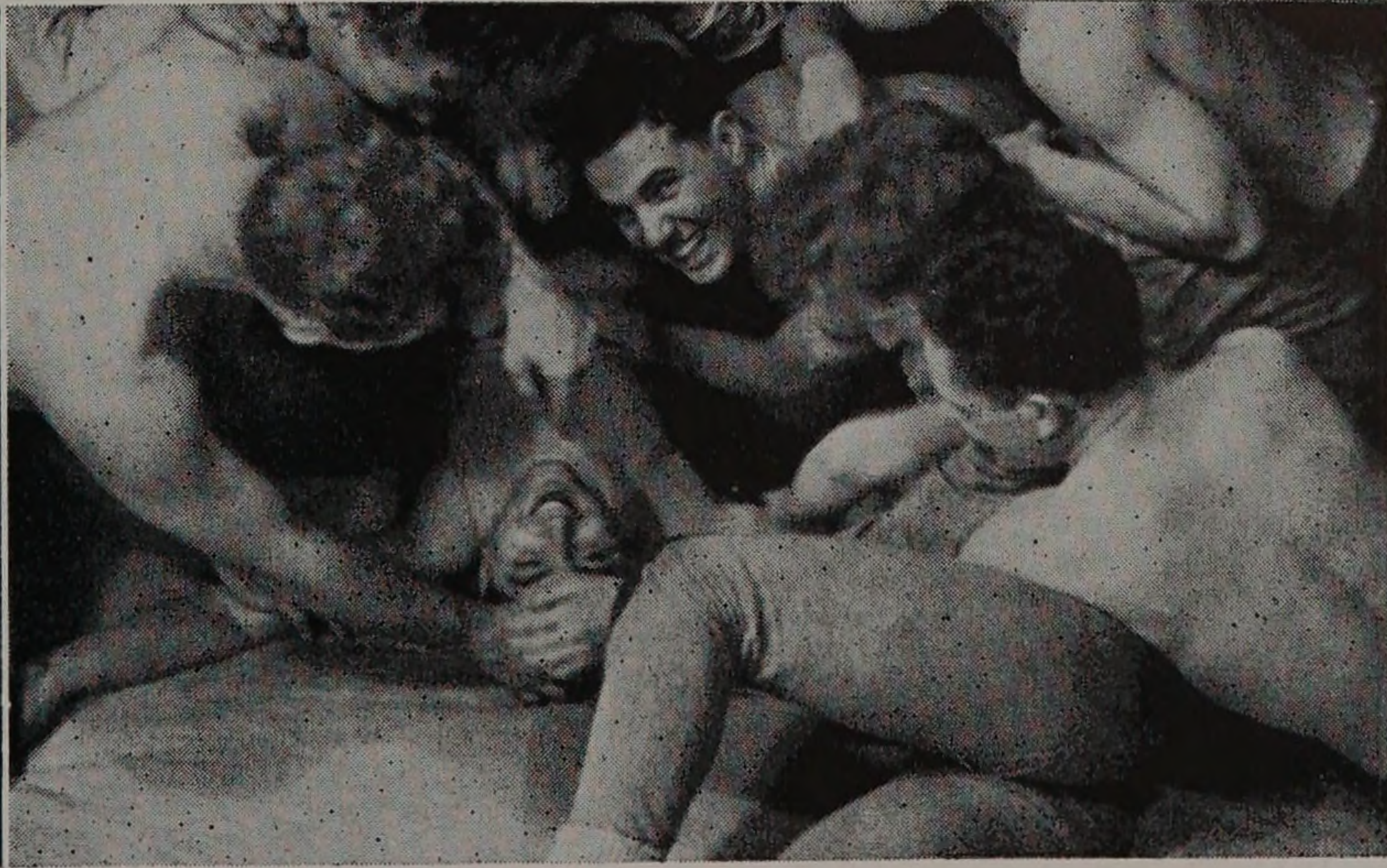
McIntyre
and
Tullgren



Chapin
and
Gerber



Teach Us Something, Coach



See What a Coach Has to Put Up With?

