

ACTIVE MEMBERS

Norman E. Colburn
 Harold W. A. Davidson
 Raymond A. Fleissner
 Edwin G. Hoffman
 Albert C. Ketler, Jr.
 George T. Korink
 Nicholas H. Kuehn
 Bertil W. Laestadius

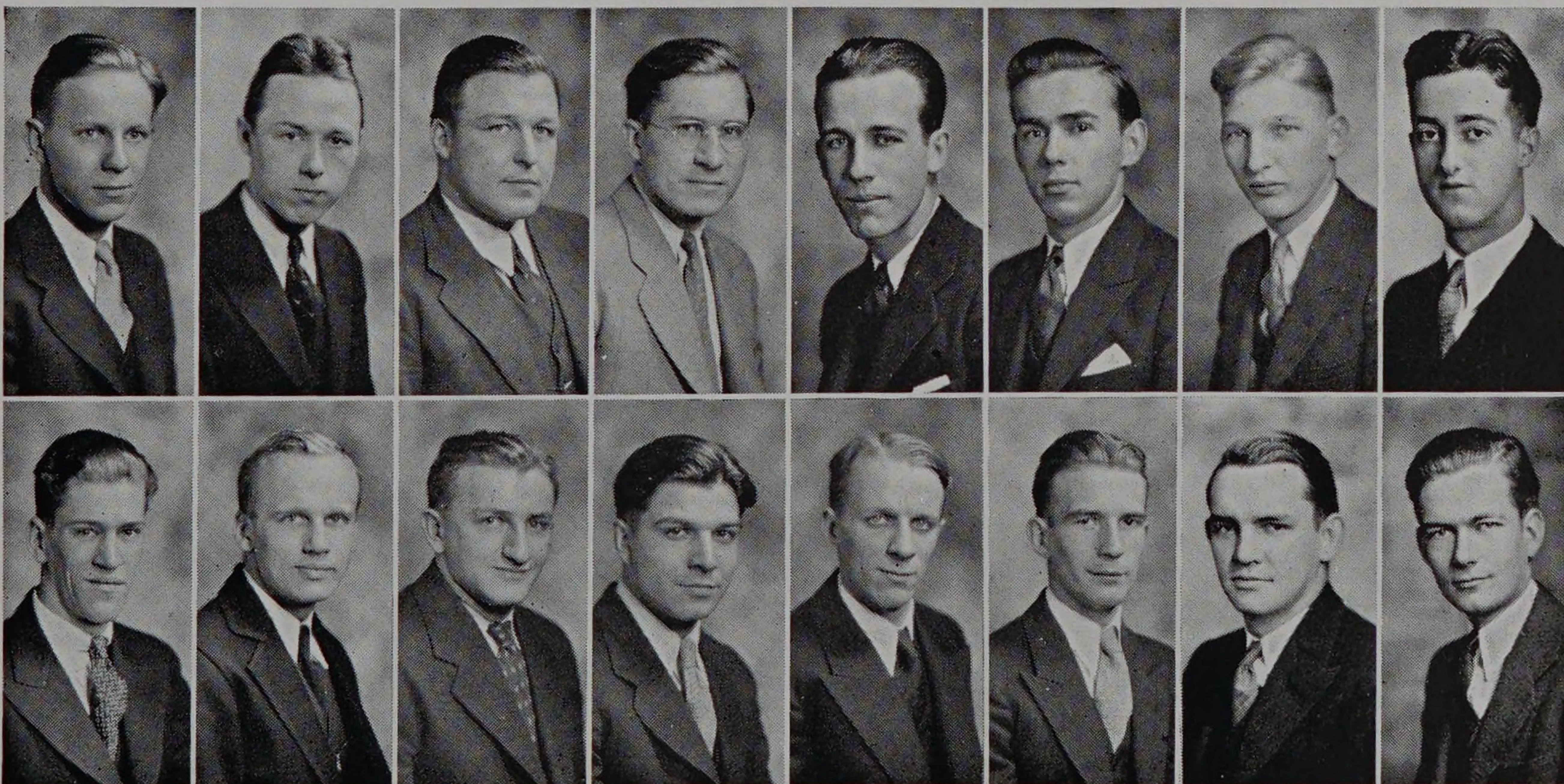
Leonard Marcus
 George A. Nelson
 Raymond J. Pflum
 Otto J. Schmidt
 Kenneth O. Stocking
 John E. Schreiner
 Carl J. Shermer
 Eric H. Smith

CHARTER MEMBERS

Richard B. Barry
 Mack Burkey
 C. Wendell Carlson
 Eugene F. DeBra
 Fred G. Frederick
 Charles S. Frink
 George Goedhart
 Frederick Hess

Robert S. Mayo
 Harold W. Munday
 F. Raymond Nelle
 Alfred E. Phillips
 Edward W. Prentiss
 Lloyd R. Quayle
 Oremas G. Smith
 John H. Sweeney

Election to membership is based on the four requisites of a successful engineer; scholarship, character, practicability, and sociability. A candidate must have an average grade in scholarship in the upper one-third and must be a student in regular standing in the Civil Engineering Department in the junior or senior class.



Schreiner, Korink, Ketler, Hoffman, Pflum, Colburn, Fleissner, Kuehn
 Nelson, Shermer, Marcus, Schmidt, Laestadius, Smith, Stocking, Davidson