

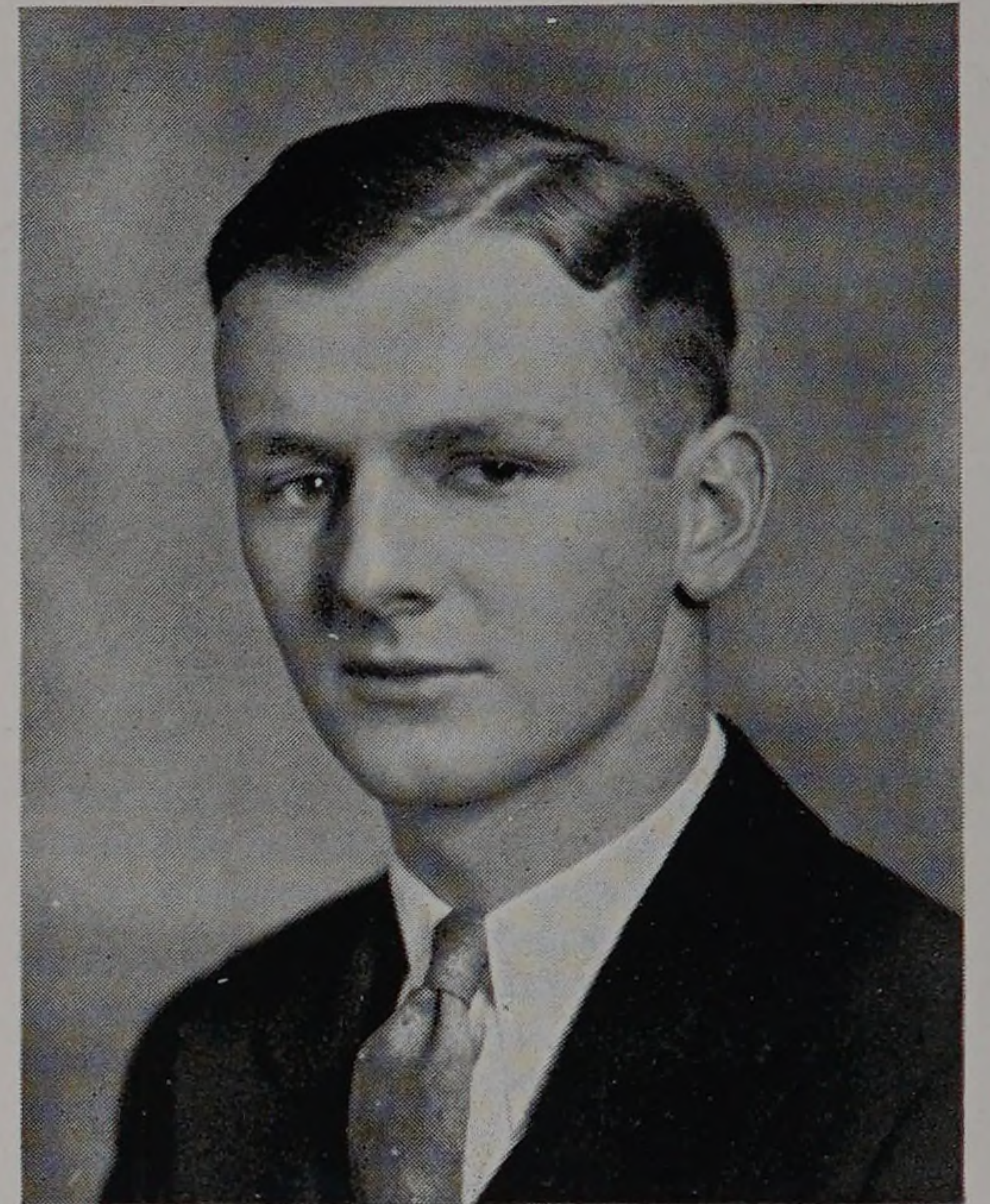
THE AMERICAN SOCIETY OF

The Armour Student Branch of the American Society of Mechanical Engineers has completed its second year operating under the new plan for student branches. The object of this plan, presented by the national society, is to foster a more intimate relationship between the student branch and the parent society.

The annual dues under this plan are considerably higher than formerly but there are also many more privileges. These include a membership card and pin, a subscription to the Society's monthly magazine, a reduction in the regular initiation fees, and participation in the annual student convention. The effect of the increased dues was to decrease the number of members actually in the student branch. However, more than half of the junior and senior mechanicals are now active members and all the mechanical engineering students are invited and urged to participate in all the activities of the society. So the Armour branch still operates in the interest of the whole mechanical department.

Meetings were held regularly every two weeks throughout the year. The programs were varied, interesting and instructive. The first meeting was a business session where the new plan was thoroughly discussed and finally enthusiastically approved.

The following meetings had one of these three attrac-



Robert W. Suman

ROBERT W. SUMAN
President

IRVING A. KOLVE
Secretary

JOHN B. LUKEY
Treasurer



Johnson, McDonald, Thomas, Brenner, Svoboda, Manly, May, Beckman, Maci, Lukey, Klima, Traver
Schneebalg, Hanes, Skach, Dahlgren, Bradac, Meyer, Mayerowicz, Polko, Wood, W. Hoyer, Wojtasik, Egloff
Henning, Ferrara, Huster, Ronowski, Fotter, McDonough, DeBoo, Stahl, Kreuzkamp, Shimkaitis, Hoffman
Hillman, Masure, Pinkus, Peebles, Nachman, Gebhardt, Libby, Roesch, Lebus, Kolve, Suman

One Hundred Forty-four