

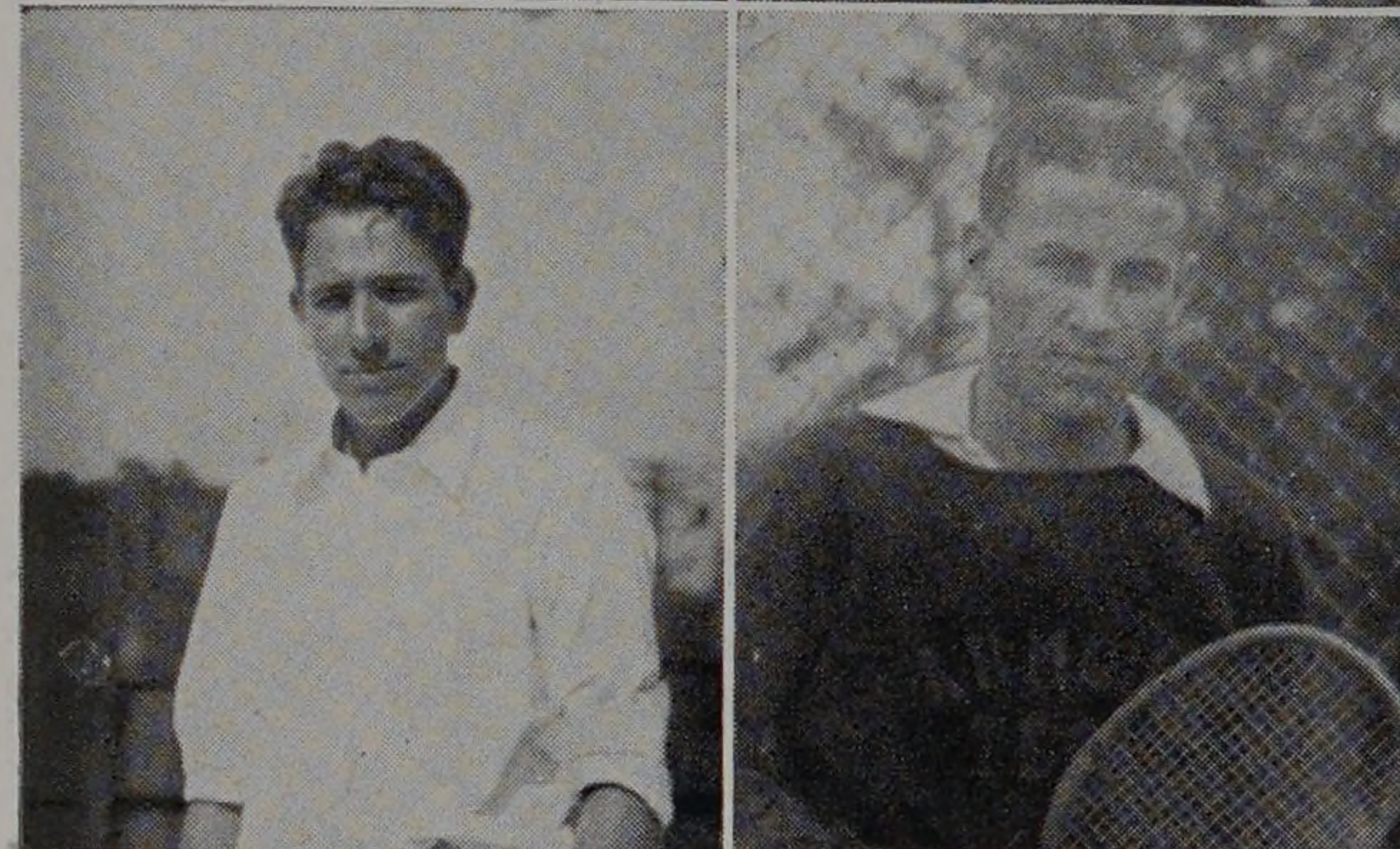
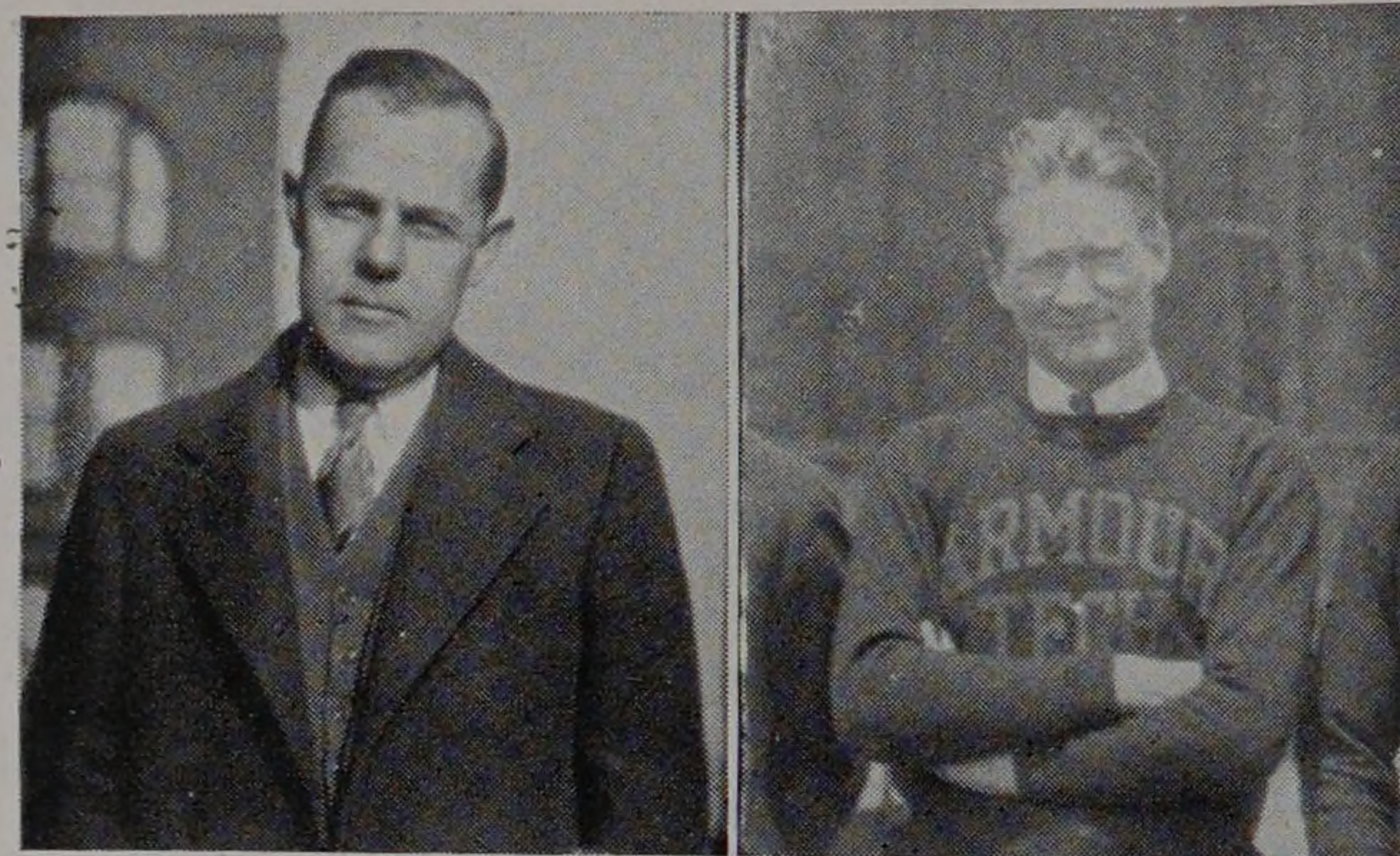
TENNIS, 1933

Coach.....William W. Colvert
 Captain.....Louis H. Streb
 Manager.....Jack R. Peckman

Under the able and popular leadership of Coach W. W. Colvert the Techhawk Tennis Team experienced a success that was consistent with other sports at Armour. The squad consisted of the following men, listed according to their ranking; Streb, Armsbury, Paine, McDonough, and Cone. This was the second consecutive year that these five men played together and they showed increased skill in their performances. Because of the absence of vacancies there were several able men that failed to be listed on the first team but who were substituted occasionally with fine showings. They were Schmidt, Esbensen, Lammers, Davidson, and Curran.

Tech started the season badly by losing to Northwestern by a score of 6 to 3 on April 24th. Cone and Esbensen were victorious in the singles while Lammers and Cone won their match in the doubles.

Armour recuperated by defeating Loyola on April 27th, to the tune of 7 to 2. Armsbury, Cone, Lammers, and McDonough won the singles matches and all the doubles were won by Armour. The doubles teams consisted of Armsbury and Streb, Cone and Lammers, and McDonough and



COACH W. W. COLVERT

FRANKLIN W. PAINE

Professor Colvert's fourth season as coach of the tennis team again was a success. He has helped make the team one of the most successful of all the teams at Armour.

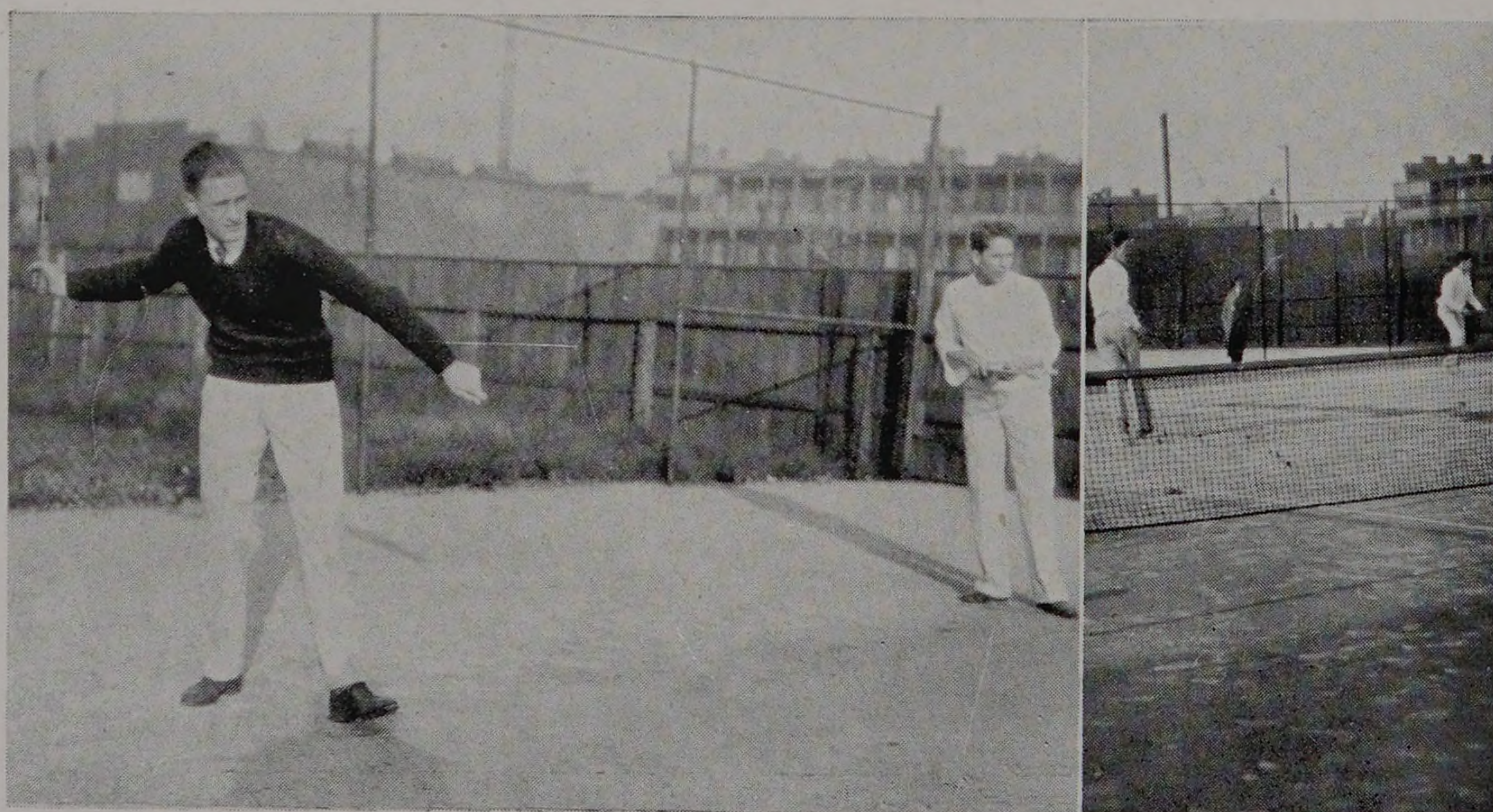
Paine did not have quite as good a year as was expected because of a bad ankle. He was hampered by lack of practice and could not be expected to do his best work under these conditions.

LOUIS H. STREB

Captain Louis Streb was again the Number 1 man of the team and as such had to meet the leaders of the opposition. He won nearly all of his matches, and teamed with Armsbury to form a very effective doubles team.

RICHARD D. ARMSBURY

Dick played his second year as Number 2 singles man and was even more brilliant than he was as a freshman. He is probably even a better doubles player than a singles player.



*Paine and
 Streb In
 Action*

*Cone and
 McDonough
 Play Doubles*