

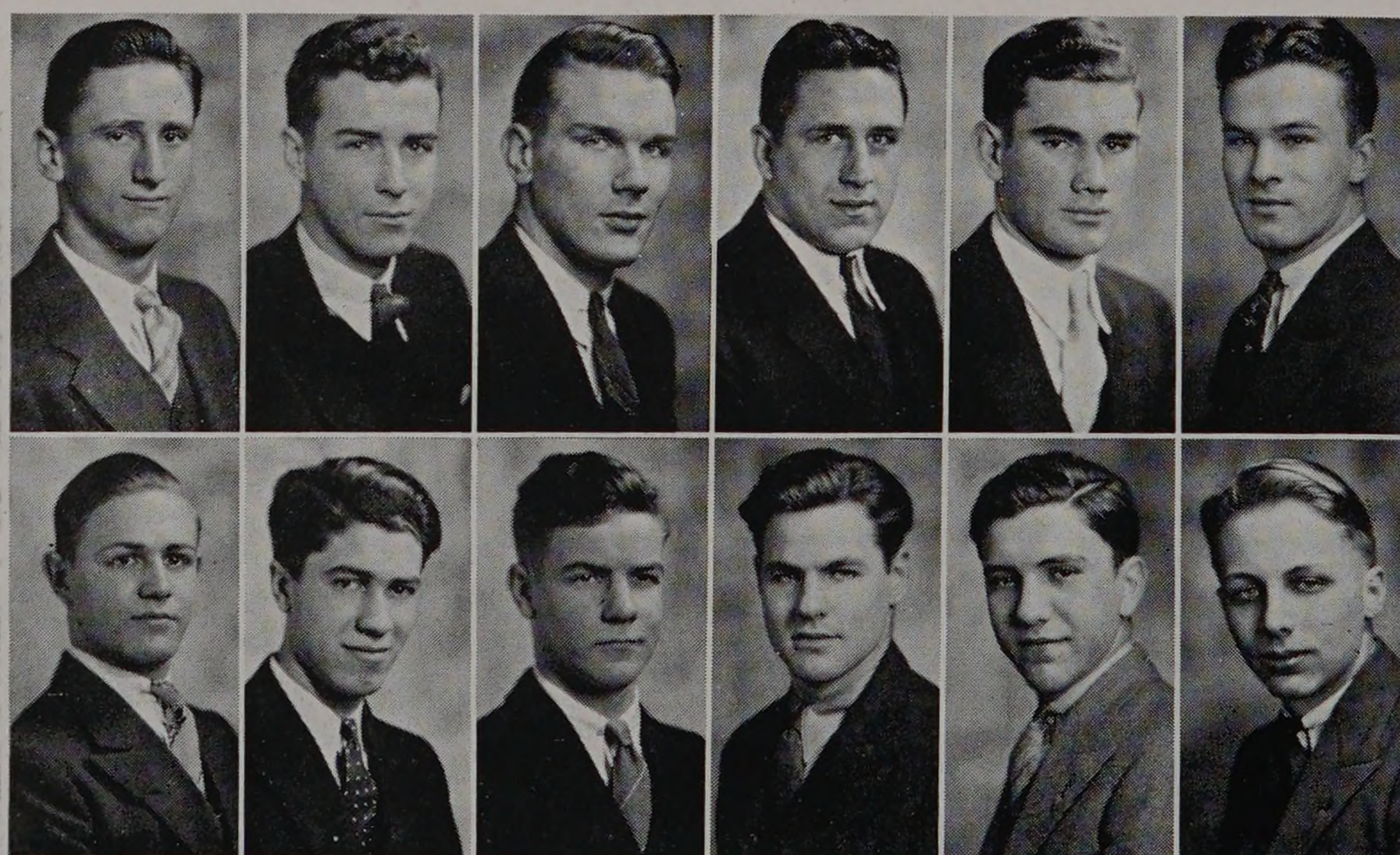
FRESHMAN-SOPHOMORE INFORMAL 1933-1934

The elaborately decorated Oriental Room of the Hotel Knickerbocker was the destination of guests of the Freshman and Sophomore Classes on the evening of April 27, 1934. The gayly illuminated glass floor witnessed another joint dance of the two groups. One of the largest crowds of the 1933-34 social season attended and made of the affair a really gay event. Murrey Hughes, sophomore social chairman, and Paul Reh, of the freshman section, spared no efforts in attempting to make a successful showing for the two classes.

In keeping with modern methods of advertising and the heralding of important events, a bid and program contest was conducted preceding the date of the dance. Numerous designs for the bid to be used and its accompanying program were submitted to the judges by the many contestants. Awards were made on the basis of appearance, origin-

ality, and practicability. The beneficial effects of such a contest may be judged by considering the large number of both upper and underclassmen who turned out for the social get-together. In the past, the two classes have been able to draw large crowds to their affairs and the occasion of this dance was no exception to the rule.

The spaciousness of the floor and convenience of the lounges further enhanced the value of the Hotel Knickerbocker for the evening. Coming as it does towards the end of the second semester of the school year, the Frosh-Soph Frolic may be thought of as a farewell social party of the first and second year men. This fact is sufficient to warrant the amount of significance attached to the dance by the joint hosts. At any rate, all will agree that the entertainment provided on April 27 was of an exceedingly fine quality.



SOPHOMORE COMMITTEE

I. Murray Hughes
Chairman

Donald C. Graham
Robert R. Paulsen
Charles R. Ford
Raymond A. Peterson
William H. Fogle

FRESHMAN COMMITTEE

Paul A. Reh
Chairman

David E. Forberg
Frank Hackman
Richard P. Thunder
Edwin E. Skeppstrom
Donald C. Suhr
Oresto Tomei
Samuel S. Taradash

Paulsen, Fogle, Ford, Peterson, Graham, Hughes
Reh, Tomei, Hackman, Thunder, Taradash, Skeppstrom