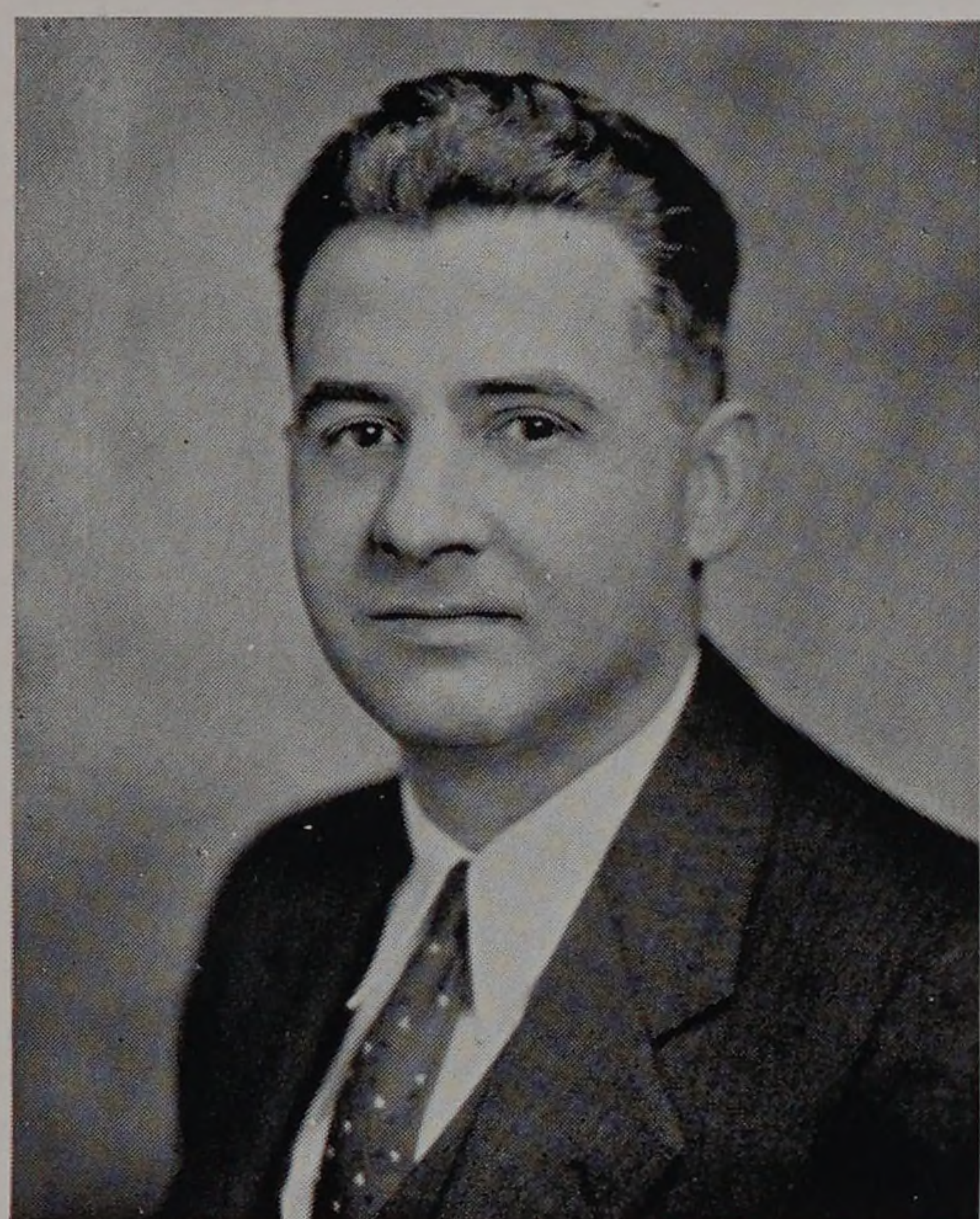


DEPARTMENT OF SOCIAL SCIENCE



Carman G. Blough

That many prominent engineers and industrial leaders in the community have seen recent engineering graduates handicapped by a lack of familiarity with other than strictly engineering subjects was clearly indicated in the study carried on by the Trustees of Armour Institute of Technology two years ago. It was a major recommendation of the program resulting from this study, therefore, that the curricula at Armour be extended to include a broader range of extra-engineering subjects. The department of Social Sciences was organized accordingly to supply instruction in subjects dealing with current policy and practice in business and social institutions.

At the close of its first year as a required unit in the curriculum, this new department has gained wide support among the students,

members of the faculty, and alumni who have remained in close touch with its operation during the year. Courses offered by the department this year were "Business and Engineering Problems" for freshmen, and "Business Policy" and "Public Policy" for seniors.

Breaking away from the conventional study in economic theory which is given at most engineering colleges and which has been required here in past years, these new courses get down to cases. Students were required to work out some of the actual practical problems of financing, production, and management which the engineer must face in any enterprise. They were required to investigate at first hand such social problems as municipal courts, slum clearance, blight areas, and city ordinances relating closely to engineering projects, for the purpose of studying the day-to-day operation of organizations having a controlling influence in the engineering professions.

This direct approach found immediate acceptance among the students and contributed greatly to the success of the courses, which were organized specifically to meet the needs of Armour students, and are not duplicated at any other college of engineering in the country. Professor Carman G. Blough is in charge of the department. He was assisted in its organization and direction throughout the year by Professors H. P. Dutton, A. M. Hillhouse, and W. B. Lockling.