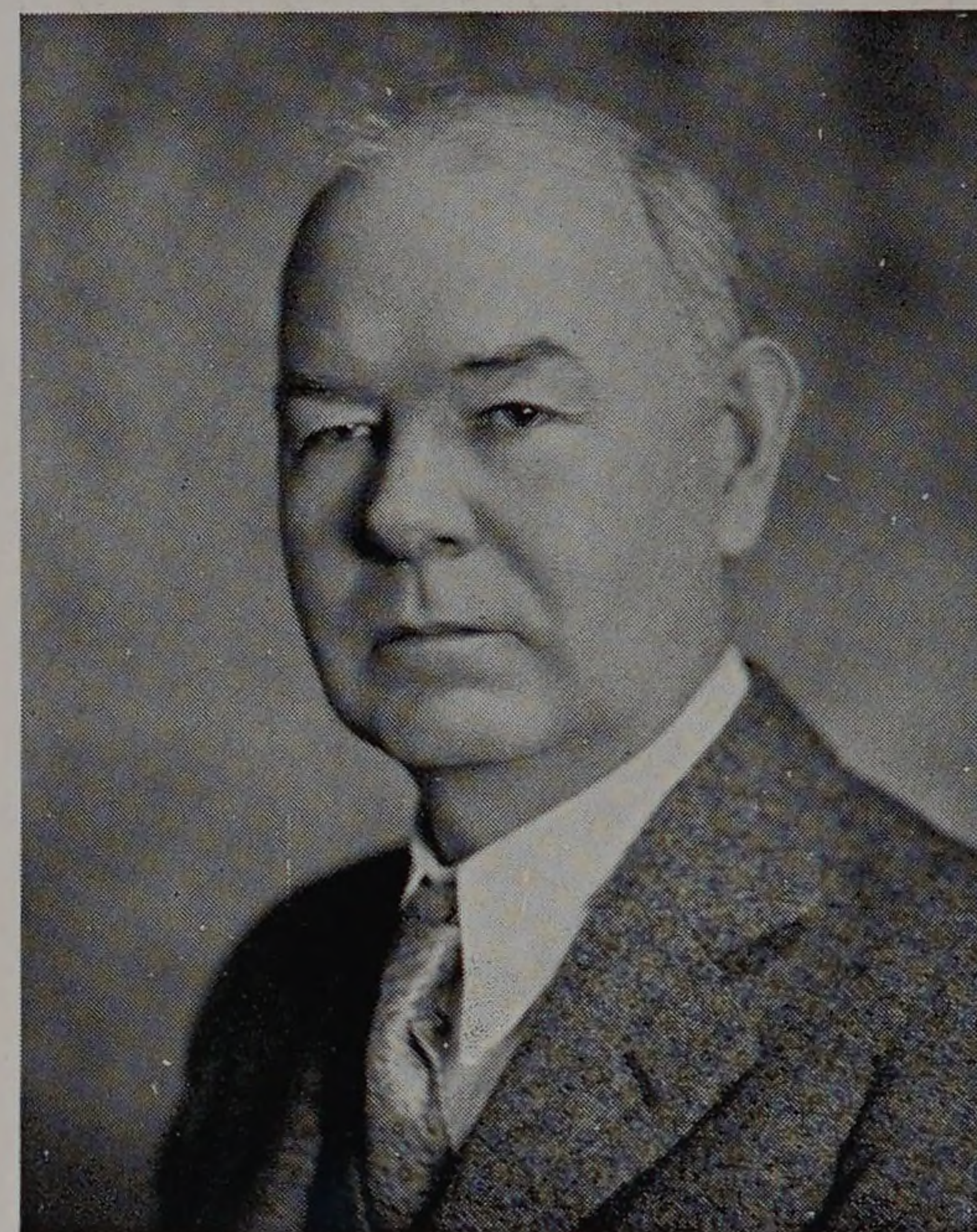


DEPARTMENT OF CHEMICAL ENGINEERING

The enrollment in the department of chemical engineering continues to increase, undoubtedly reflecting the position that the chemical industries find themselves in in the present economic picture. Graduate study, inaugurated last year, is being continued.

Considerable readjustment in the schedule of the department has become necessary because of the decision by the Institute to have a single curriculum for all first year students, and because of the further decision to transfer the laboratory course in physics from the third to the second year. First year students in this department previously received a separate course in chemistry. The new course is a general one which, in particular, places emphasis on the quantitative method of approach in the laboratory phase of instruction. The summer course, which students in this department previously have been required to take after the second year, is now scheduled to follow the first year. The introduction of physics laboratory into the second year necessitated the displacement of one of the chemistry courses from that year. Since quantitative analysis is necessary to develop the manual proficiency upon which subsequent laboratory instruction is based, and since this subject can be taught in concentrated form very satisfactorily, it was decided to transfer this subject into the summer. And in order not to require two summer courses and yet not drop the course in special methods of analysis, the two courses were combined into one of nine weeks' length.

Due to the general recognition of the fun-



Harry McCormack

damental importance of physical chemistry for all phases of chemical activity, the length of the laboratory course in this subject has been increased from one three-hour period for one semester to one such period for each of two semesters. The emphasis placed on this subject is now consistent with standard practice in this field. All of these subjects in pure chemistry lead naturally to the courses in chemical engineering which are the ultimate objective in this department.

The period of retrenchment has not yet expired, unfortunately. Yet some additions to the equipment and some modifications of the housing for the department have been necessitated by the increased enrollment. The metallurgy laboratory and the laboratory of physical chemistry have been progressively developed in accord with previously approved plans.