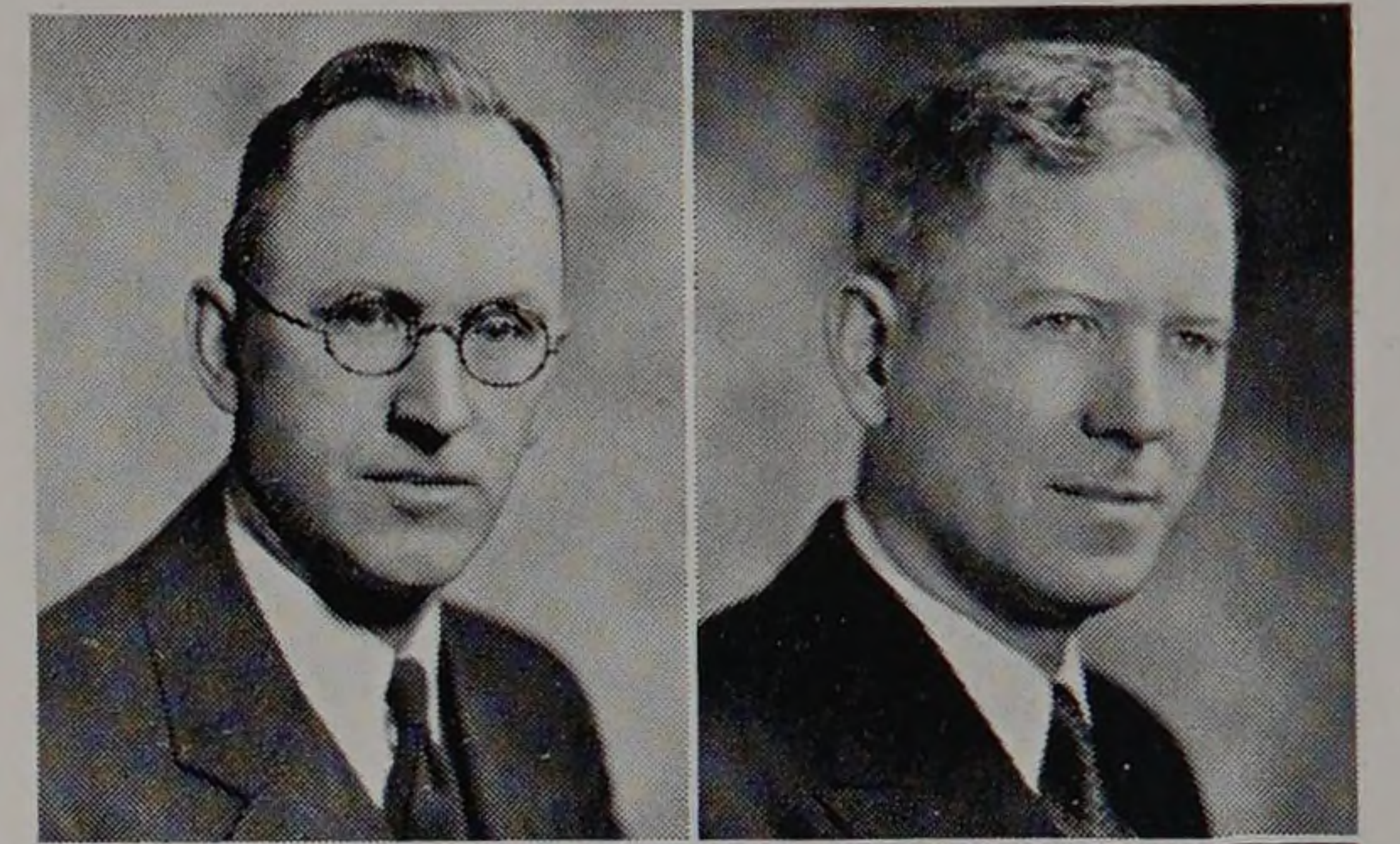


Charles Anson Nash  
 B.S. University of Illinois  
 Associate Professor of Electrical Engineering  
 Sigma Xi

B.S.

Donald Elmer Richardson  
 B.S. and E.E. Armour Institute of Technology  
 M.S. University of Chicago  
 Associate Professor of Electrical Engineering  
 Sigma Xi, Tau Beta Pi, Eta Kappa Nu

M.S.



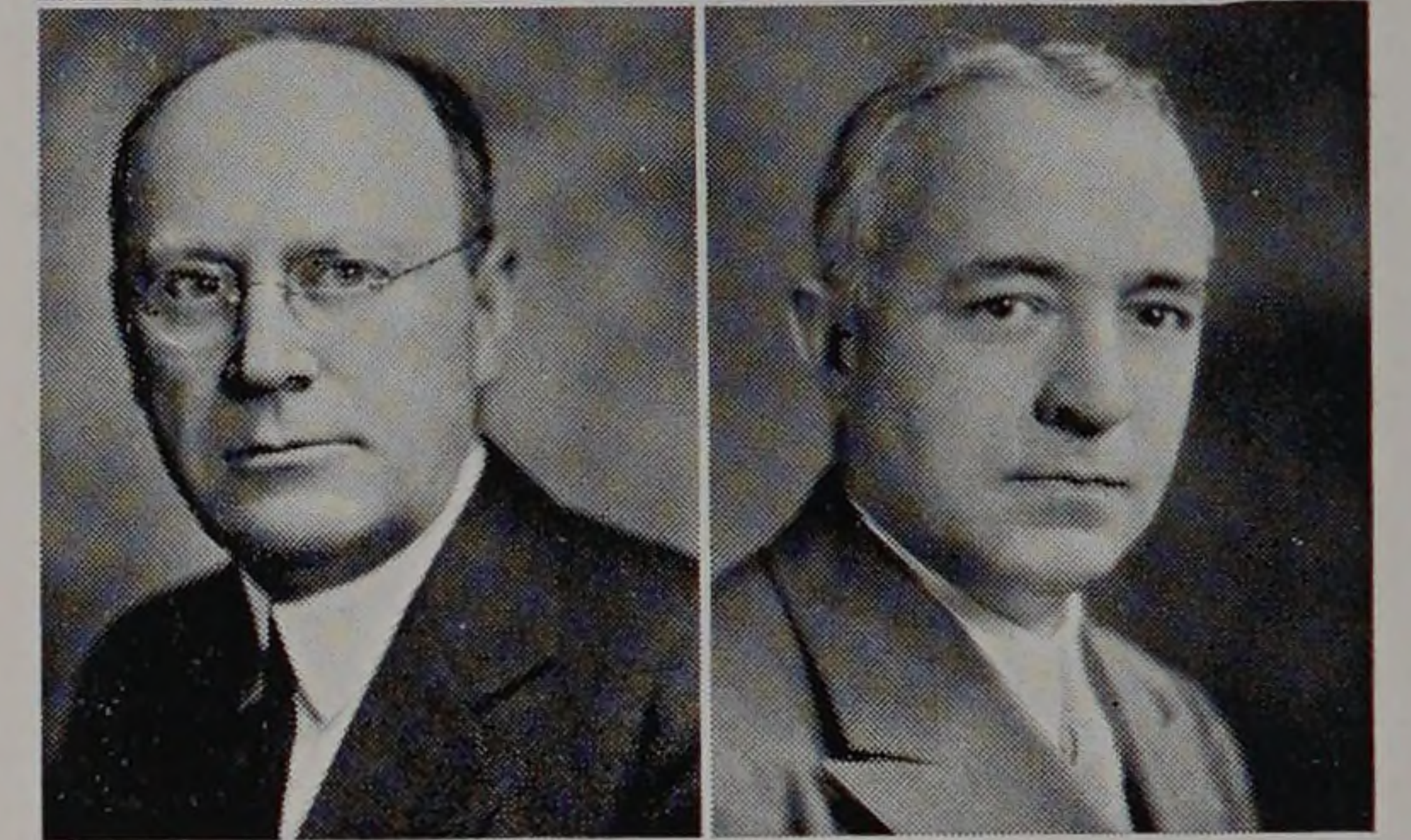
DEPARTMENT OF FIRE PROTECTION  
 ENGINEERING

Joseph Bernard Finnegan  
 S.B. Massachusetts Institute of Technology  
 Professor of Fire Protection Engineering and Head of the  
 Department  
 Tau Beta Pi, Salamander, Sphinx

S.B.

Otto Louis Robinson  
 B.S. Purdue University  
 Associate Professor of Fire Protection Engineering  
 Salamander, Acacia

B.S.



Nash  
 Finnegan

Richardson  
 Robinson

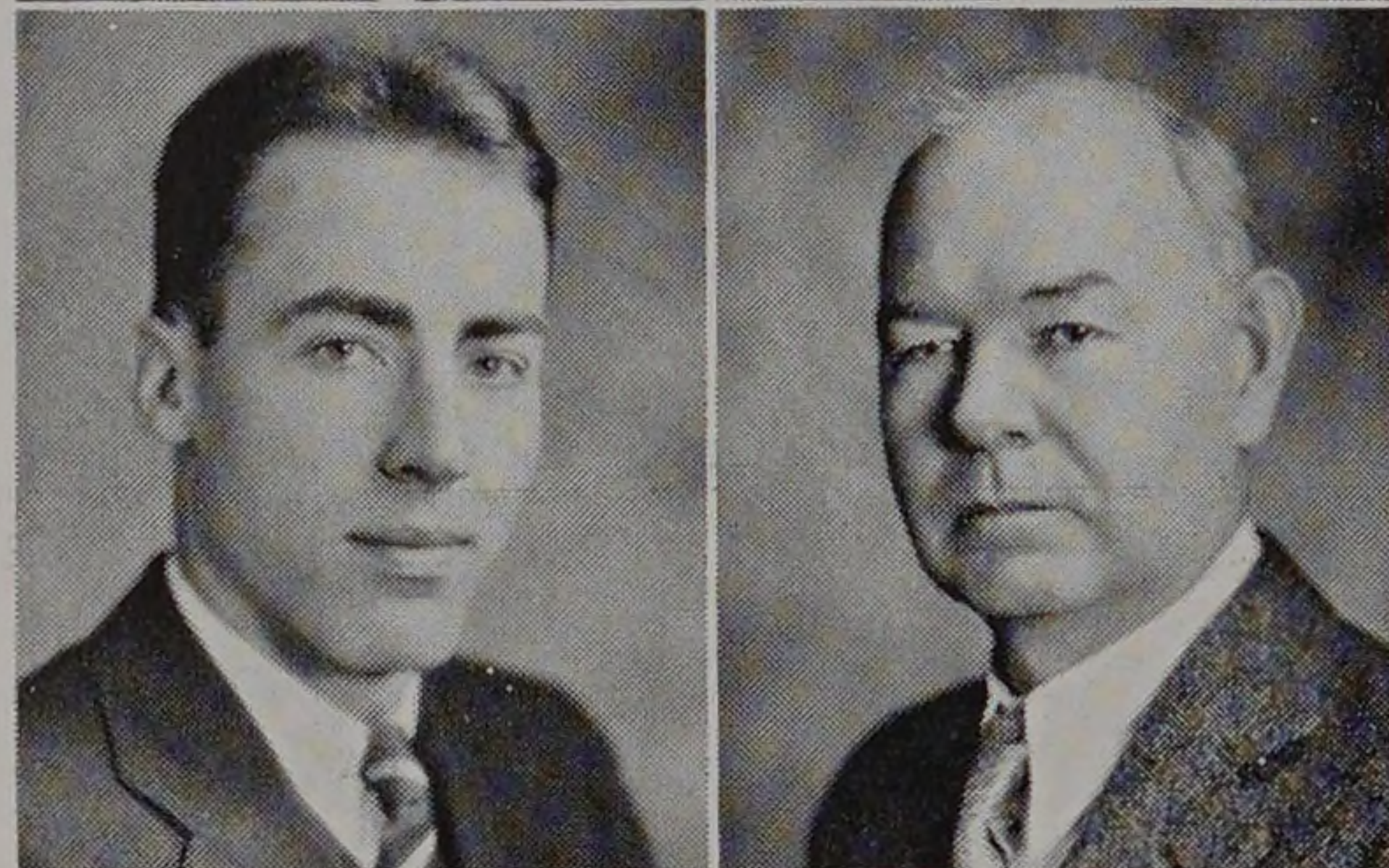


Charles Page Holmes  
 S.B. Massachusetts Institute of Technology  
 Assistant Professor of Fire Insurance  
 Salamander, Alpha Chi Epsilon

S.B.

Harold Leighton Norway  
 B.S. Case School of Applied Science  
 Instructor in Fire Protection Engineering

B.S.



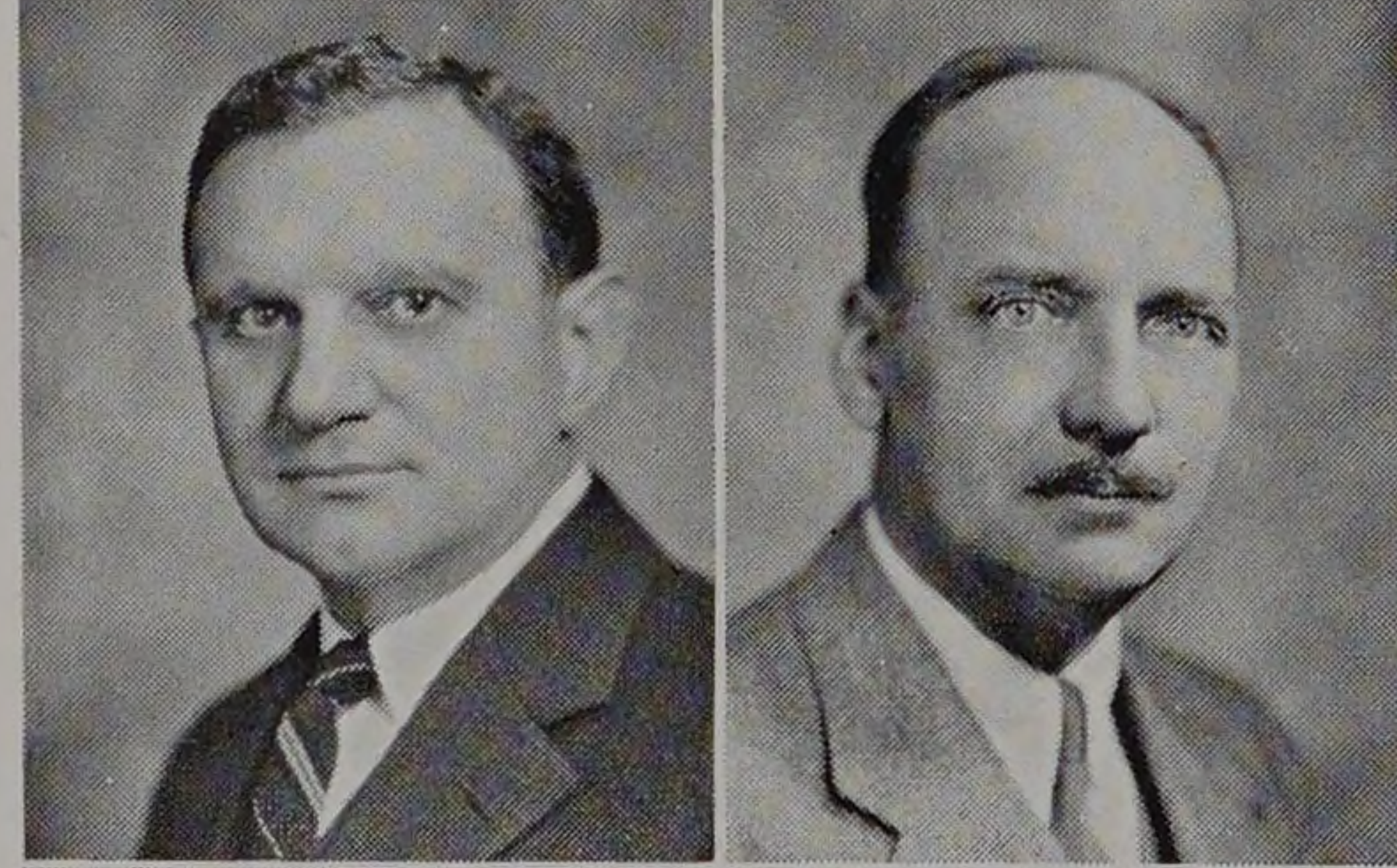
Kent Hamilton Parker  
 B.S. and F.P.E. Armour Institute of Technology  
 Assistant Professor of Fire Insurance  
 Tau Beta Pi, Salamander, Sphinx, Pi Nu Epsilon, Theta Xi

F.P.E.

DEPARTMENT OF CHEMICAL ENGINEERING

Harry McCormack  
 B.S. Drake University  
 M.S. University of Illinois  
 Professor of Chemical Engineering and Head of the Department  
 Tau Beta Pi, Phi Lambda Upsilon, Phi Beta Kappa

B.S., M.S.



Benjamin Ball Freud  
 Sc.B. and Ph.D. University of Chicago  
 Ch.E. Armour Institute of Technology  
 Professor of Organic Chemistry  
 Phi Beta Kappa, Sigma Xi

Ph.D.

Charles Austin Tibbals  
 B.A., M.A., and Ph.D. University of Wisconsin  
 Professor of Analytical Chemistry  
 Phi Lambda Upsilon, Sigma Xi, Honorary Member of Alpha  
 Sigma, Phi Gamma Delta, Honorary Member of Triangle

Ph.D.



Eugene Edward Gill  
 Ph.B. and M. Dickinson College  
 Ph.D. John Hopkins University  
 Associate Professor of General Chemistry  
 Phi Beta Kappa

Ph.D.

Arthur Howe Carpenter  
 A.M. Ohio University  
 Associate Professor of Metallurgy  
 Phi Lambda Upsilon, Delta Tau Delta

A.M.

Holmes  
 Parker  
 Freud  
 Gill

Norway  
 McCormack  
 Tibbals  
 Carpenter