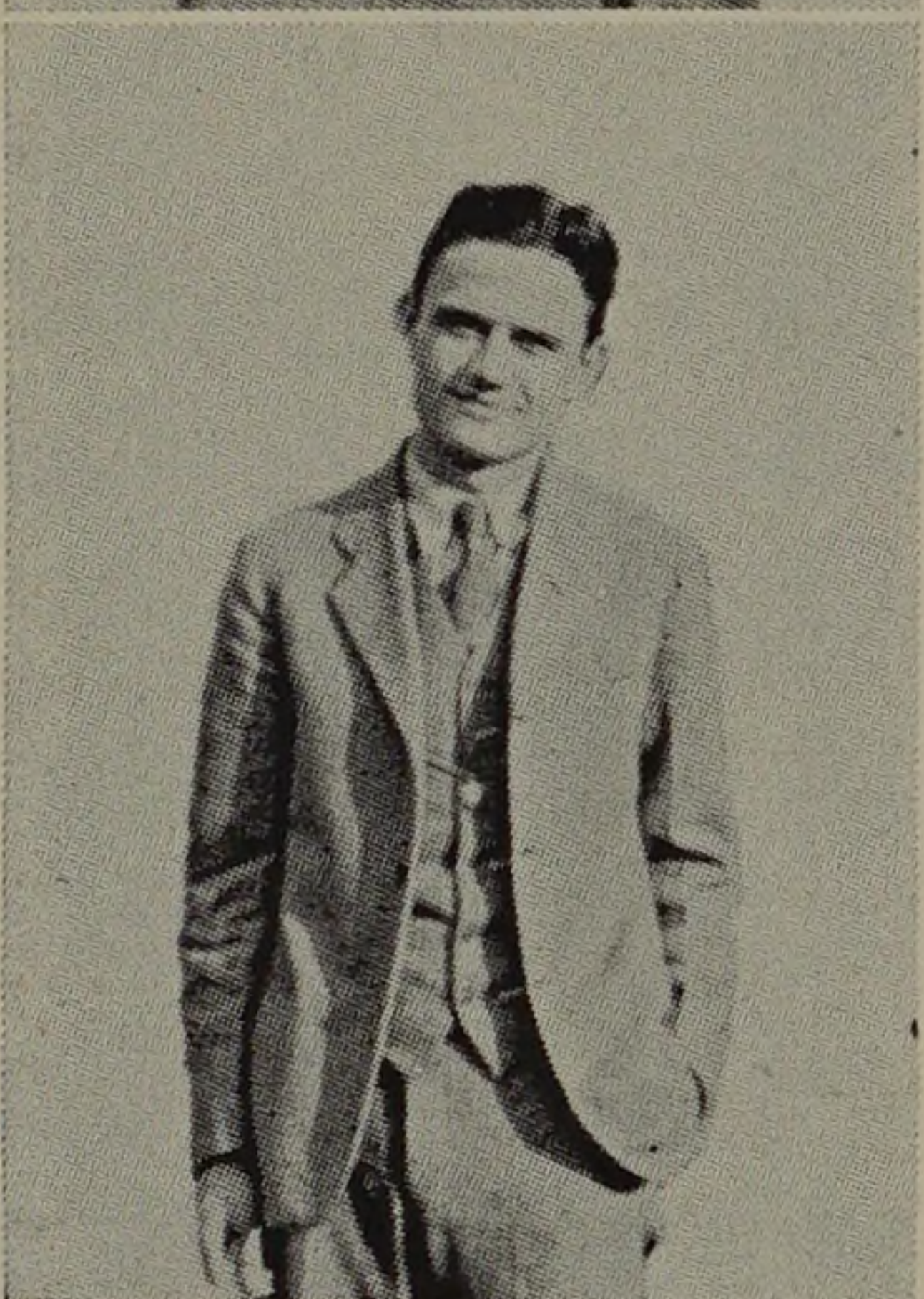
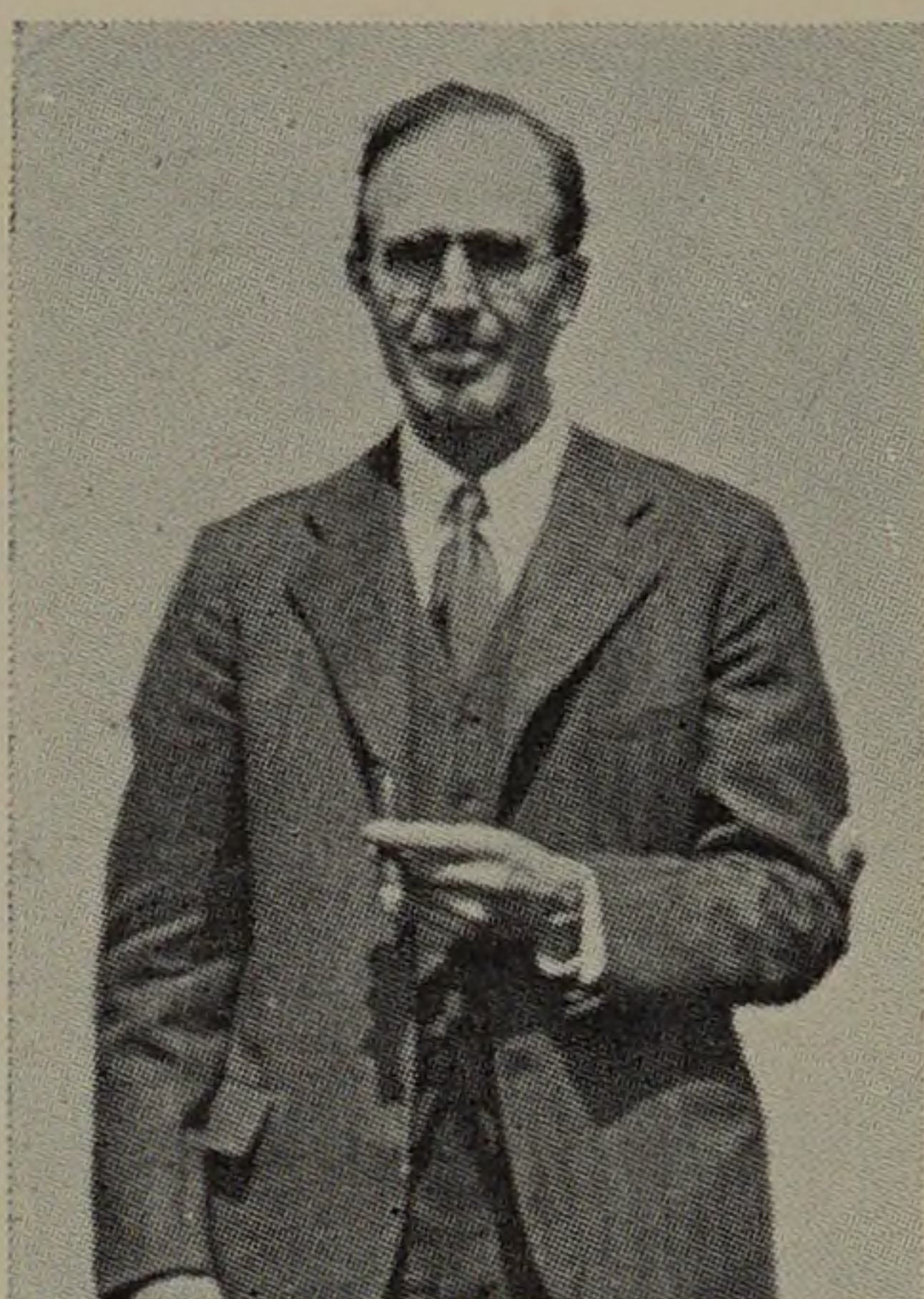


## GOLF, 1932



CHARLES W. LEIGH

Professor Leigh coached the golf team to one of the most successful seasons in recent years. The team went through a tough schedule, winning five out of the scheduled eight meets.

DAVID W. PEARSON

Captain Pearson led the golf team through an excellent season. His fine consistent play was an important factor in all Tech's victories.

WALTER M. TRAUTEN

Manager Trauten scheduled strong opposition for the men of Leigh. The excellent cooperation offered to the coach and team earned for him the high esteem of his teammates.

Old Man Depression and his accompanying gloom forgot to call on the Tech golfers in 1932 as the men of Leigh were victorious in five out of eight matches. The squad was composed of Captain Pearson, Johannisson, Weldon, Richards, and Davidson.

After the customary school tournament on April 9, the squad opened its season on April 16 by trimming the Alumni, 13½ to 4½, at Evergreen Park. Defeat to the tune of 16½ to 1½ was the present received on April 22 at Valparaiso.

Getting her siege guns in battlefront array for the first time Tech fairly annihilated the Crane Tiger, 15 to 3, when the supposedly ferocious animal visited Evergreen Park on April 27. On May 5 Loyola trounced Tech, 10½ to 7½, at Evergreen Park, but the Engineers got back into winning stride again on May 13 by giving the visiting Toledo aggregation the works, 11 to 7.

Vengeance was wreaked on Valparaiso at Evergreen on May 18 by trouncing the Hoosiers 10 to 8. Tech completed her season by drubbing Crane, 9 to 3, at Wheaton on May 20 and losing to Toledo on May 28, 16½ to 1½, in the Ohio metropolis.

The star of the team turned out to be Davidson although he was pushed closely for top honors by Captain-elect Sven Johannisson. Captain Pearson was the high point man for the squad in performing in the same cool and leisurely style that is characteristic of his game. Weldon also proved to be a valuable mem-



Trauten, Davidson, Pearson, Leigh, Johannisson, Weldon