

W. W. Colvert Coach
 G. W. Schodde Manager
 (No captain was elected)

The team lost its second match to Wheaton by the same score, 4 to 3. Wheaton College was the only team to defeat Armour twice during the season. The season closed with a 7 to 0 duplicate administered to Ripon College.

Prospects for the 1933 season are excellent as every member on the squad returned. A tournament held in the fall brought out new men of excellent ability who threaten to push the veterans for team positions.

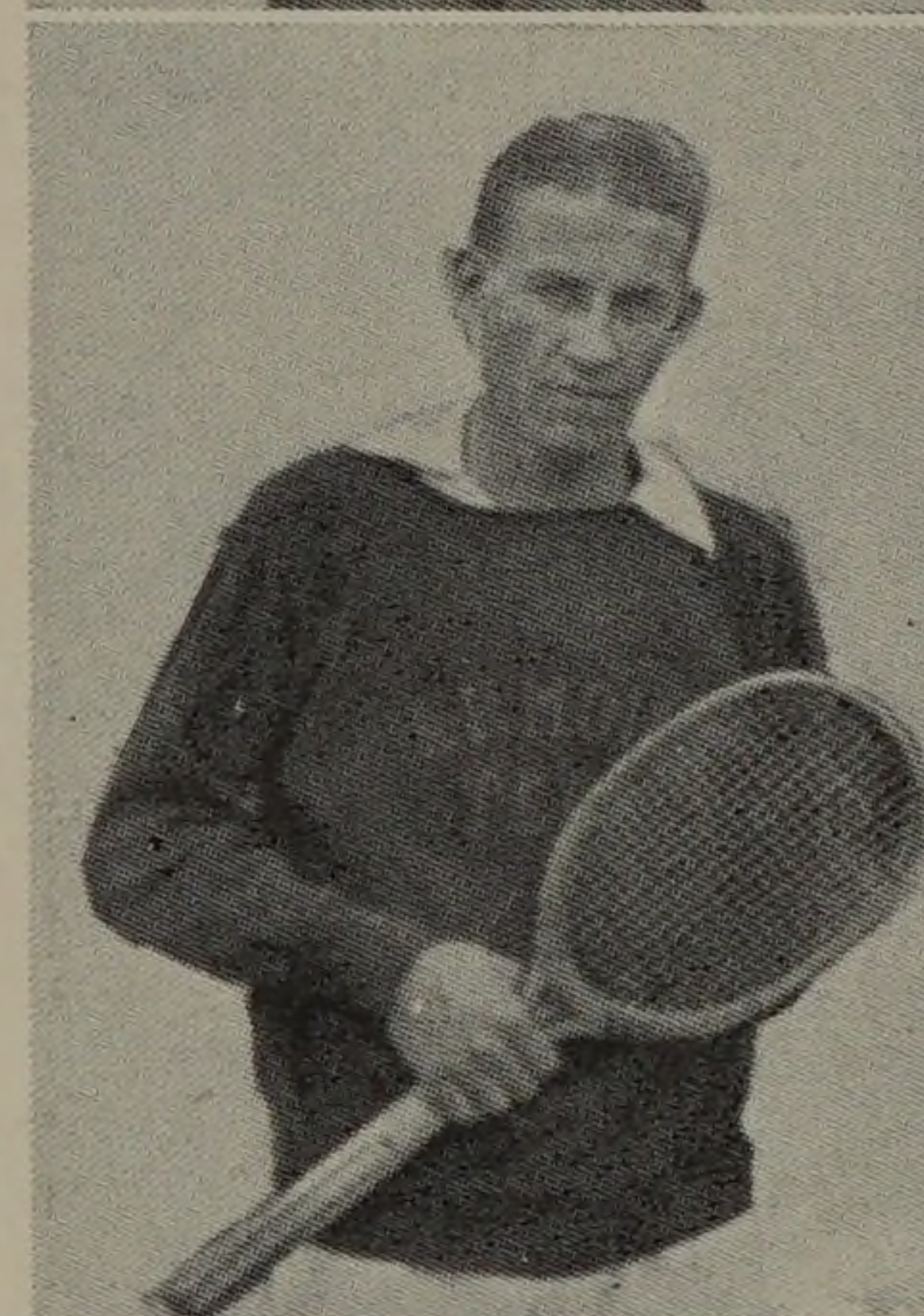
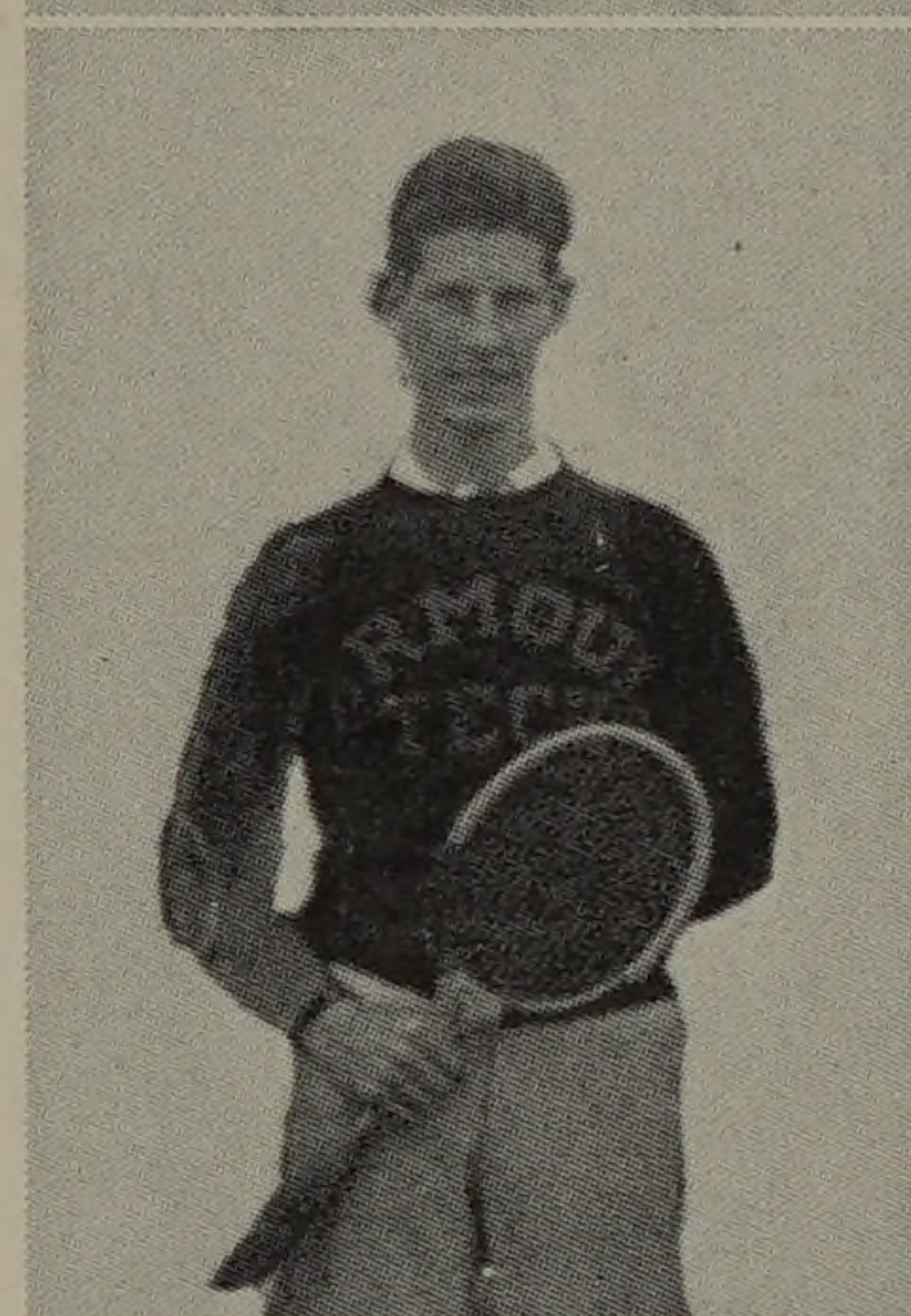
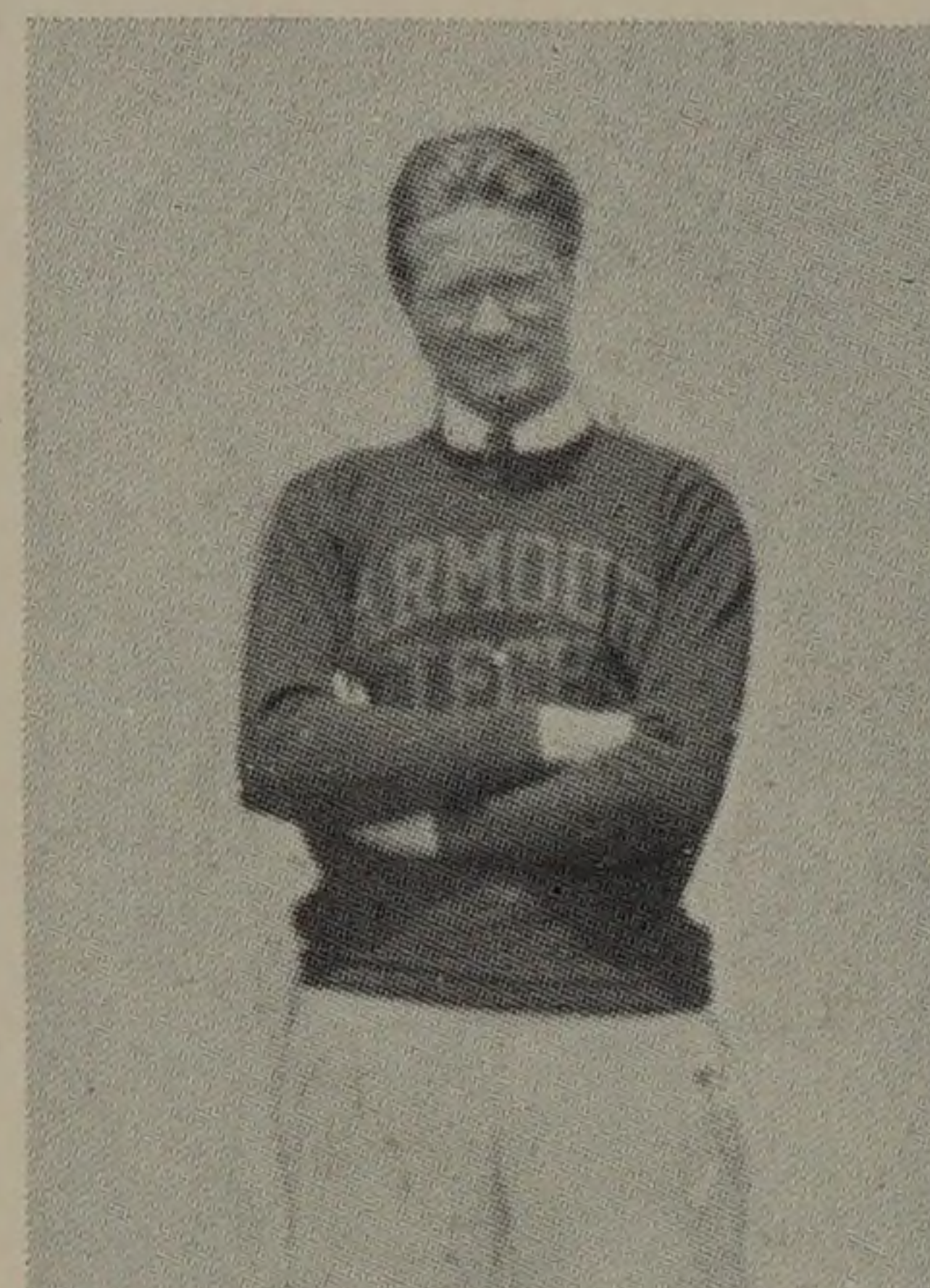
TENNIS SCHEDULE, 1932

April 29—Armour 3, Loyola 4, at Loyola
 May 2—Armour 4, Loyola 3, at Armour
 May 14—Armour 1, Notre Dame 6, at Armour
 May 16—Armour 3, Wheaton 4, at Armour
 May 19—Armour 5, Lake Forest 2, at Lake Forest
 May 24—Armour 7, Lake Forest 0, at Armour
 May 28—Armour 7, Ripon 0, at Ripon
 May 31—Armour 3, Wheaton 4, at Armour
 June 1—Armour 7, Ripon 0, at Armour

SUMMARY

Matches Won—5

Matches Lost—5



FRANKLIN W. PAINE

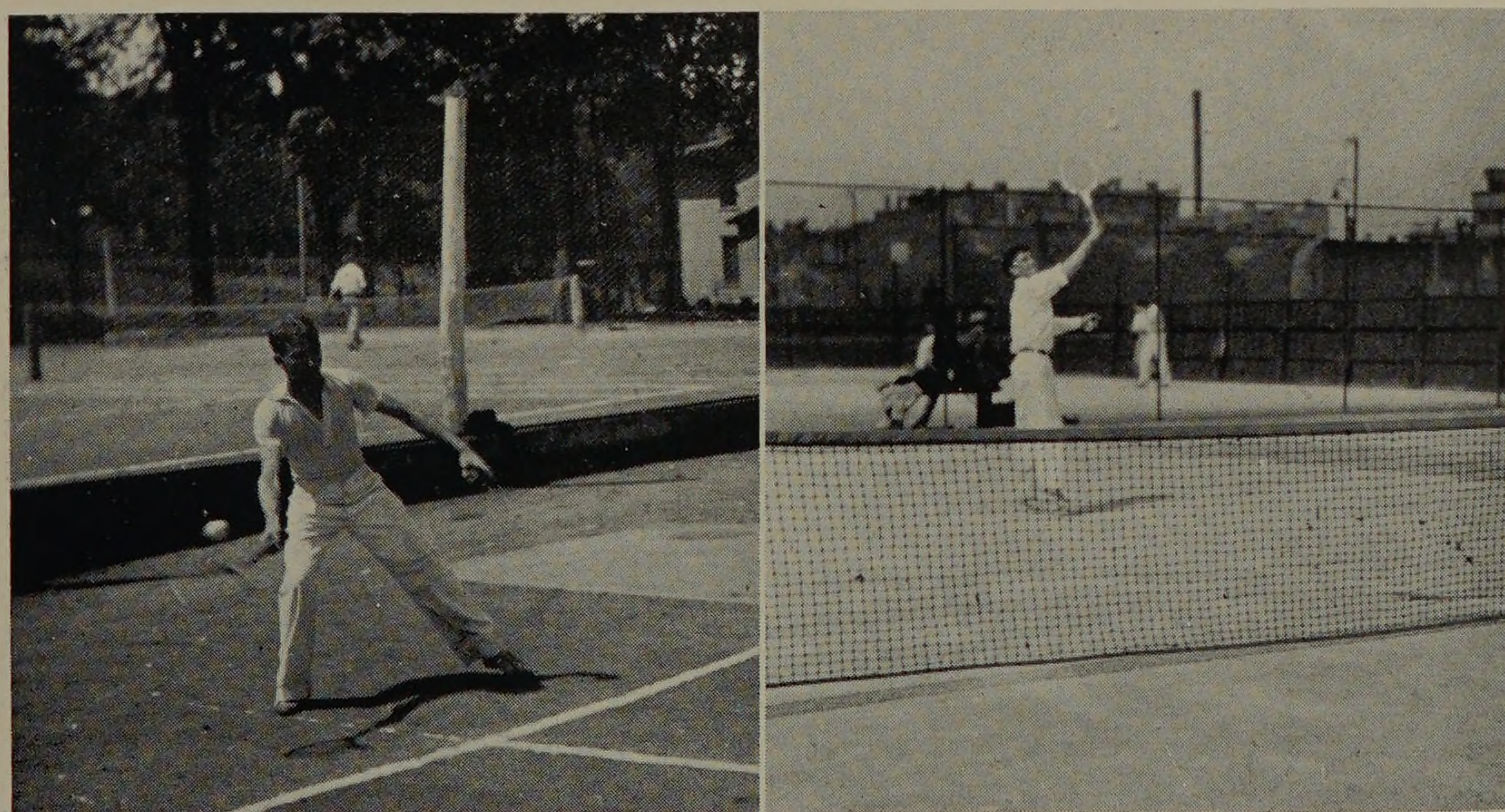
Although handicapped by a bad ankle most of the season, Paine won four singles victories to four defeats. He saved Tech from a shut-out when he turned in Armour's lone victory against Notre Dame.

SPENCER B. CONE

"Spence" Cone supplied many of the victories that made a Tech win possible. His fine tennis and his excellent personality combined to make him one of the most popular men on the team.

RICHARD D. ARMSBURY

Although a first year man Dick rapidly rose to number two position. His season's record was six wins to three losses.



Action on the courts