

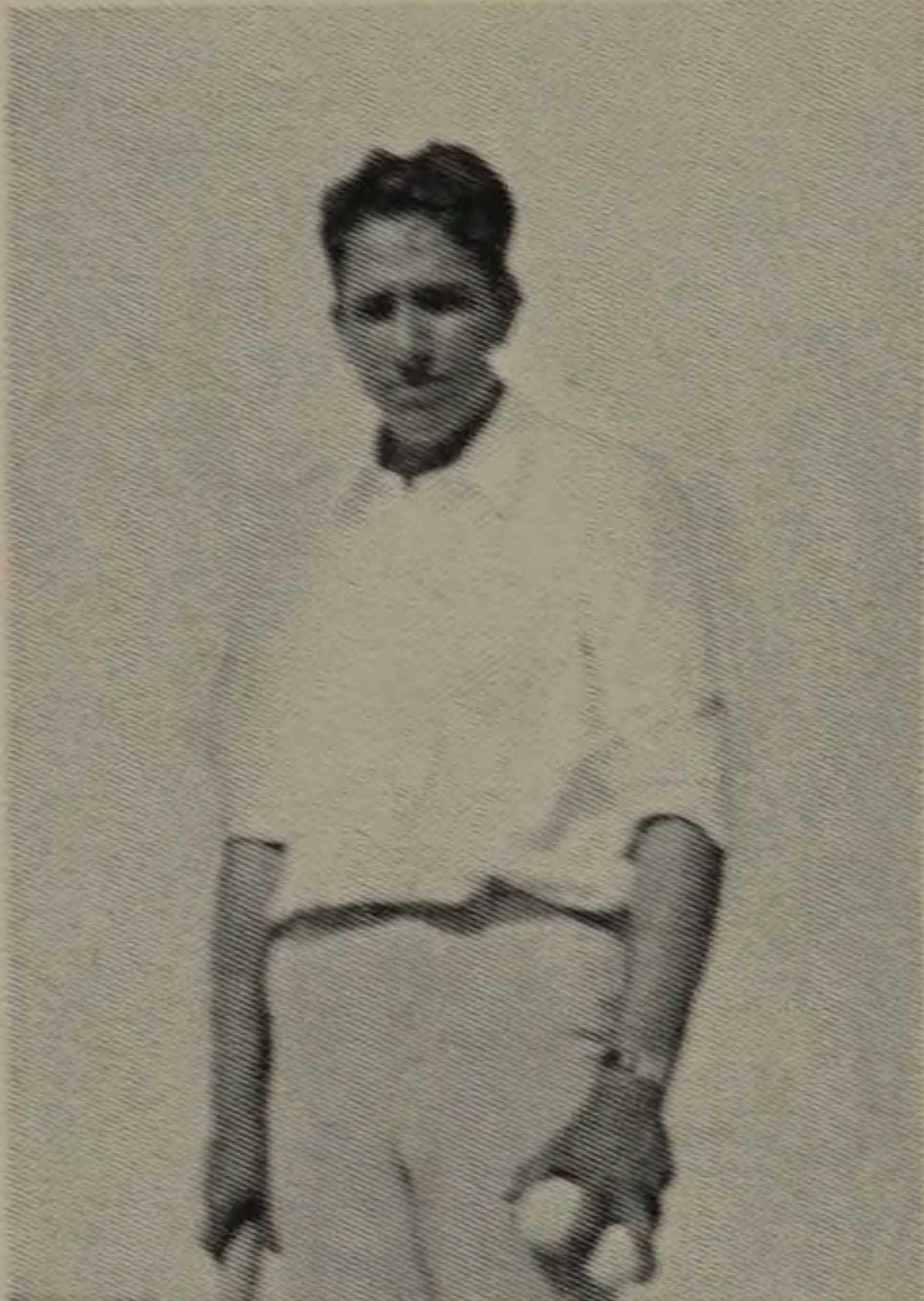
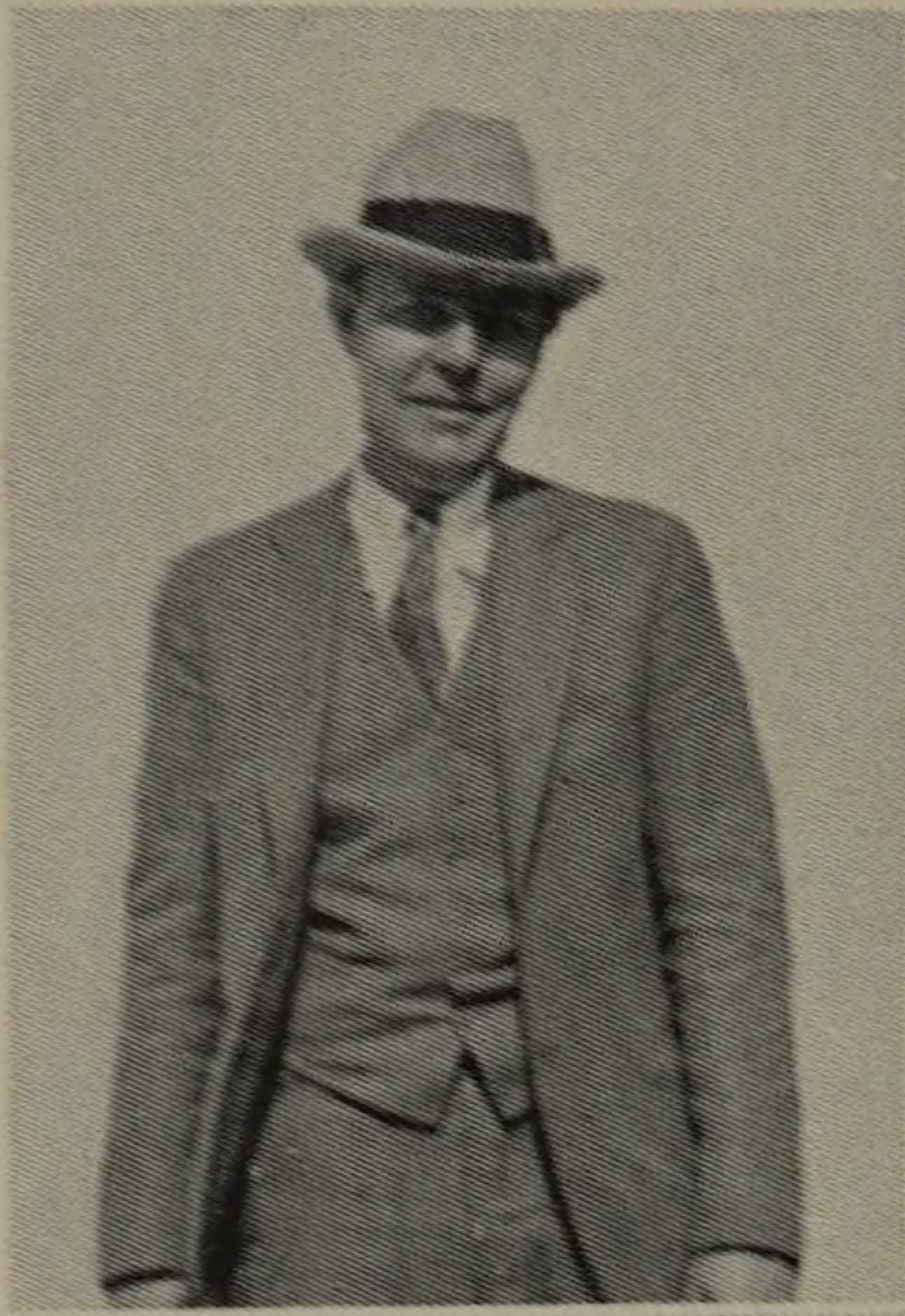
TENNIS, 1932

Not since the days of George Jennings has a Tech Tennis team enjoyed the success that the team of 1932 has. The team played a total of nine games, winning five and losing four. Of the four that were lost three of them went by only one match. The squad, under the popular leadership of Coach W. W. Colvert, was composed of the following men, listed according to the number they played, L. Streb, R. D. Armsbury, F. W. Paine, E. McDonough, and S. B. Cone. To G. W. Schodde, manager of the team, much of the success of the raquetteers is due.

Tech, in the season opener on April 29, lost to a strong Loyola squad by a score of 4 to 3. Armsbury and Cone won their singles matches and Paine and McDonough were victorious in the doubles to account for the Tech points.

In the return engagement on May 2, Armour returned the compliment by defeating Loyola by the same score. Streb, Armsbury, and Cone won in the singles, while Paine and McDonough won the deciding doubles match. May 14, the Ramblers of Notre Dame administered the only severe defeat of the season to the Tech netmen, when they defeated them by a score of 6 to 1. Wheaton also took advantage of Tech's relapse by scoring a 4 to 3 triumph the same week.

Tech netmen soon returned to form, winning their next three meets, defeating Lake Forest twice by scores of 5 to 2, and 7 to 0, and then journeying to Wisconsin to defeat Ripon by a score of 7 to 0.



COACH W. W. COLVERT

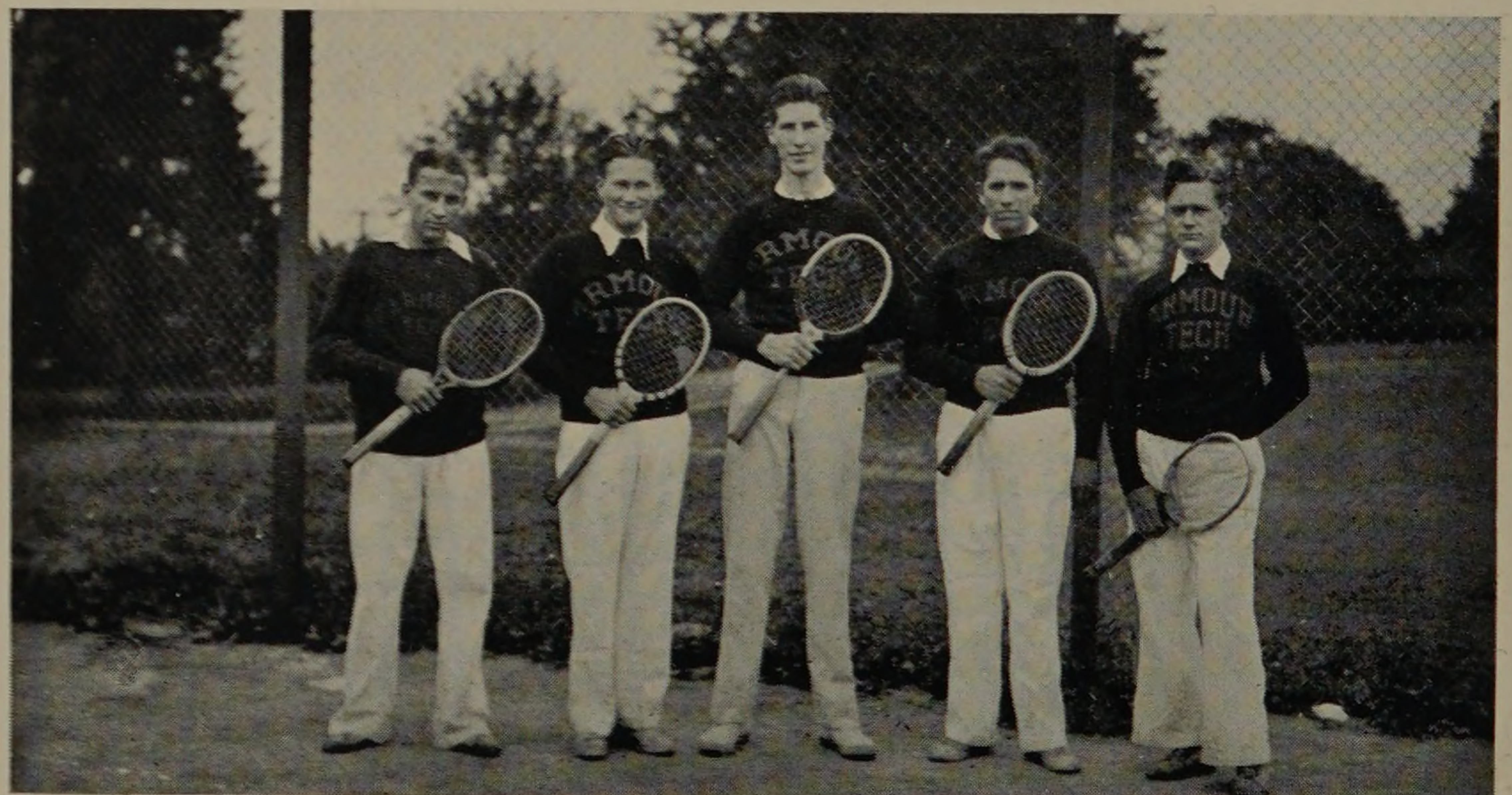
Professor Colvert finished his third year as coach of the Tech tennis team with the completion of the 1932 season. His influence in having the tennis courts refinished has proved of great benefit.

LOUIS H. STREB

Playing number one position throughout the season, Streb won seven singles matches while losing only two. He will captain the team in 1932.

GLEN W. SCHODDE

As manager of the 1932 tennis team, Glen Schodde was largely responsible for the success the team obtained. His encouraging words helped the players out of tough spots time and again.



Armsbury, Paine, Cone, Streb, Beal