

William C. Krafft ..... Coach  
 Harry P. Richter ..... Manager  
 (No captain was elected)

notable among which was a home run by "Mickey" Lukas that cleared the bases to put the game in the bag. However, the slug-  
 ging continued throughout the game with Armour displaying  
 a better attack with runners on bases.

The Armour nine continued their heavy hitting to win their  
 first league game at home, April 22, Wheaton being turned back  
 by a score of 6 to 2. Buehne, Tech pitching ace, allowed only  
 two hits.

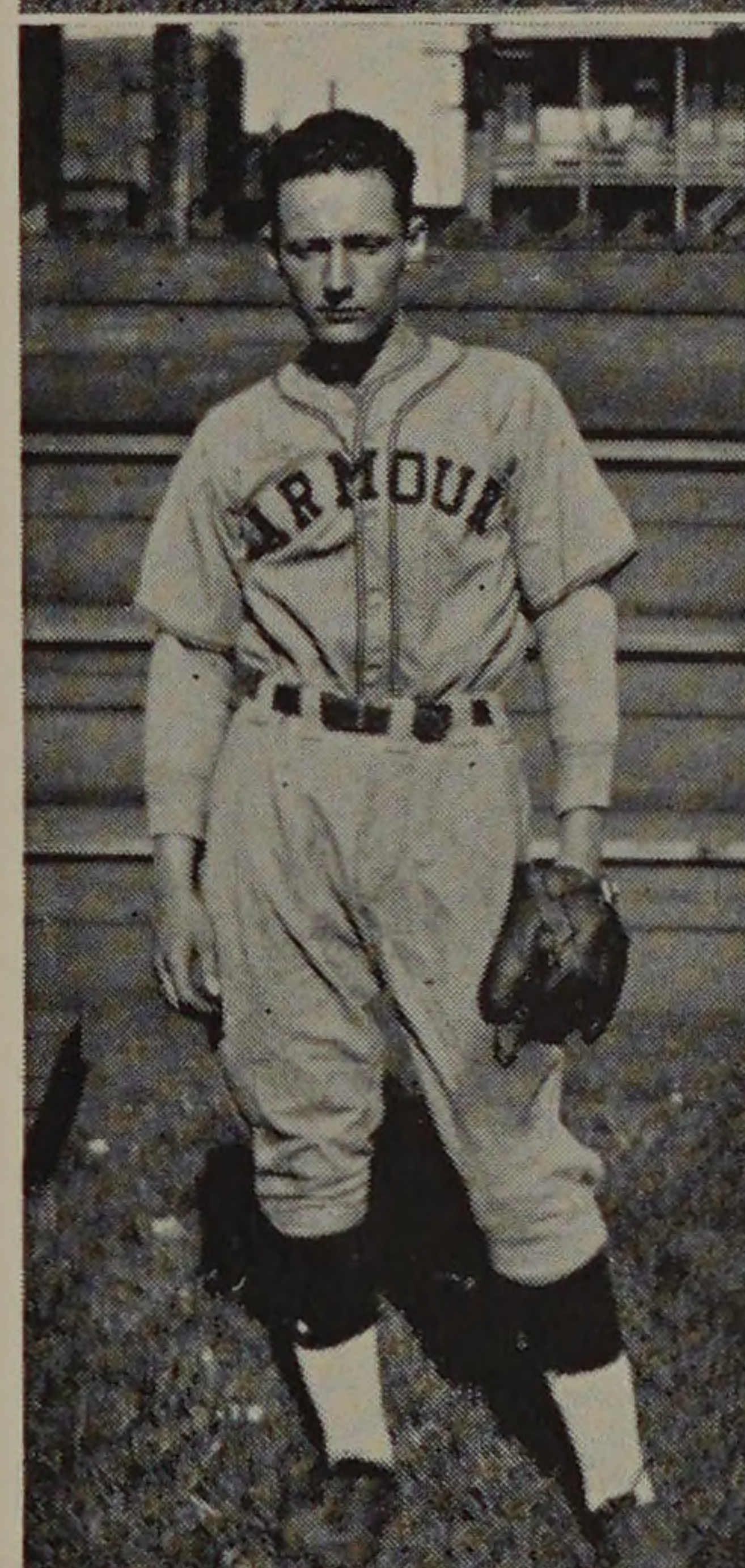
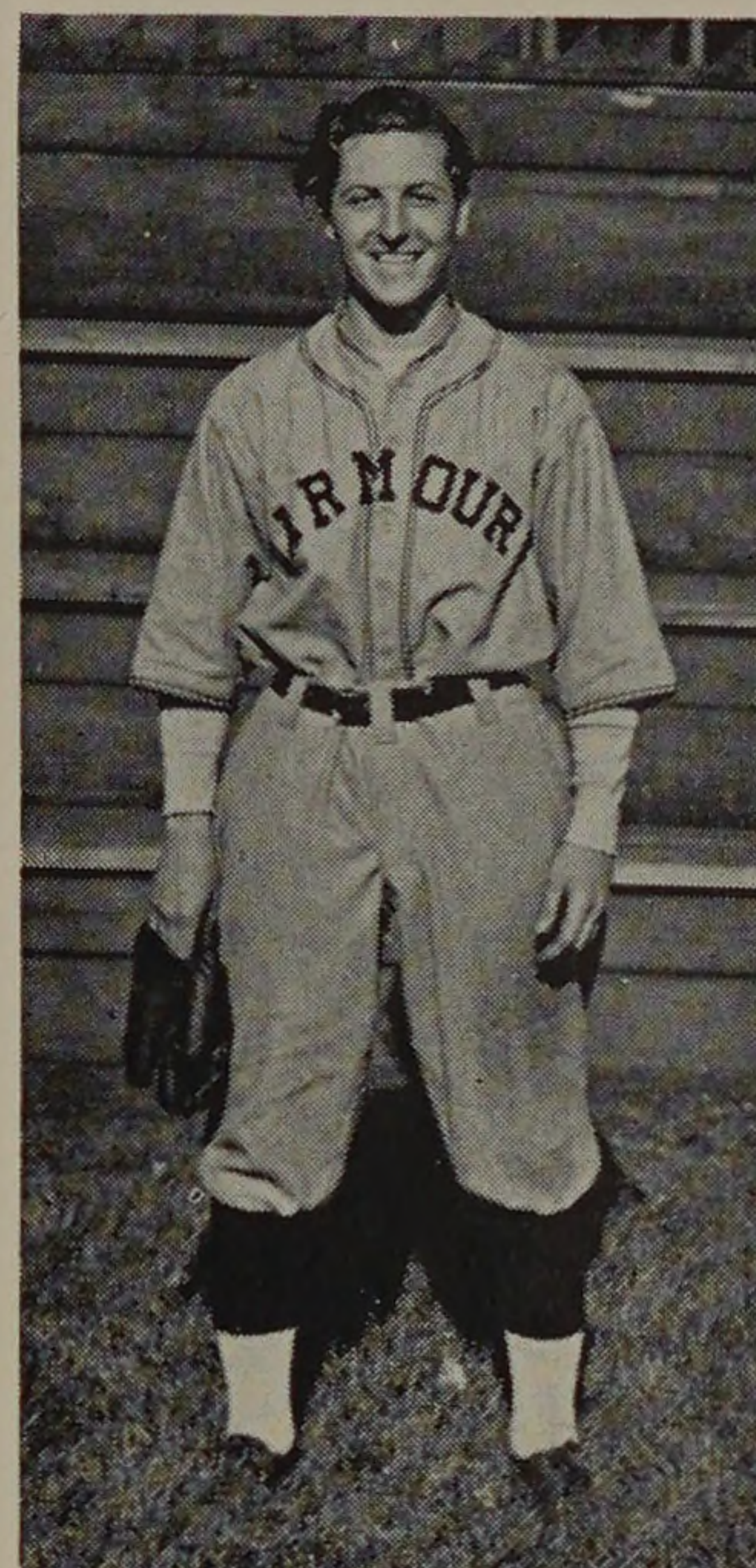
Wheaton scored a tally in the second inning on two errors  
 and two walks. In the first half of the fifth inning Wheaton was  
 stopped by a double play, Galvani to Vic Omiecinski to Tad  
 Omiecinski.

The Tech half opened with Buehne reaching first on an error.  
 Evans singled, and both runners scored on another single by Vic.

Armour scored two more in the sixth, holding Wheaton hitless.  
 Lillis singled, Sommer got to first on an error, and Buehne sacri-  
 ficed. Evans then banged the ball over the short right field fence  
 for a double, to clear the bases.

In the first of the eighth Buehne retired by way of strike out  
 route all three men who faced him. Tech concluded her scoring  
 in the last half by crossing the home plate twice.

Sommer singled and Buehne doubled for his second hit to put  
 two men on base. The next two struck out but Vic Omiecinski  
 doubled over the right field fence to score his teammates.



*Plenty of time, Charlie*

#### ROY F. YOUNG

Roy Young was the only  
 senior on the Tech squad.  
 Last season he was shifted  
 from his former position be-  
 hind the bat to the outfield.  
 He was a consistant hitter,  
 and the team lost a valuable  
 player by his graduation.

#### ARCHIE J. EVANS

"Archie" Evans, a fresh-  
 man, led the team in hitting  
 with a mark of .355. Thus  
 he was the only man on the  
 team to receive a gold base-  
 ball for this accomplish-  
 ment. His outfielding was  
 as brilliant as his hitting.

