

Charles E. Paul

DEPARTMENT OF SCIENCE

Charles E. Paul, S.B.

S. B. Massachusetts Institute of Technology
Professor of Mechanics, and Head of the Department of Science
Tau Beta Pi, Sphinx, Theta Xi

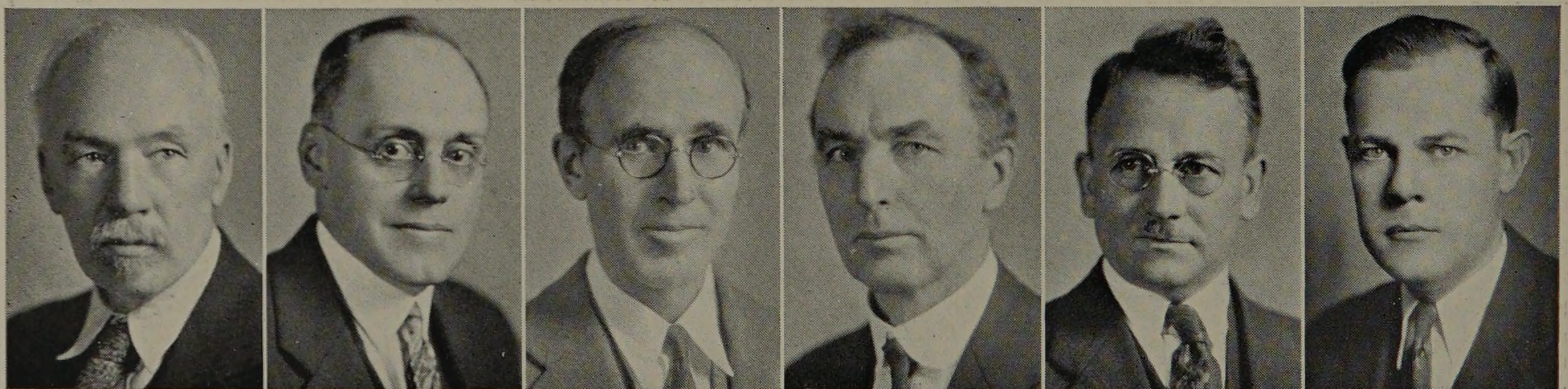
The Department of Science at Armour Institute of Technology is finishing the first year of its work. This new department was established in July, 1932, as the realization of a part of "The Armour Plan." Registration of students in the new division of work offered was opened in September, 1932. At the beginning of the second semester in February, 1933, an enrollment of twelve freshmen and one graduate student was reported.

The administrative organization of the Department centers in the grouping of the Departments of Physics, Mathematics, and Mechanics. The instruction in courses in chemistry shown in the curriculum of the Department of Science is given by members of the Department of Chemical Engineering.

The aim of the course of study offered by the Department is to provide a thorough training in the basic sciences relating to engineering, and a more extensive knowledge of the humanities than is customary in the usual engineering curricula.

A large proportion of the students who enter engineering schools each year have no definite purpose in following the course which they indicate on their entrance papers. Many of them choose a branch of the profession without careful thought as to the kind of work covered by it, their degree of interest in such

- Guy Maurice Wilcox A.M.
A.B. Carlton College
A.M. University of Wisconsin
Professor of Phys. and Head of Dept.
- William Charles Krathwohl Ph.D.
B.A. Harvard College
M.A. Columbia University
Ph.D. University of Chicago
Professor of Math. and Head of Dept.
National Council of Teachers of Mathematics
- Charles Wilber Leigh B.S.
B.S. University of Illinois
Professor of Analytic Mechanics
Tau Beta Pi, Sigma Kappa Delta, Phi Gamma Delta
- Thomas Eaton Doubt Ph.D.
B.S. Nebraska Wesleyan University
M.A. University of Nebraska
Ph.D. University of Chicago
Professor of Experimental Physics
Sigma Xi, Phi Kappa Phi
- John Frederic Mangold C.E.
B.S. Cornell College
B.E. and C.E. University of Iowa
Associate Professor of Mechanics
Beta Psi
- William White Colvert A.M.
A.B. and A.M. Cumberland University
Associate Professor of Physics
Sigma Xi



G. M. Wilcox

W. C. Krathwohl

C. W. Leigh

T. E. Doubt

J. F. Mangold

W. W. Colvert

