

*Ernest H. Freeman*

## DEPARTMENT OF ELECTRICAL ENGINEERING

Ernest Harrison Freeman, B.S., E.E.

B.S. Kansas State College

B.S. and E.E. Armour Institute of Technology

Professor of Electrical Engineering and Head of the Department

Tau Beta Pi, Eta Kappa Nu, Phi Kappa Phi, Phi Pi hi

Whither electrical engineering? In these days of reduced activity, we are naturally concerned about where we are bound and look to the future to see, if possible, what the days to come may bring forth. The only means of predicting the future are based upon studies of the past. Such studies lead us to believe that we shall emerge from this depression because we have gone through several others.

And then, what will happen in electrical engineering? Certain tendencies may be expected to continue as they have in the past. Activity, now halted, will be resumed. As examples of unfinished work, there remains one-third of our residences to be wired and supplied with energy for the many electrical household conveniences; thirteen million homes do not now have radio receiving sets; many millions of new telephones are yet to be installed. These are but samples indicating the tremendous consumers' market lying in the future.

That such a market will develop is further indicated by the fact that our national per-capita wealth has multiplied more than ten-fold in the last hundred years, and the trend is toward a much higher value than we now have. Future purchasing power will, therefore, be much greater than the past; and a generous market for all kinds of electrical goods and services appears quite well assured.

Except for a temporary set-back, electrical engineering is still on the up-grade.

John Edwin Snow E.E.

B.S., M.A., and M.S. Ohio University

E.E. Armour Institute of Technology

Professor of Electric Power Production

Eta Kappa Nu

David Penn Moreton

B.S. and E.E. Armour Institute of Tech.

Professor of Direct and Alternating Current Machinery

Tau Beta Pi, Eta Kappa Nu, Sigma Kappa Delta

Oliver Charles Clifford Ph.D.

A.B. Oberlin College

Ph.D. University of Chicago

Professor of Electrical Engineering

Sigma Xi

Charles Anson Nash B.S.

B.S. University of Illinois

Associate Professor of Elec. Engineering

Sigma Xi

Donald Elmer Richardson M.S.

B.S. and E.E. Armour Institute of Tech.

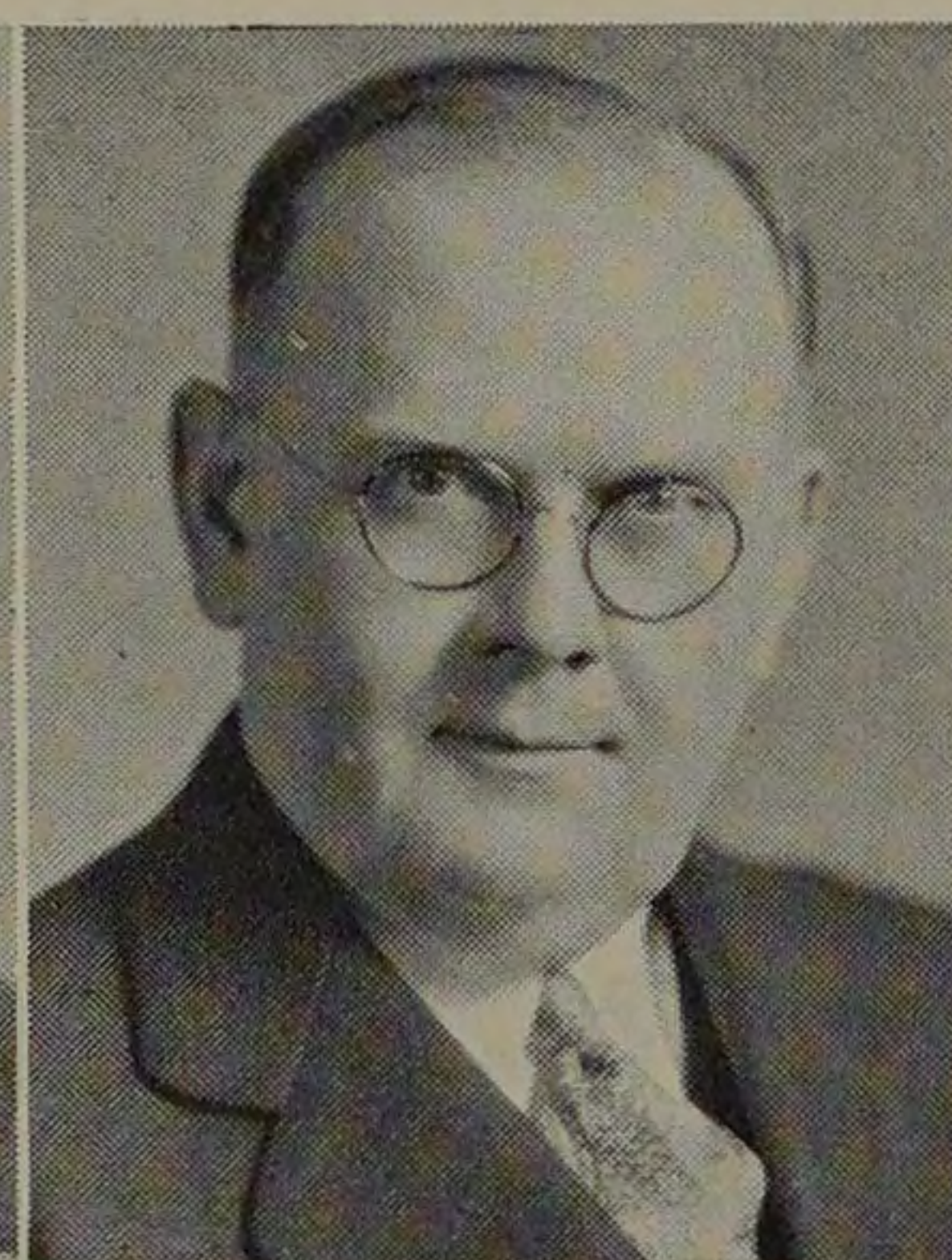
M.S. University of Chicago

Associate Professor of Electrical Measurements

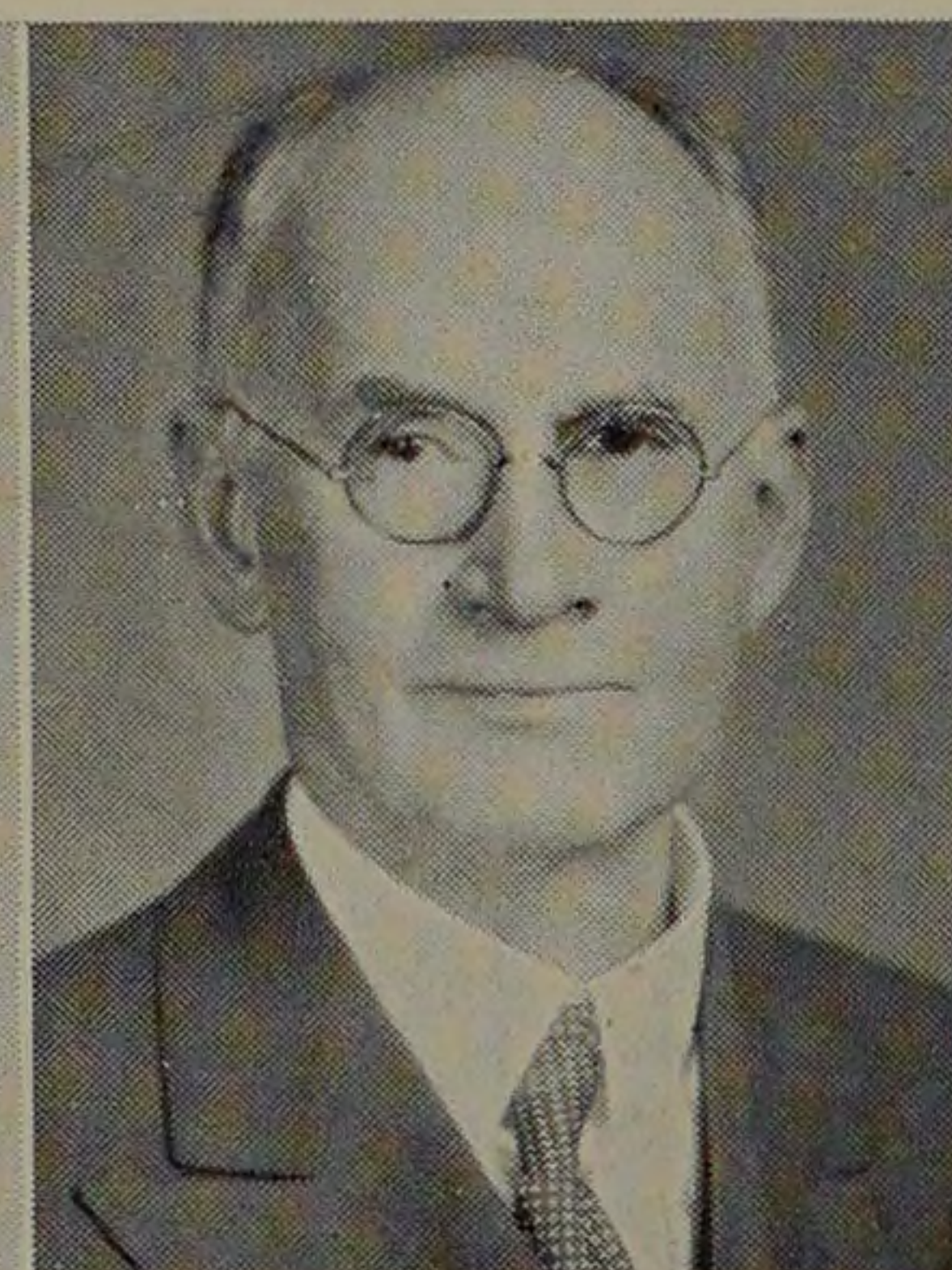
Sigma Xi, Tau Beta Pi, Eta Kappa Nu, Sigma Kappa Delta



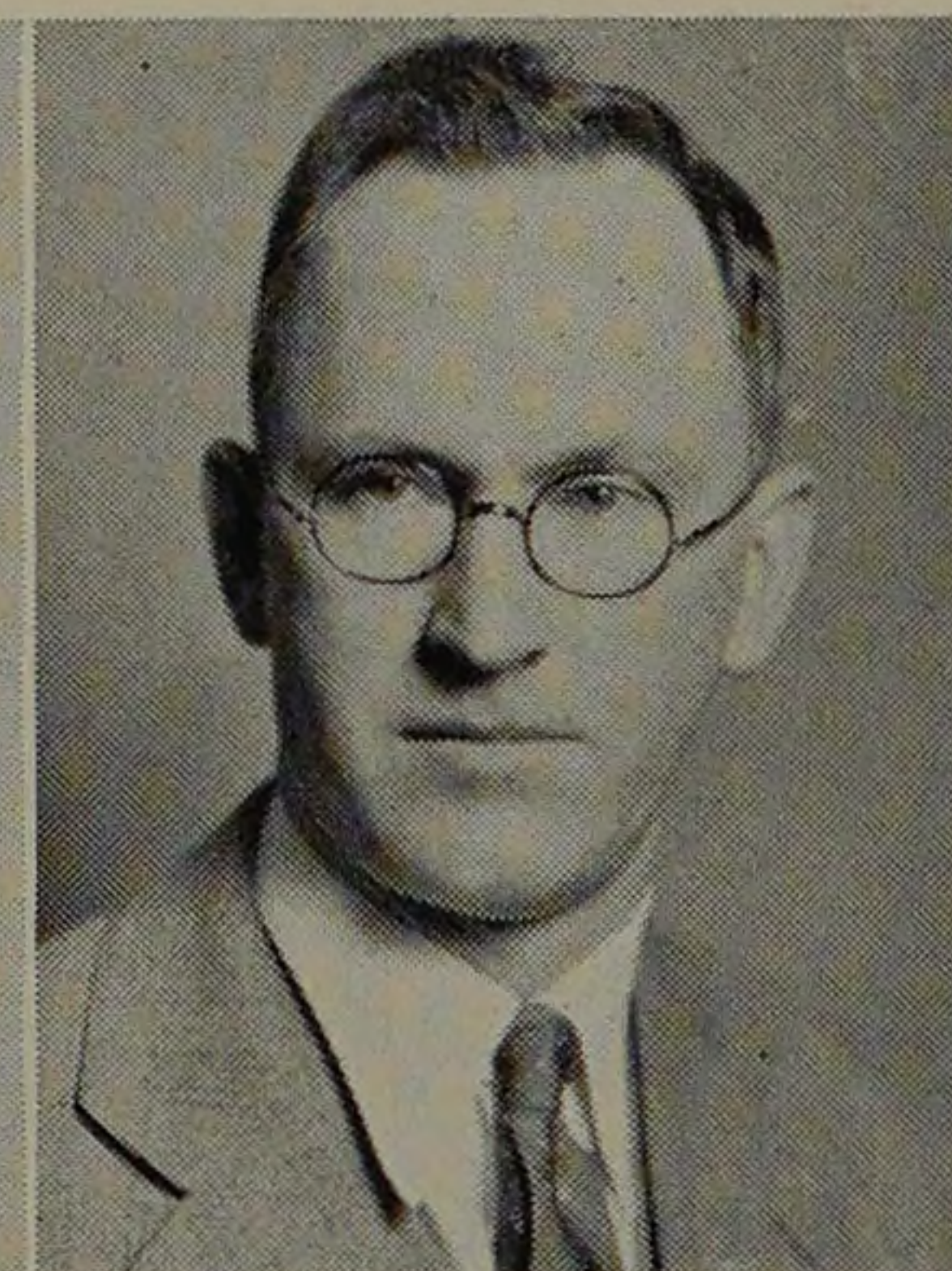
J. E. Snow



D. P. Moreton



O. C. Clifford



C. A. Nash



D. E. Richardson

Thirty-two

