

Harry McCormack

DEPARTMENT OF CHEMICAL ENGINEERING

Harry McCormack, B.S., M.S.

B.S. Drake University

M.S. University of Illinois

Professor of Chemical Engineering and Head of the Department

Tau Beta Pi, Phi Lambda Upsilon, Phi Beta Kappa

The enrollment in the department of chemical engineering has been heavier during the past year than at any time during its history. The customary acceptance of freshmen in this department is forty, but at the time of last year's enrollment it was decided to accept fifty entering freshmen in chemical engineering. The laboratory facilities have, therefore, been crowded to their limit during the past school year.

The most significant departure in the policy of the department for the past year has been the decision to accept students for one year's graduate work. And eight students have been taking this work during the school year.

The department of chemical engineering has been able to offer this graduate work, due to the cordial cooperation of men in other departments who have consented to give courses for graduate students and to the consent of certain members of the department of chemical engineering to take on additional work. It is believed that the year's graduate work has been successful and its continuance for at least another year is contemplated. There is, however, at the present time, no contemplation of prolonging the graduate work beyond one year.

Courses which have been offered by instructors in

Benjamin Ball Freud Ch.E.
Sc.B. and Ph.D. University of Chicago
Ch.E. Armour Institute of Technology
Professor of Organic Chemistry
Phi Beta Kappa, Sigma Xi

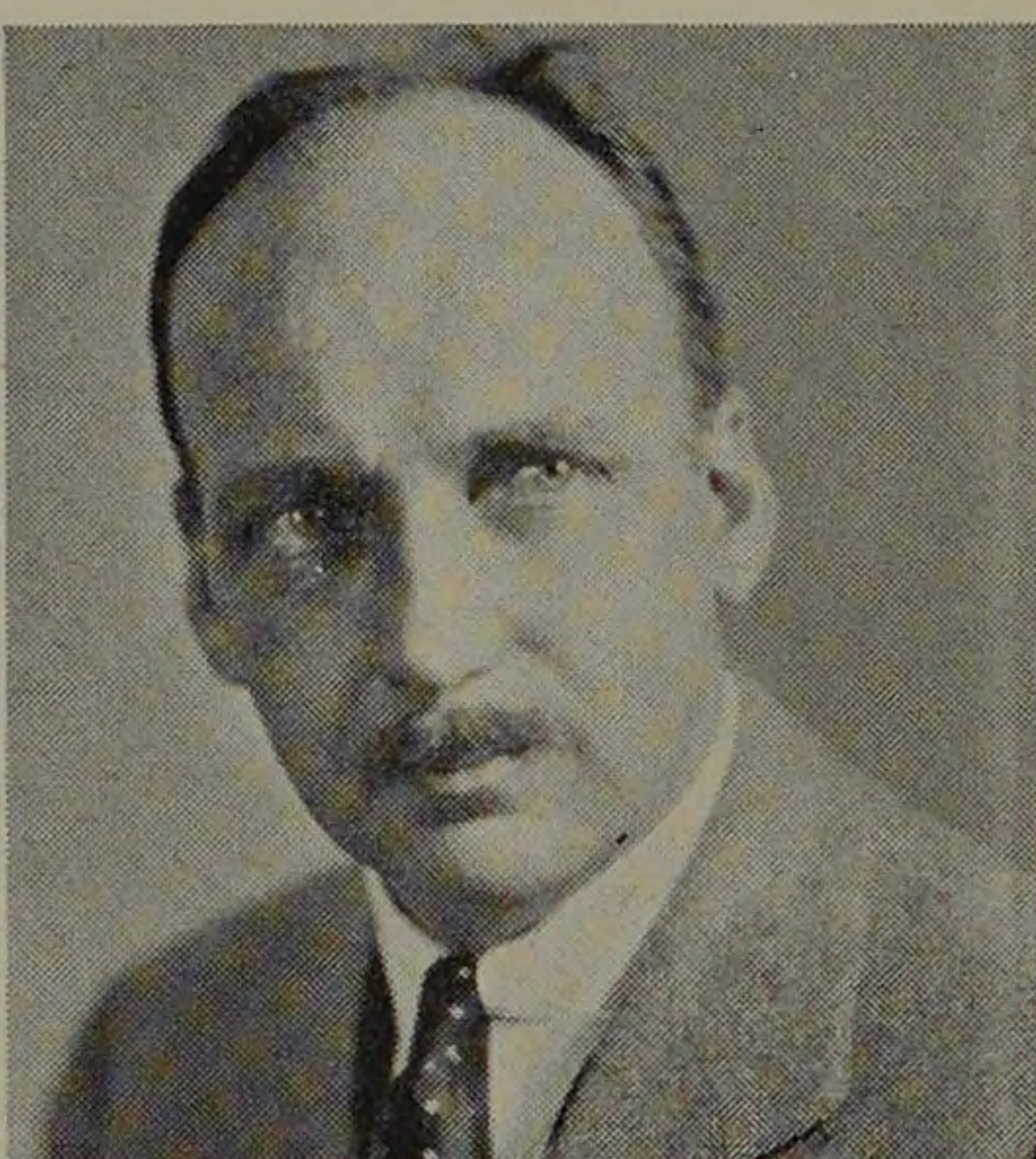
Charles Austin Tibbals Ph.D.
B.A., M.A. and Ph.D. University of Wisconsin
Professor of Analytical Chemistry
Phi Lambda Upsilon, Sigma Xi, Honorary Member of Alpha Chi Sigma, Phi Gamma Delta, Triangle

Eugene Edward Gill Ph.D.
Ph.B. and M.A. Dickinson College
Ph.D. Johns Hopkins University
Associate Professor of General Chemistry
Phi Beta Kappa

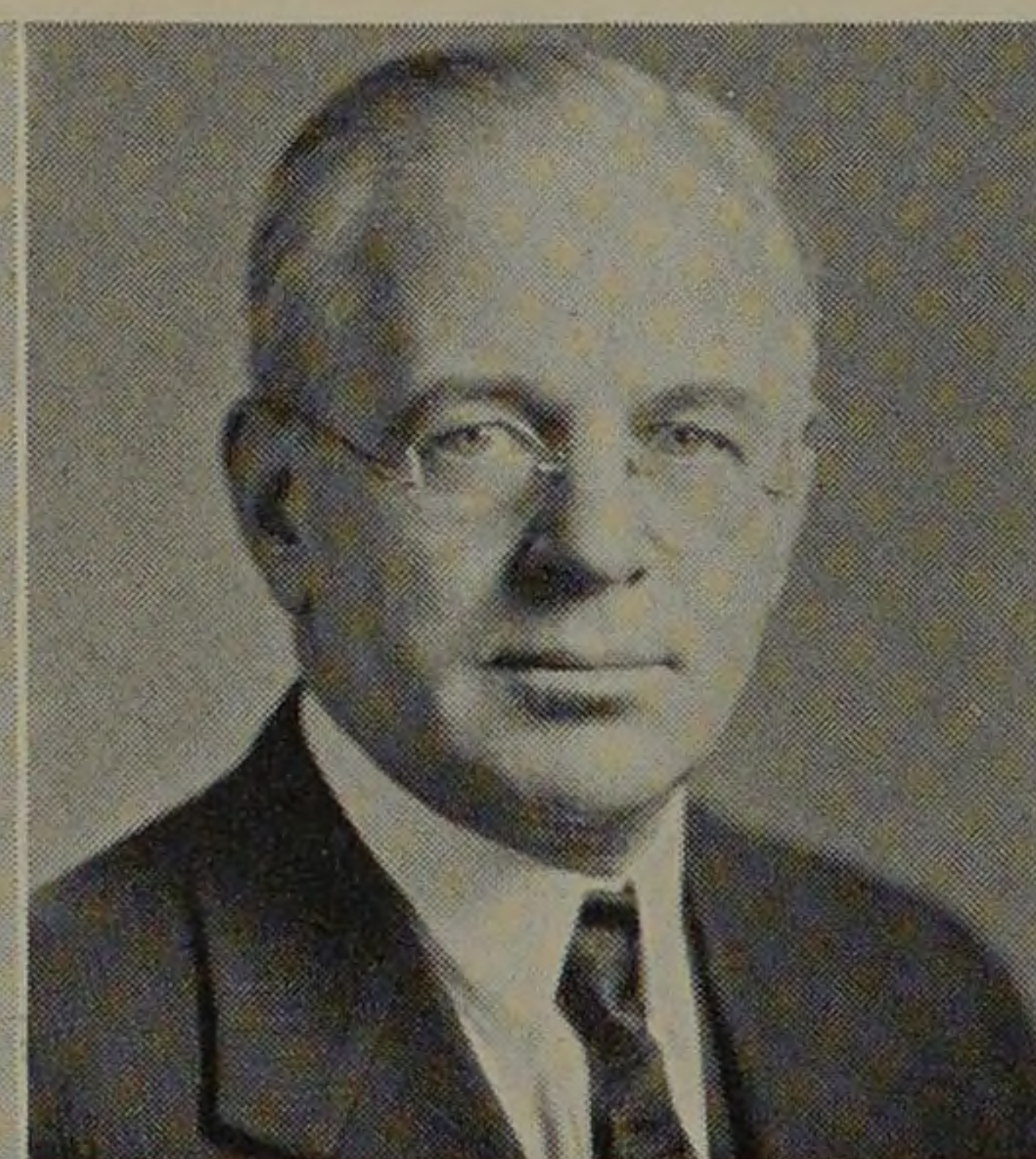
Arthur Howe Carpenter A.M.
A.M. Ohio University
Associate Professor of Metallurgy
Delta Tau Delta



B. B. Freud



C. A. Tibbals



E. E. Gill



A. H. Carpenter

Thirty

