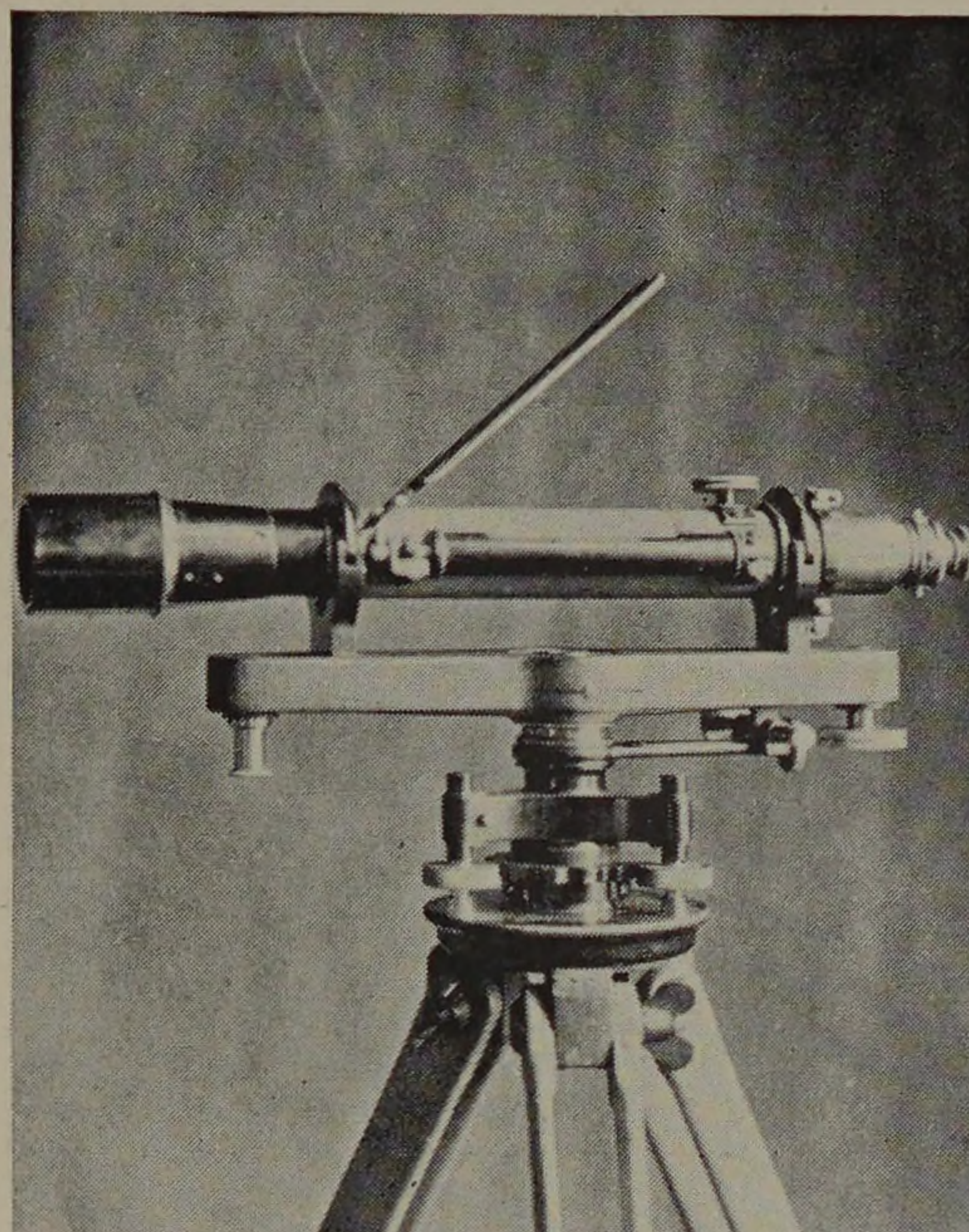


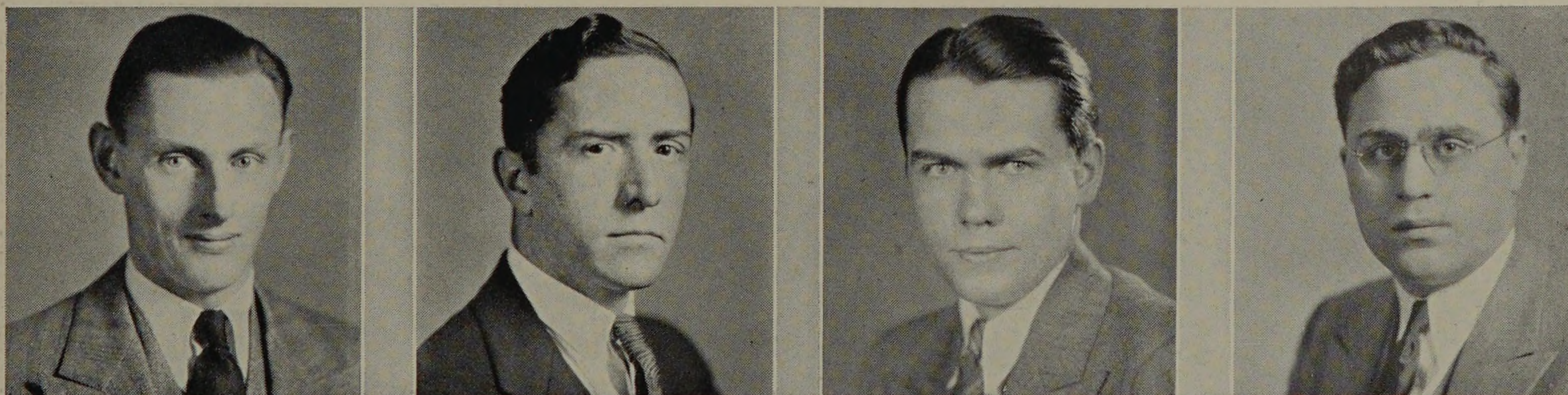
tion is designed to allow great flexibility of operation and various types of treatment including softening, iron, color, odor, taste, and turbidity removal, and sterilization, so that the most practical method of treating any type of raw water may be determined.

The plant is located in the basement and the three floors above at the south end of Chapin Hall. The desired type of raw water will be artificially prepared in one of two raw water control tanks, of approximately two thousand gallons capacity each, located in the basement. From these tanks it will be pumped to the first point of treatment on the third floor and then flow by gravity through each of the successive stages of treatment to the two thousand gallon filtered water reservoir in the basement. The research program will include experiments on turbidity, softening, coagulants, activated carbon, rate of filtration, rate of wash water application, and others. All equipment is modern and includes a specially designed aerator and mixer, an orifice box, chemical feed, filter, rate of flow controller, and a wash water pumping system for cleaning the filter. Professor Harold A. Vagtberg has charge of the installation of the plant and the work done with it will be under his supervision.

The Armour Branch of the Western Society of Engineers has been active through the year and a number of interesting and instructive lectures have been given by well-known engineers. Full advantage is being taken of the fact that the location of the Institute and its standing among engineers makes it possible to get such speakers. It is an important part of our educational program.



- Eldon Carlyle Grafton C.E.
 B.S. and C.E. Washington State College
 Assistant Professor of Structural Engineering
 Tau Beta Pi, Sigma Tau, Scabbard and Blade, Phi Kappa Phi, Chi Epsilon
- Sholto Marion Spears B.S.
 B.S. University of Kentucky
 Assistant Professor of Civil Engineering
 Tau Beta Pi
- Harold Alfred Vagtberg B.S.
 B.S. University of Illinois
 Assistant Professor of Municipal and Sanitary Engineering
- Joel Martin Jacobson B.S.
 B.S. Armour Institute of Technology
 Instructor in Civil Engineering
 Kappa Delta Epsilon
- Ernest K. Eugene B.C.E.
 Ing. Dipl. University of Chent
 B.C.E. University of Michigan
 (No picture)



E. C. Grafton

S. M. Spears

H. A. Vagtberg

J. M. Jacobson

