

George F. Gebhardt

DEPARTMENT OF MECHANICAL ENGINEERING

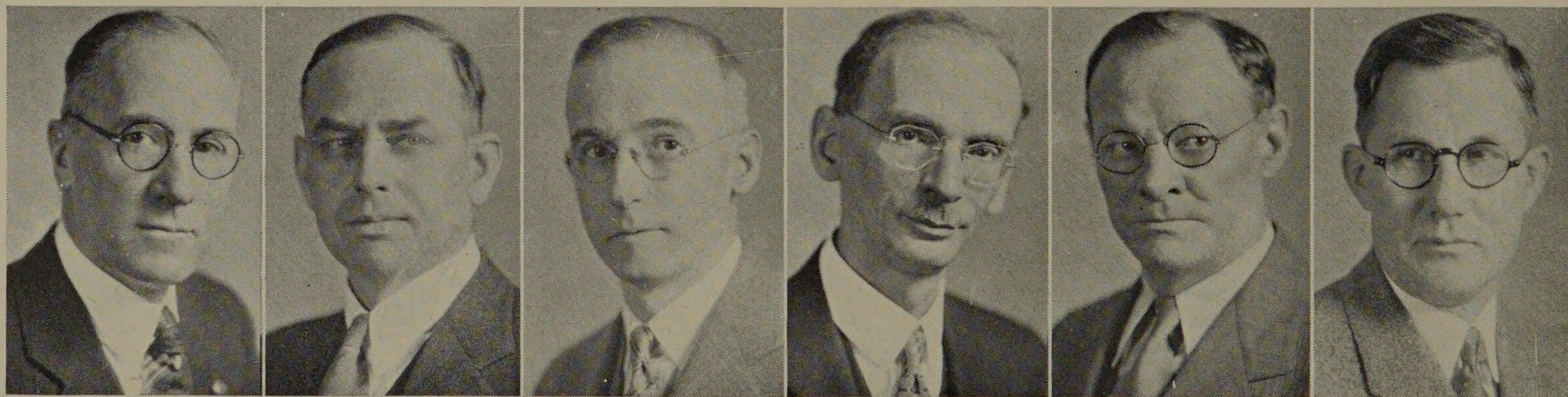
George Frederick Gebhardt, A.B., M.E.

A.B. and M.S. Knox College
M.E. Cornell University

Professor of Mechanical Engineering and Head of the Department
Tau Beta Pi, Pi Tau Sigma, Phi Delta Theta

What changes have been made since last year in the curriculum of the Mechanical Engineering Department and what new equipment has been added? What changes and additions are in view for the immediate future? These and similar questions have been asked from time to time. The answer is, None! No changes have been made in the curriculum because it is in conformity with that of the leading engineering schools of this country and because it has given the kind of training best suited to the needs of student and employer. No material change is contemplated at present, though it is quite probable that some adjustments may have to be made from time to time to meet with the demands of industry. It must not be inferred from this statement that there is no room for improvement—there is, and plenty of it—but more in increasing efficiency of instruction than in change of subjects. Armour is an engineering school, not a school of science, and as such its main objective is to train the student for the engineering profession. As for equipment, suffice to state that the present apparatus is wholly adequate for the purpose at hand. To be sure, modern up-to-the-minute devices are desirable for the purpose of showing the latest development of the art, but they are not essential to a thorough grounding in fundamentals. In industry a piece of machinery is not obsolete, whatever may be its age, until

- Robert Vallette Perry M.E.
B.S. and M.E. Armour Institute of Tech.
Dean of Evening Classes and Professor
of Machine Design
Tau Beta Pi, Pi Tau Sigma, Theta Xi
- Daniel Roesch M.E.
B.S. and M.E. Armour Institute of Tech.
Professor of Automotive Engineering
Tau Beta Pi, Pi Tau Sigma, Phi Pi Phi
- James Clinton Peebles M.M.E.
B.S. and E.E. Armour Institute of Tech.
M.M.E. Cornell University
Professor of Experimental Engineering
Sigma Xi, Gamma Alpha, Tau Beta Pi,
Pi Tau Sigma, Sphinx, Sigma Kappa
Delta
- Henry Leopold Nachman M.E.
B.S. and M.E. Armour Institute of Tech.
Professor of Thermodynamics
Tau Beta Pi, Rho Delta Rho
- Edwin Stephen Libby M.E.
B.S. and M.E. Armour Institute of Tech.
Professor of Refrigeration Engineering
Tau Beta Pi, Pi Tau Sigma, Sigma
Kappa Delta
- Philip Conrad Huntly B.C.E.
B.C.E. University of Arkansas
Professor of Experimental Engineering
Black Knight, Tau Beta Pi, Pi Tau Sigma,
Chi Epsilon, Sigma Chi, Triangle



R. V. Perry

D. Roesch

J. C. Peebles

H. L. Nachman

E. S. Libby

P. C. Huntly

