

COACH LEIGH

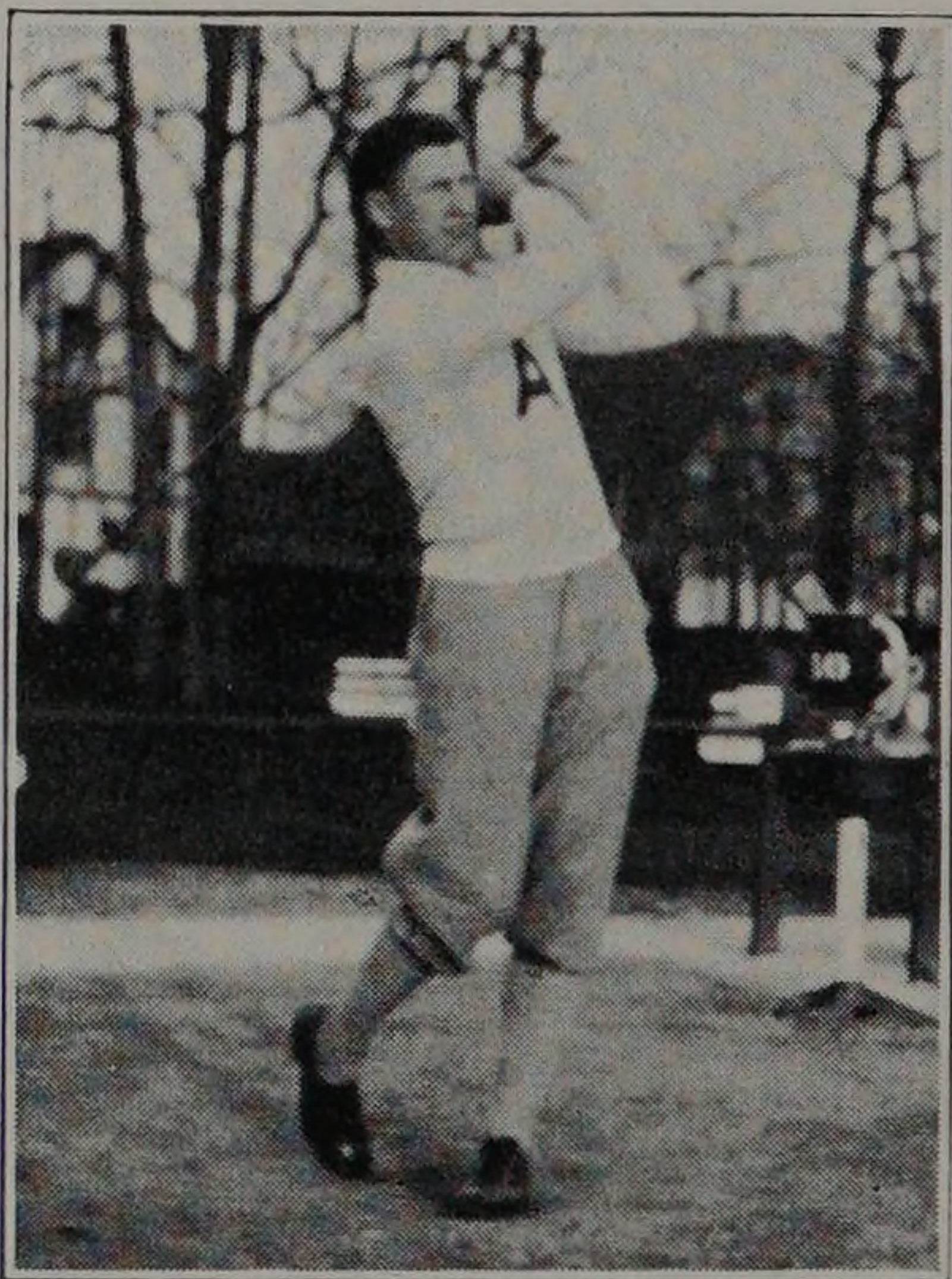
GOLF

- CHARLES W. LEIGH.....Coach
- HENRY CHRISTIANSEN.....Captain

The 1929 golf team going through one of its toughest schedules ended up with a very successful season.

Armour lost its first meet of the season to a more experienced alumni team by the score of 14½ to 9½. The team then walked over Crane, 16½-11½. "Tech" dropped the next match to Northwestern University, 17½-1½, the worst defeat of the year. Armour then defeated Loyola, 10 and 8. Armour's next victim was St. John's University of Toledo, Ohio, 10 and 8. Loyola then evened up its previous defeat to the tune of 9½ to 8½. In the final match of the season, Armour easily overcame St. John's a second time, 13 and 5.

The success of this year's team is due to Captain Henry Christiansen, Floyd Ong, Frank Pfeifer, Henry Weis, and John Sitzler. Professor Leigh deserves much credit for coaching the men into a very successful team.



CAPT. CHRISTIANSEN