

EARL H. REED, JR. S.B.  
Professor of Architecture, and Head of the Department.  
Delta Kappa Epsilon.

CLYDE BARNES COOPER A.M., Ph.D.  
Professor of English, and Head of the Department.

WALLACE BRUCE AMSBARY  
Professorial Lecturer in General Literature.

JOHN EDWIN SNOW B.S., A.M., M.S., E.E.  
Professor of Electric Power Production.  
Eta Kappa Nu.

MELVILLE BAKER WELLS B.C.E., C.E.  
Professor of Civil Engineering, and in charge of Aeronautical Engineering.  
Tau Beta Pi, Honorary Member of Chi Epsilon, Phi Delta Theta.

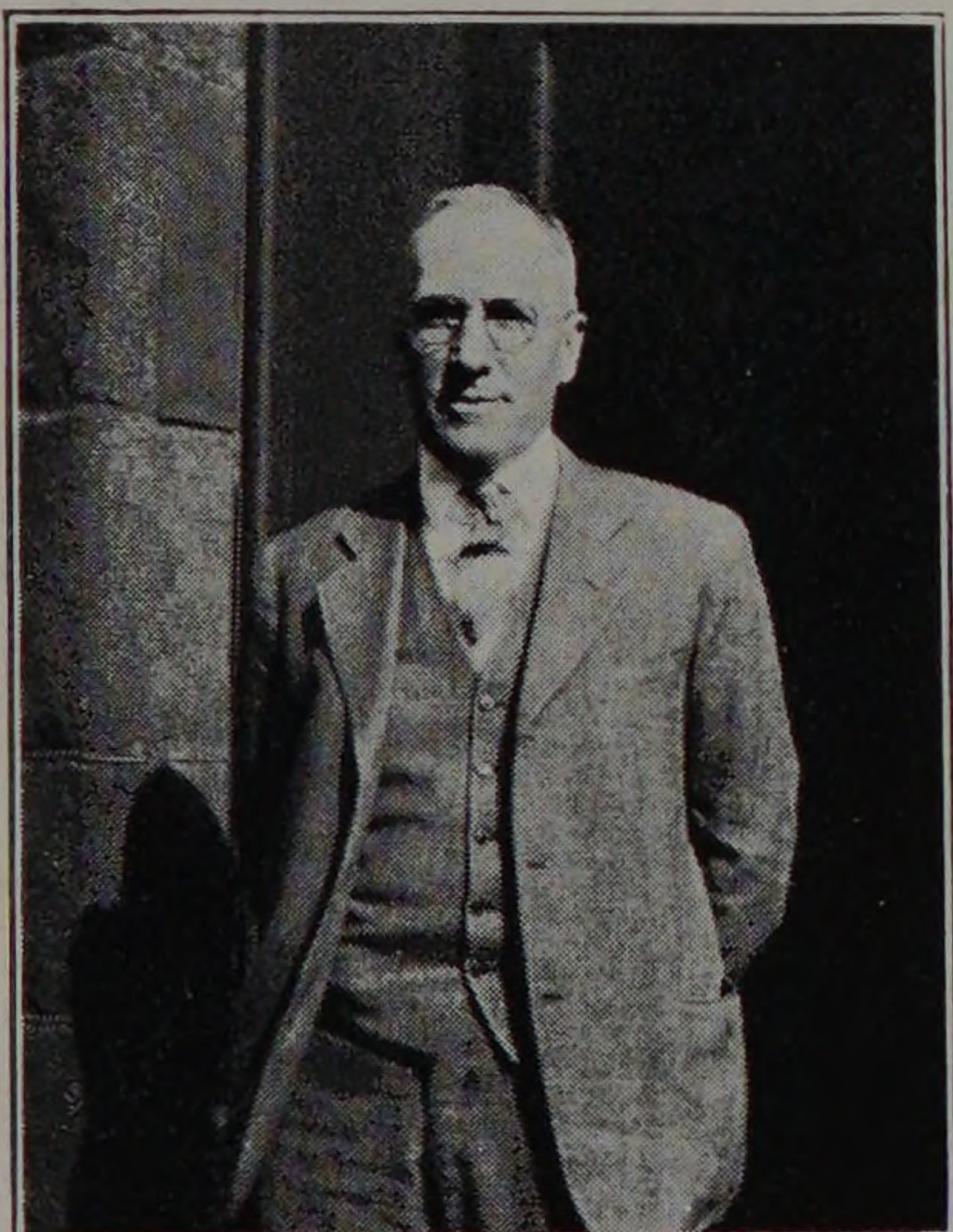
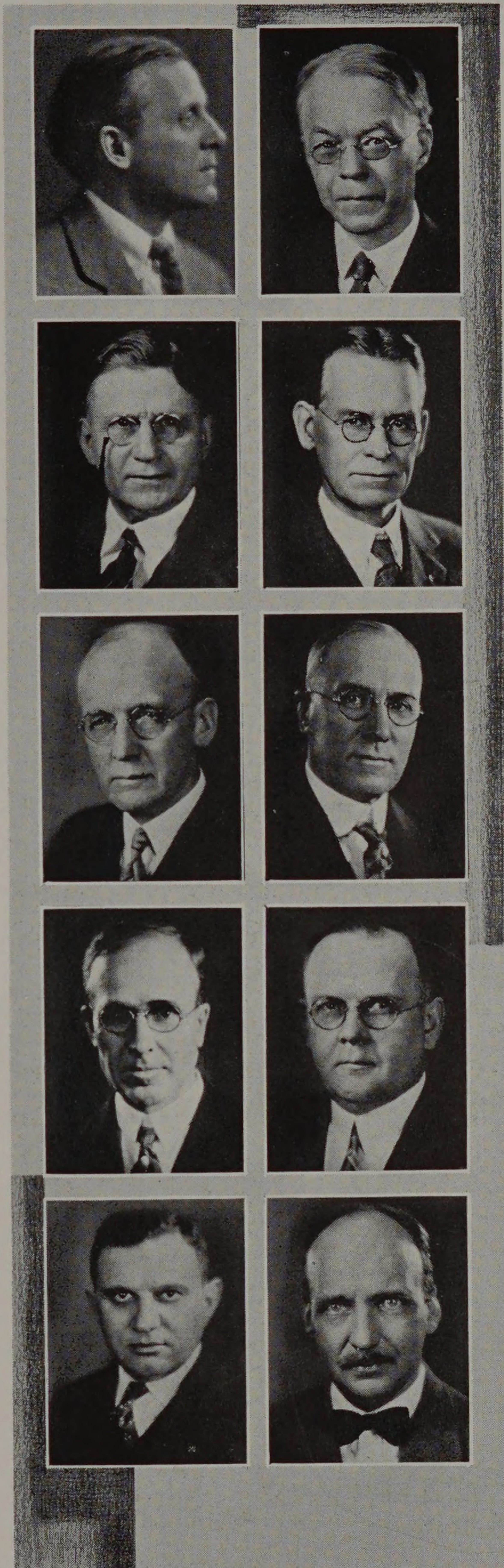
ROBERT VALLETTE PERRY B.S., M.E.  
Professor of Machine Design, and Director of Evening Classes.  
Tau Beta Pi, Theta Xi.

CHARLES WILBUR LEIGH B.S.  
Professor of Analytic Mechanics.  
Tau Beta Pi, Sigma Kappa Delta, Phi Gamma Delta.

DAVID PENN MORETON B.S., E.E.  
Professor of Direct and Alternating Current Machinery.  
Tau Beta Pi, Eta Kappa Nu, Sigma Kappa Delta.

BENJAMIN BALL FREUD Ph.D., Ch.E.  
Professor of Organic Chemistry.  
Phi Beta Kappa, Sigma Xi.

CHARLES AUSTIN TIBBALS, JR. A.B., A.M., Ph.D.  
Professor of Analytical Chemistry.  
Phi Lambda Upsilon, Sigma Xi, Honorary Member of Triangle, Phi Gamma Delta.



We know that R. V. can work a finesse in bridge but has any one ever finessed a credit in night school?