

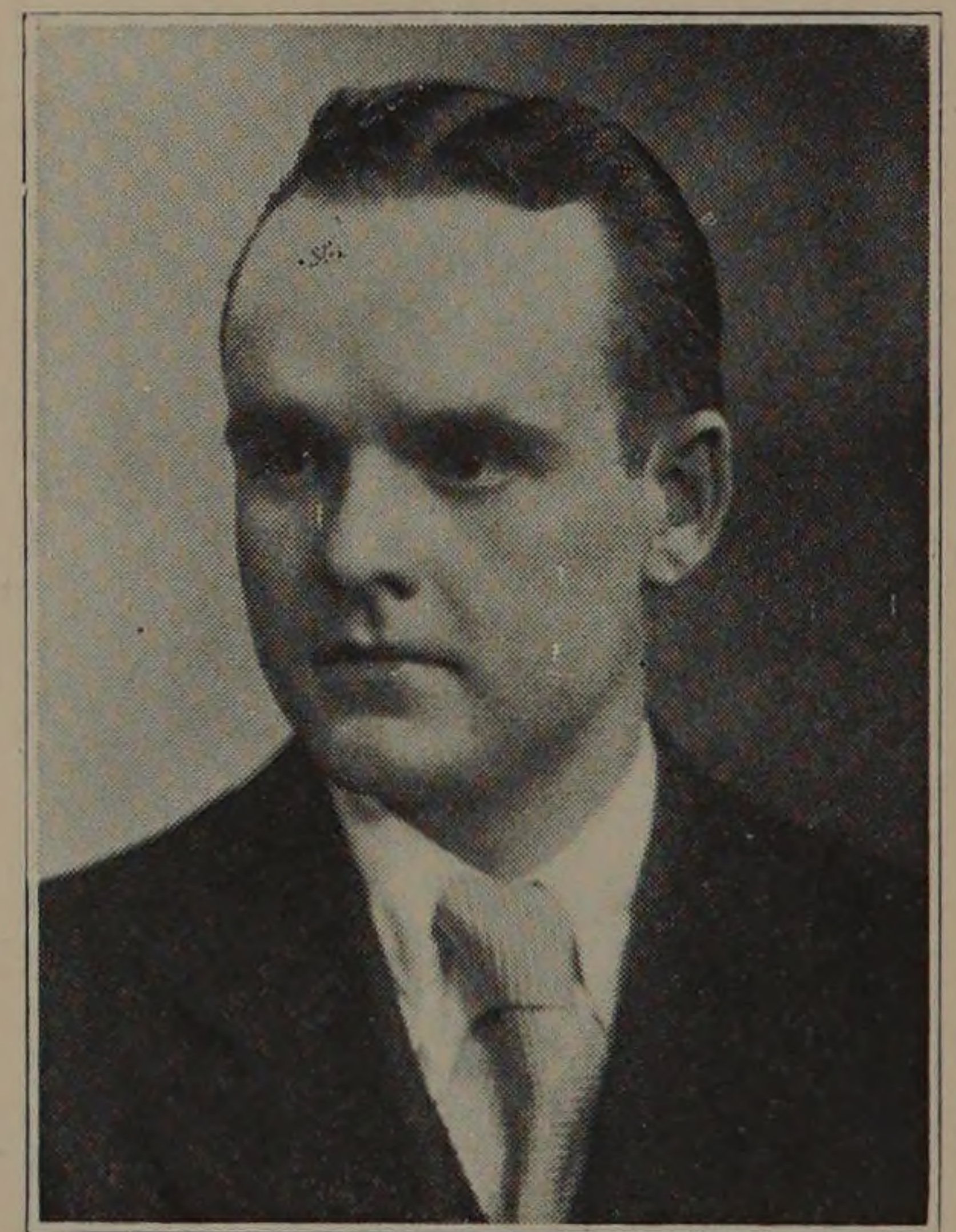


ORCHESTRA

GEORGE REZAC.....	} <i>Leaders</i>
DONALD L. WILLIAMS.....	

It seems to be the consensus of opinion that music and mathematics are two separate and distinct fields of endeavor, and further that an engineer possesses neither a musical soul nor the love of harmony. Be this as it may, the orchestra has endeavored to prove that there is music, little though it may seem, in the engineer. It has not been the aim of the orchestra to master the symphonies, but rather to play more tuneful music of a lighter vein, that is appreciated and preferred by the engineer.

Throughout the first semester the orchestra was under the capable leadership of George Rezac, during which time it made appearances at the various assemblies and the Christmas concert. At the mid-semester graduation George was forced to leave the orchestra and turn his leadership over to Don Williams, who has most successfully carried on the work.



DONALD L. WILLIAMS