

LEADERS

DR. DANIEL PROTHEROE.. *Glee Club*

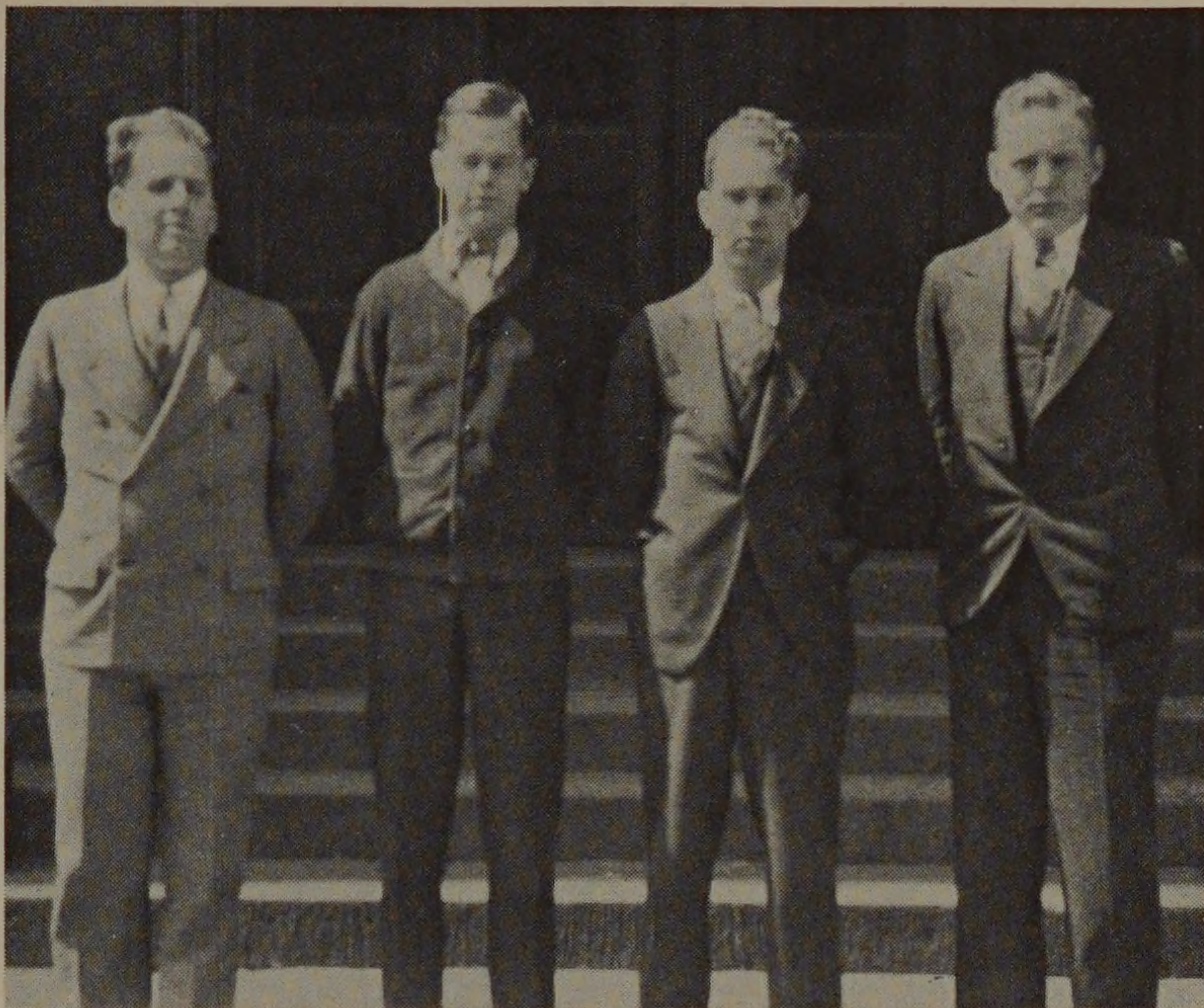
GEORGE A. REZAC..... *Band*

FRANK ASTE..... *Band*

GEORGE A. REZAC..... *Orchestra*

DONALD L. WILLIAMS.... *Orchestra*

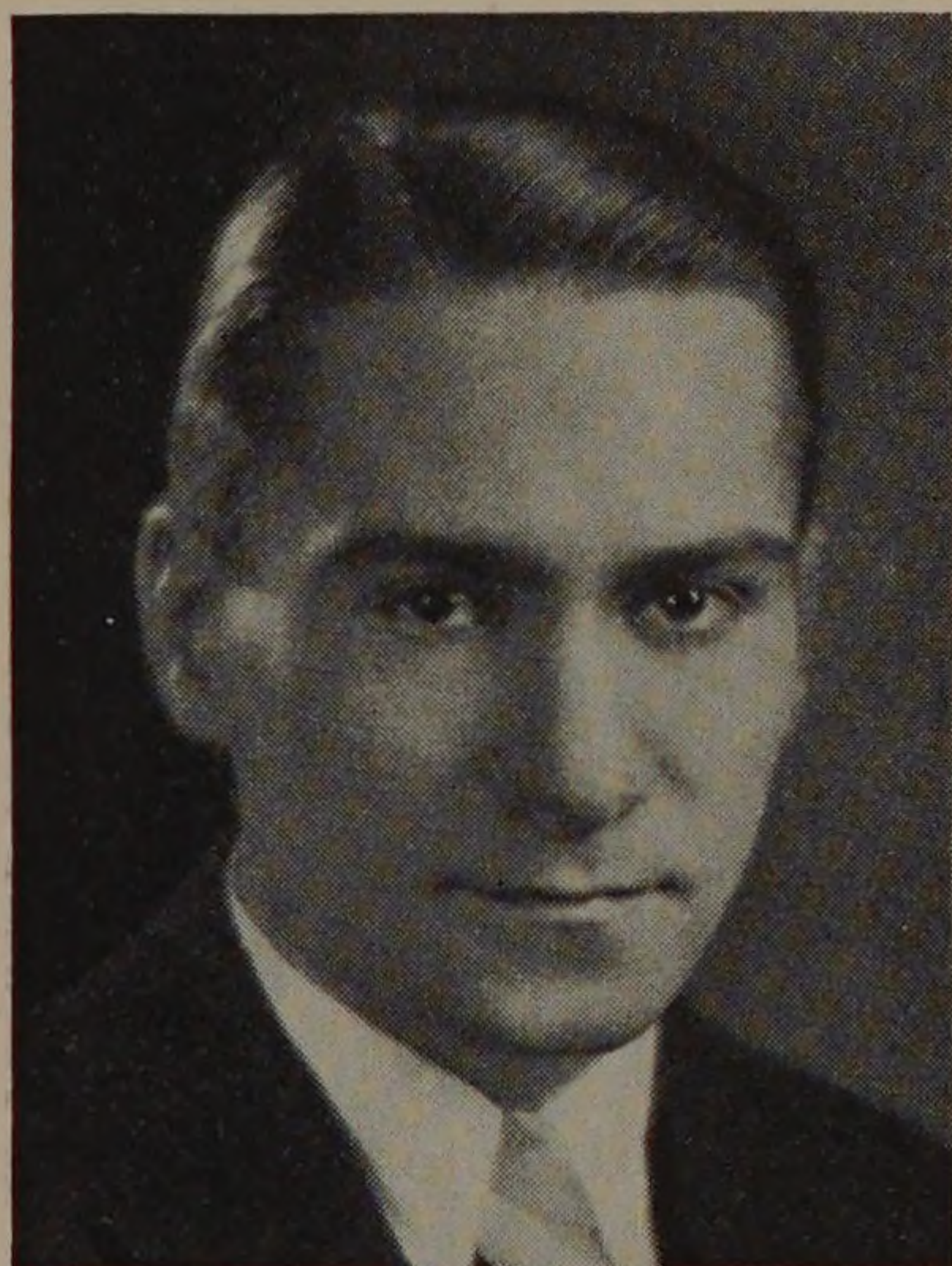
EDWARD CRAIG. *Stresses and Strains*



MANSKE, JOHNSTON, HELLER, HAFNER

As usual, the Band and Orchestra have been important factors in the success of the assemblies. Music by one of these organizations always starts an assembly meeting with a bang, and seems to put the students in an acceptive mood for what is to follow.

The musical climax of the year was the annual Home Concert given May 15. At this concert each of the Clubs put on a truly finished production. The Orchestra played numbers which in previous years it was afraid to attempt, the Band was marvelous, the Glee Club sang as it never sang before, and last but not least—Stresses and Strains would have been the envy of Paul Whiteman. Not only was the playing comparable to that of the masters, but many novelty numbers and specialties were offered. A quartet of singers, individual numbers, special arrangements, singing numbers with the Stresses and Strains, and then the fraternity sing made this concert one not easily forgotten, or duplicated. With this display of the wares of Armour's musical talent, the Clubs officially closed their season.



GEORGE A. REZAC