

SAMUEL FLETCHER BIBB *S.B., M.S.*
Assistant Professor of Mathematics.

JAMES RINALDO GRIFFITH *B.S., C.E.*
Assistant Professor of Hydraulic and Sanitary
Engineering.
Beta Psi.

HARRY HOWE BENTLEY *B.S.*
Assistant Professor of Architectural Design.

DONALD ELMER RICHARDSON *B.S., E.E.*
Assistant Professor of Electrical Measurements.
Sigma Kappa Delta, Tau Beta Pi.

HENRY TOWNLEY HEALD *B.S., M.S.*
Assistant Professor of Civil Engineering.
Sigma Kappa Delta, Tau Beta Pi.

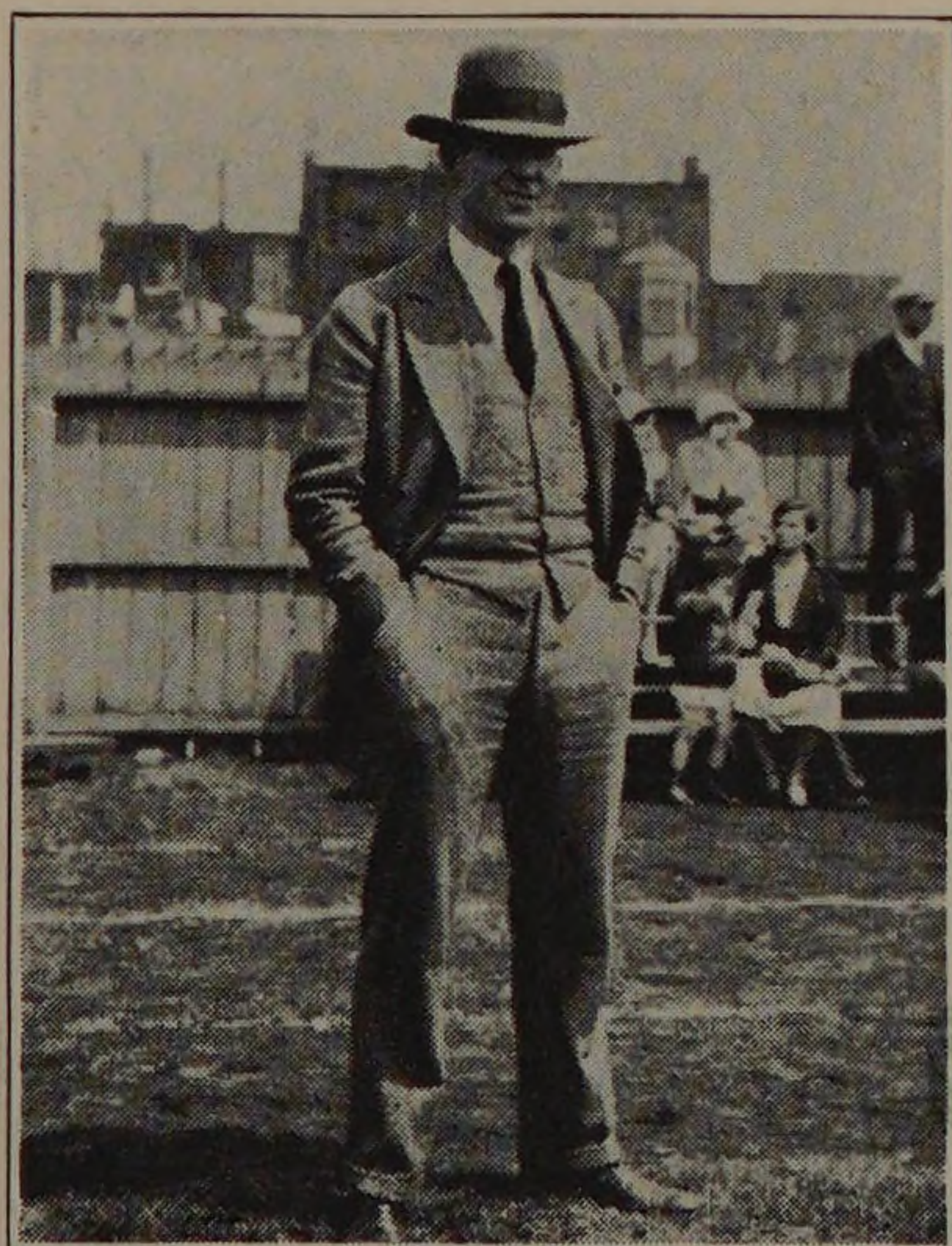
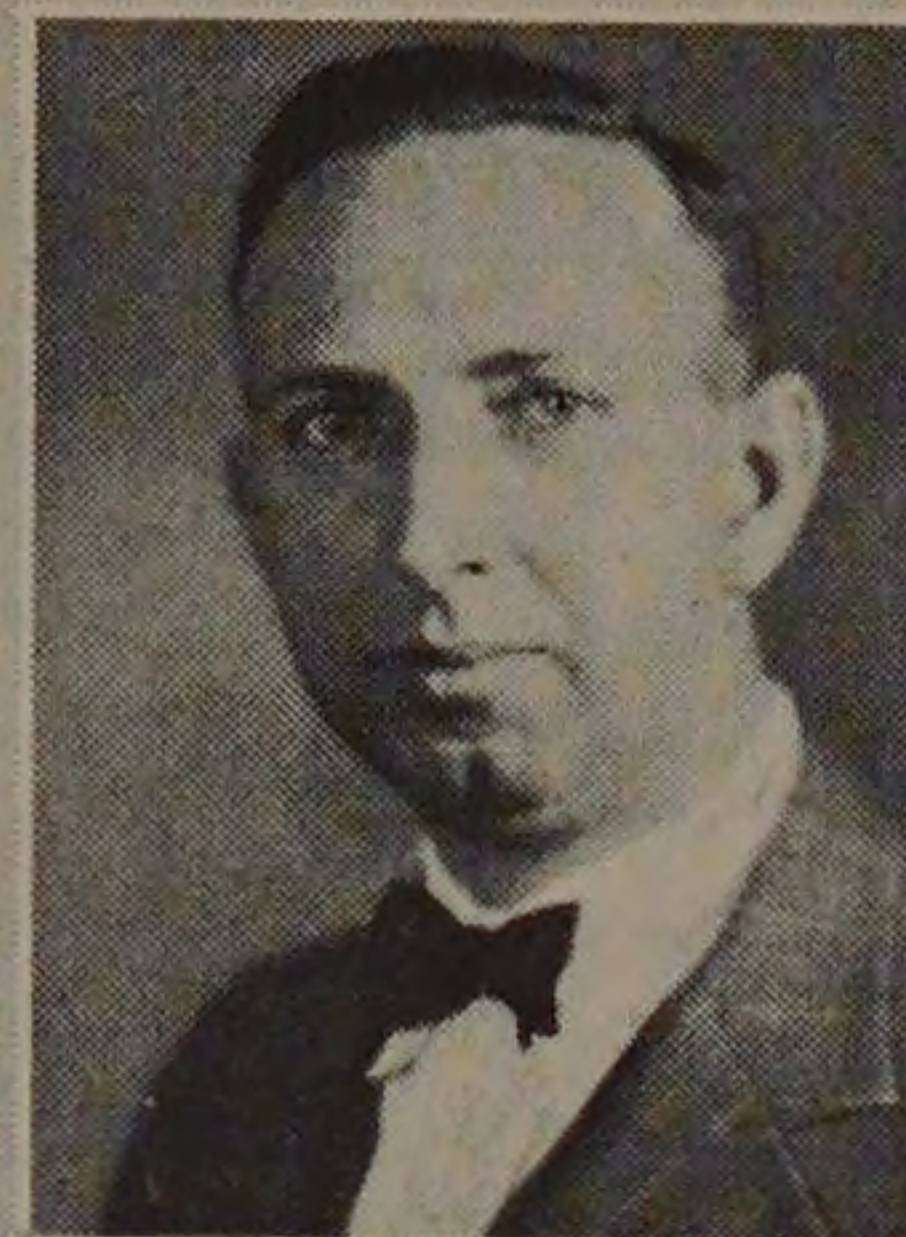
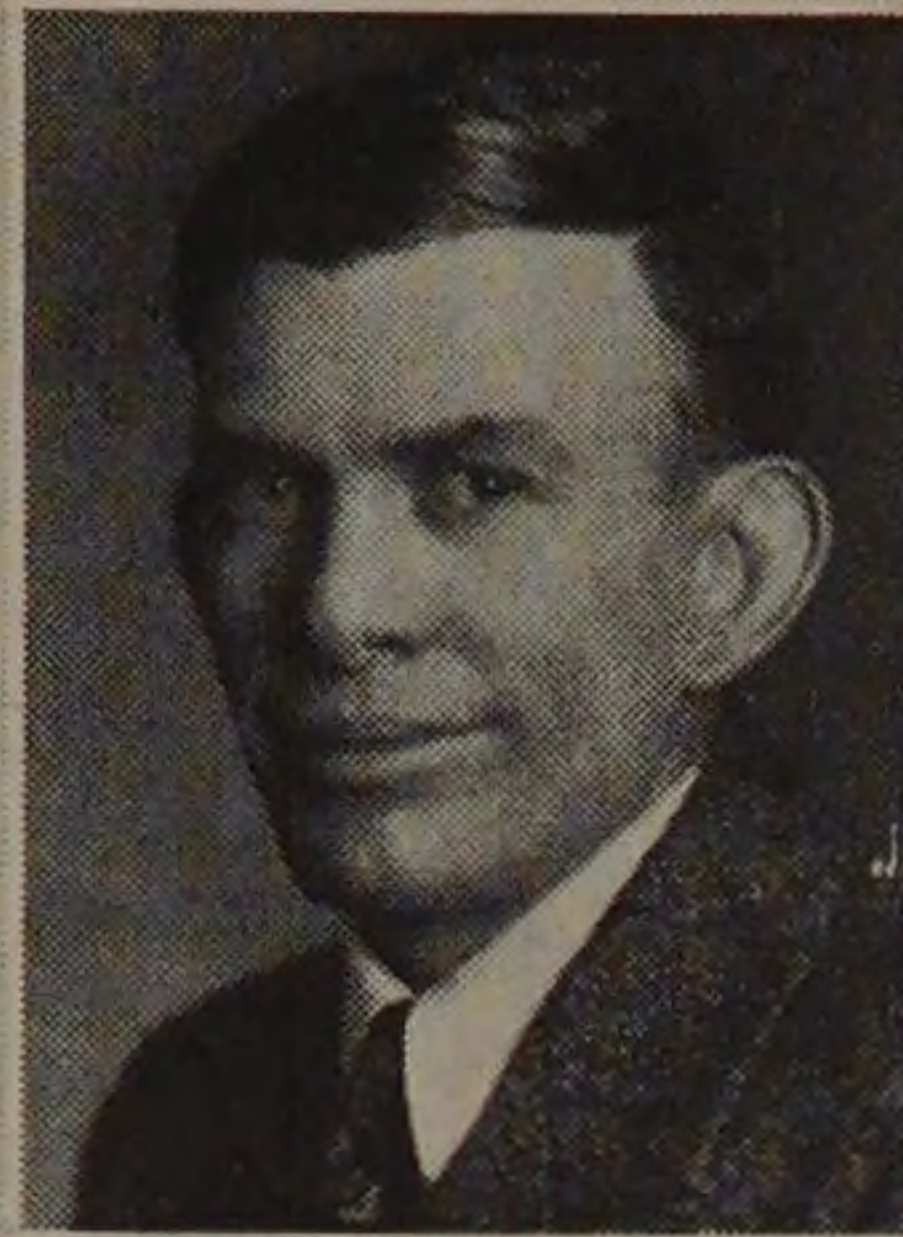
VAN BAUMAN TEACH *B.A., B.E.E., M.Sc.*
Assistant Professor of Mathematics.
Phi Kappa Tau, Tau Beta Pi, Sigma Xi, Eta
Kappa Nu, Pi Mu Epsilon.

SAMUEL JOSEPH McLAREN, JR. *B.S.*
Assistant Professor in Fire Protection Engineering.
Delta Tau Delta, Tau Beta Pi, Salamander.

CHARLES PAGE HOLMES *S.B.*
Assistant Professor of Fire Insurance.
Alpha Chi Epsilon, Salamander.

NELS PETER PETERSON
Instructor in Woodworking.

CHARLES HENRY FORNHOF
Instructor in Machine Tool Work.



*A happy smile known only to the "prof" free from
the worries of the class room. Richardson is taking
Circus Day to smile and be happy.*