

JOHN FREDERIC MANGOLD *B.S., C.E.*
Associate Professor of Mechanics.
Beta Psi.

WILLIAM CHARLES KRATHWOHL *A.B., M.A., Ph.D.*
Associate Professor of Mathematics.

ALBERT H. KREHBIEL
Associate Professor of Freehand Drawing and
Water Color.

CHARLES ROSCOE SWINEFORD *B.S.*
Associate Professor of Kinematics.

OTTO LOUIS ROBINSON *B.S., M.E.*
Associate Professor of Fire Protection Engineer-
ing.
Acacia, Salamander.

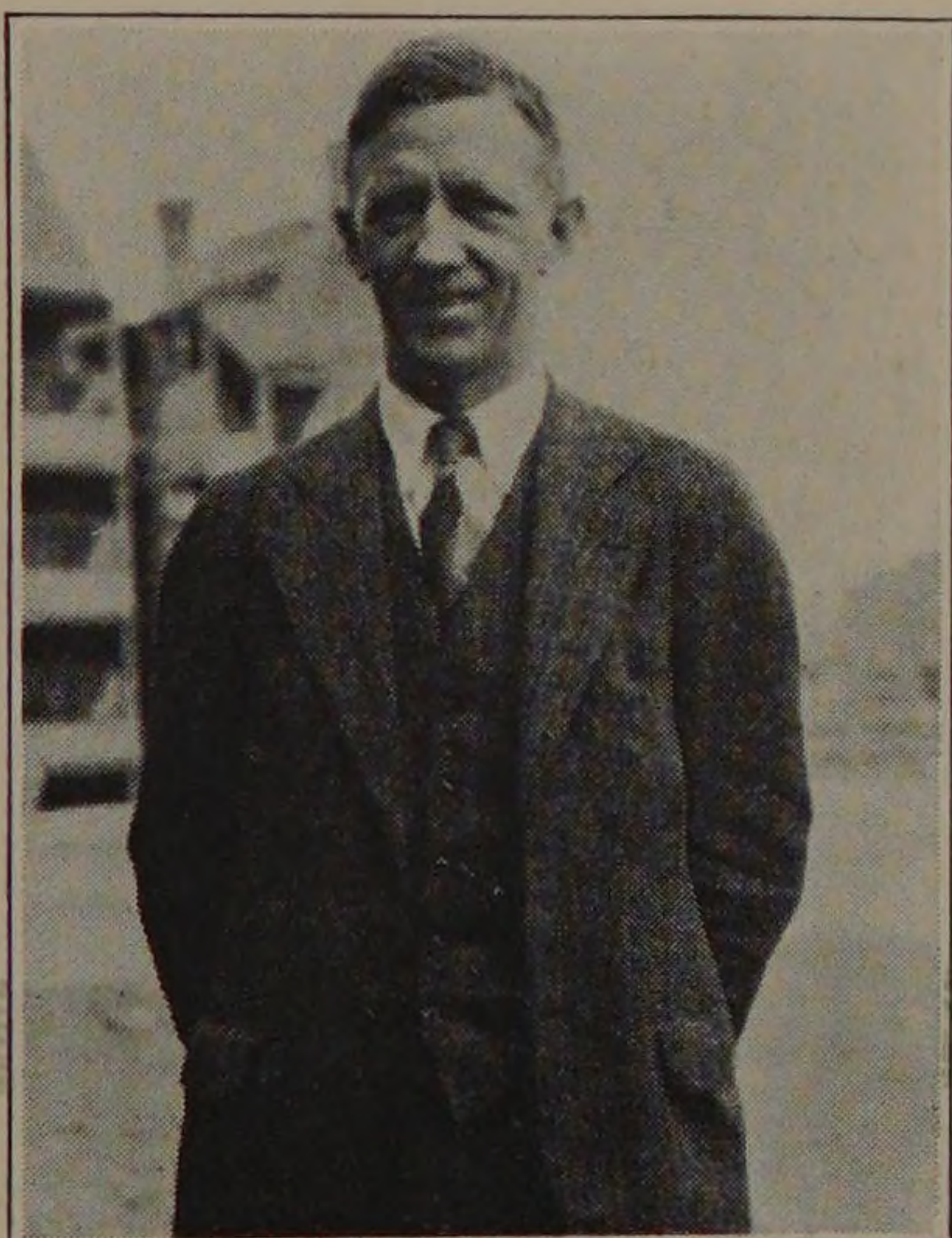
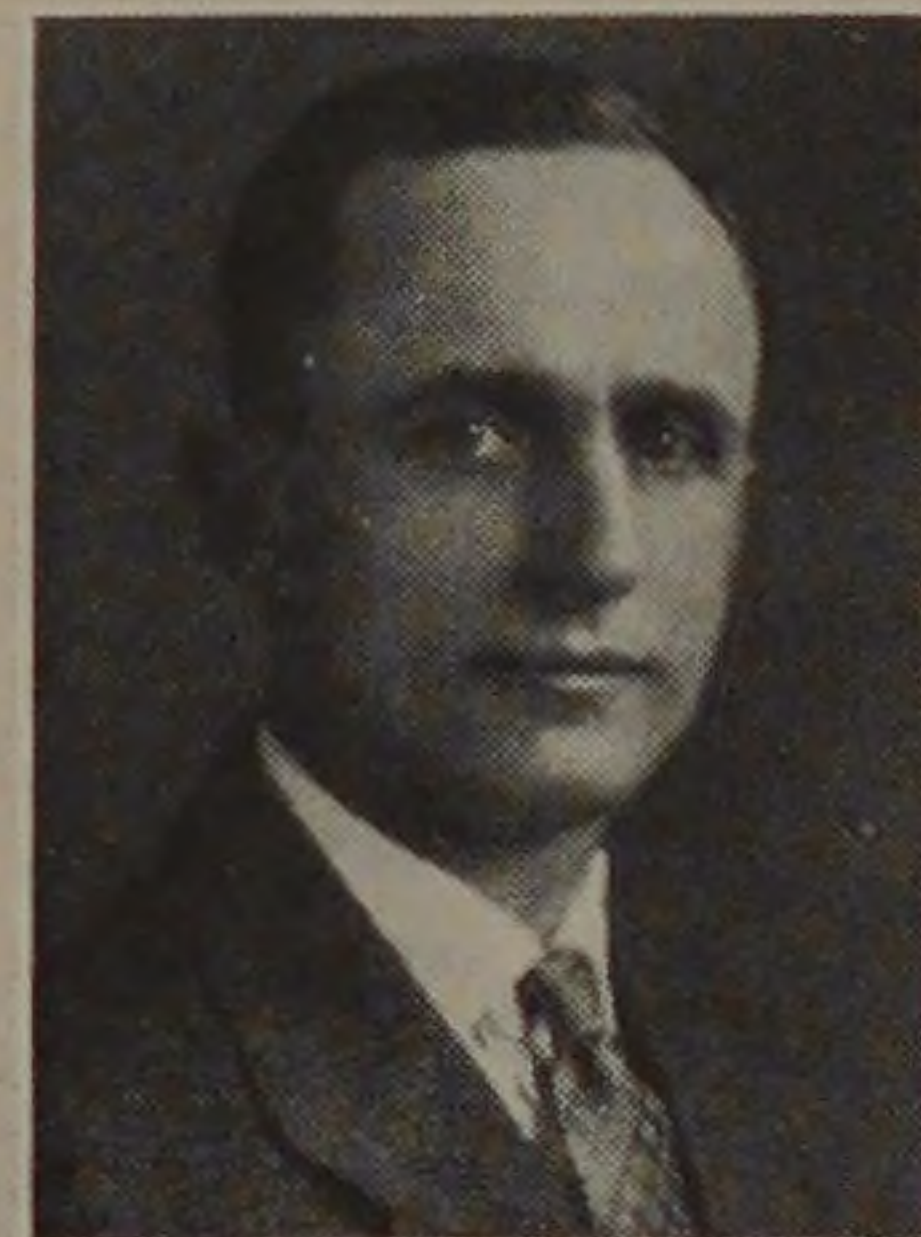
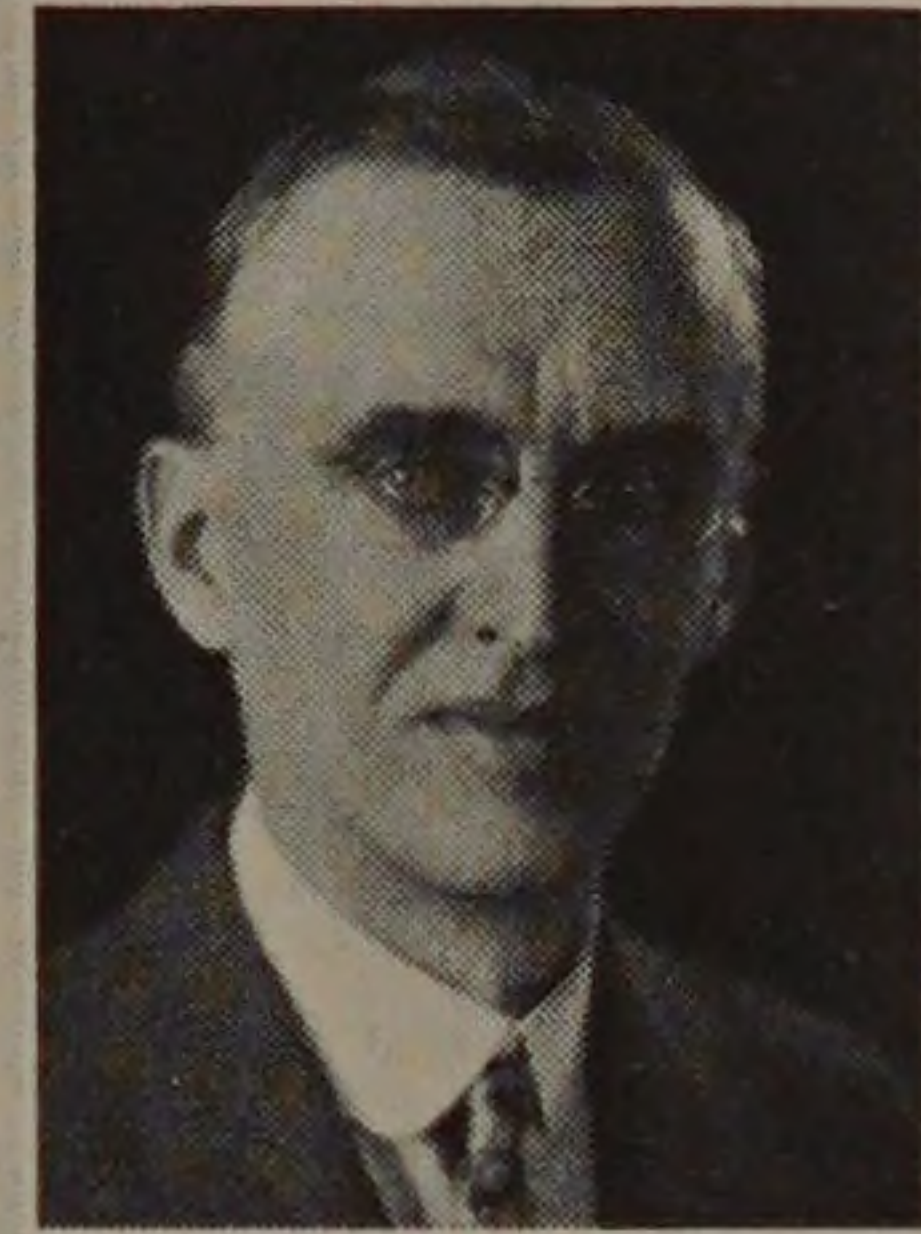
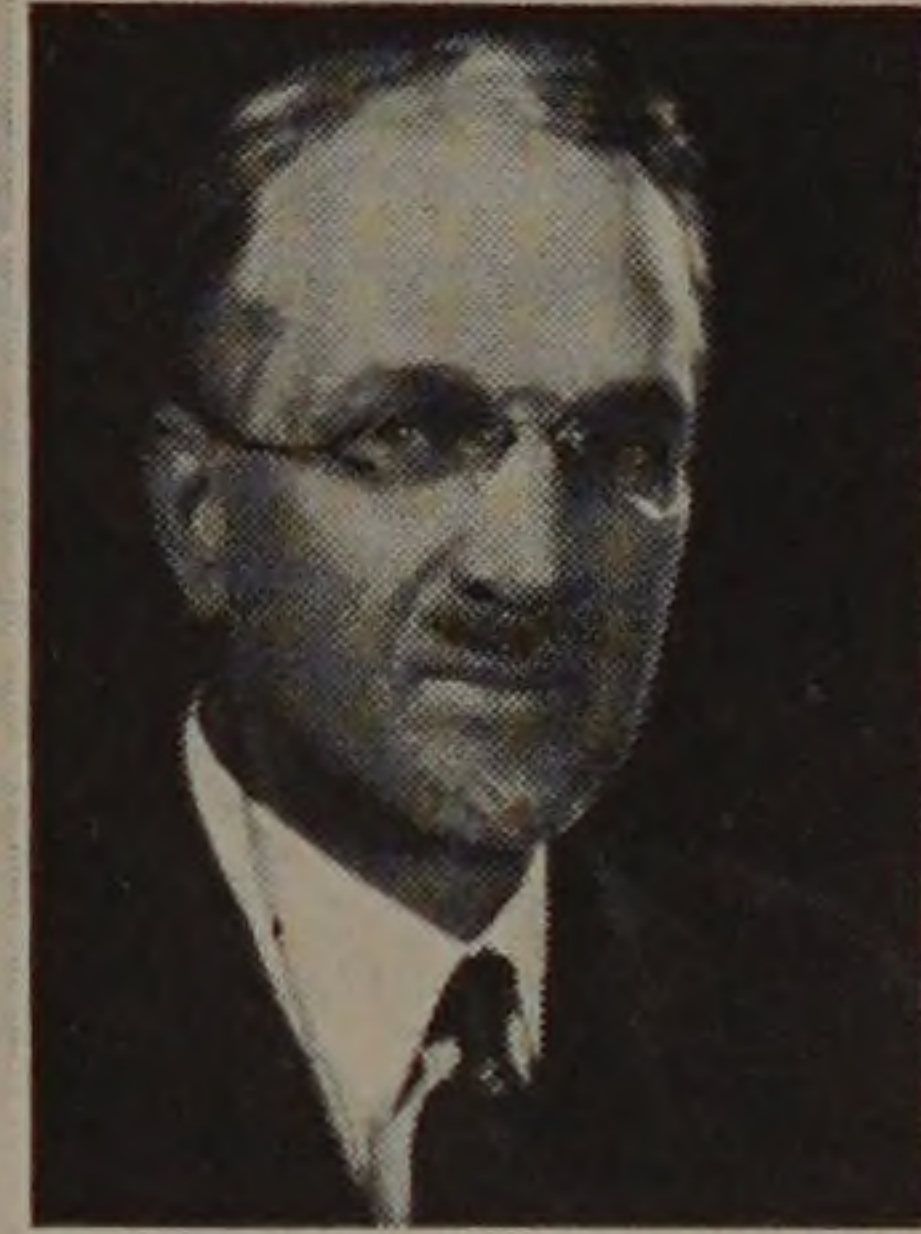
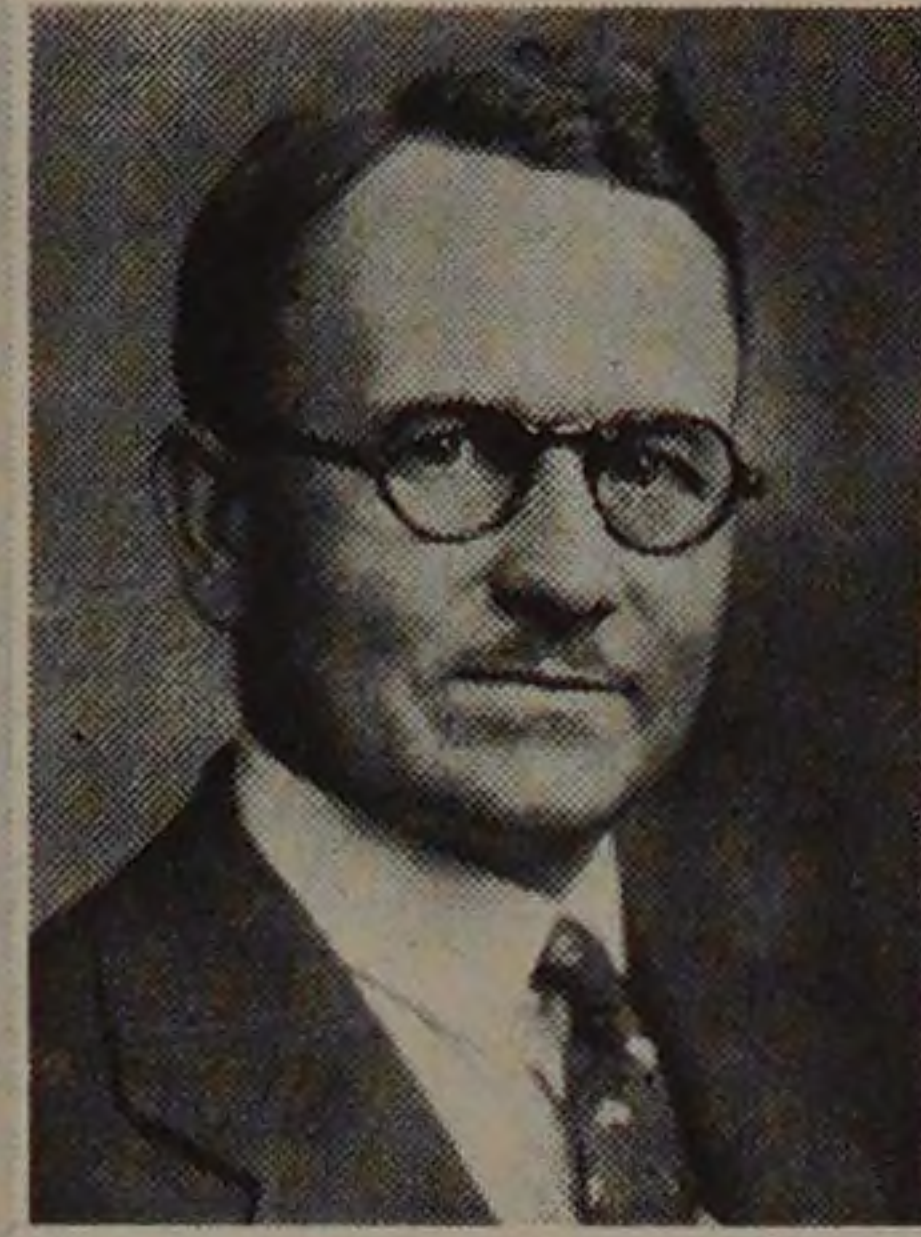
ROE LOOMIS STEVENS *B.S.*
Associate Professor of Bridge and Structural
Engineering.
Honorary member of Chi Epsilon.

WALTER HENDRICKS *A.B.*
Associate Professor of English.
Phi Delta Theta, Phi Beta Kappa, Sphinx.

RALPH W. HAMMETT *B.S., A.M.*
Associate Professor of Architectural History.

STANTON EDWIN WINSTON *A.B., B.S., A.M.*
Associate Professor of Kinematics.

WILLIAM WHITE COLVERT *A.B., A.M.*
Associate Professor of Physics.
Sigma Xi.



"Wally" the News' office boy. Without his help the News would be rather a "tin horn" publication.