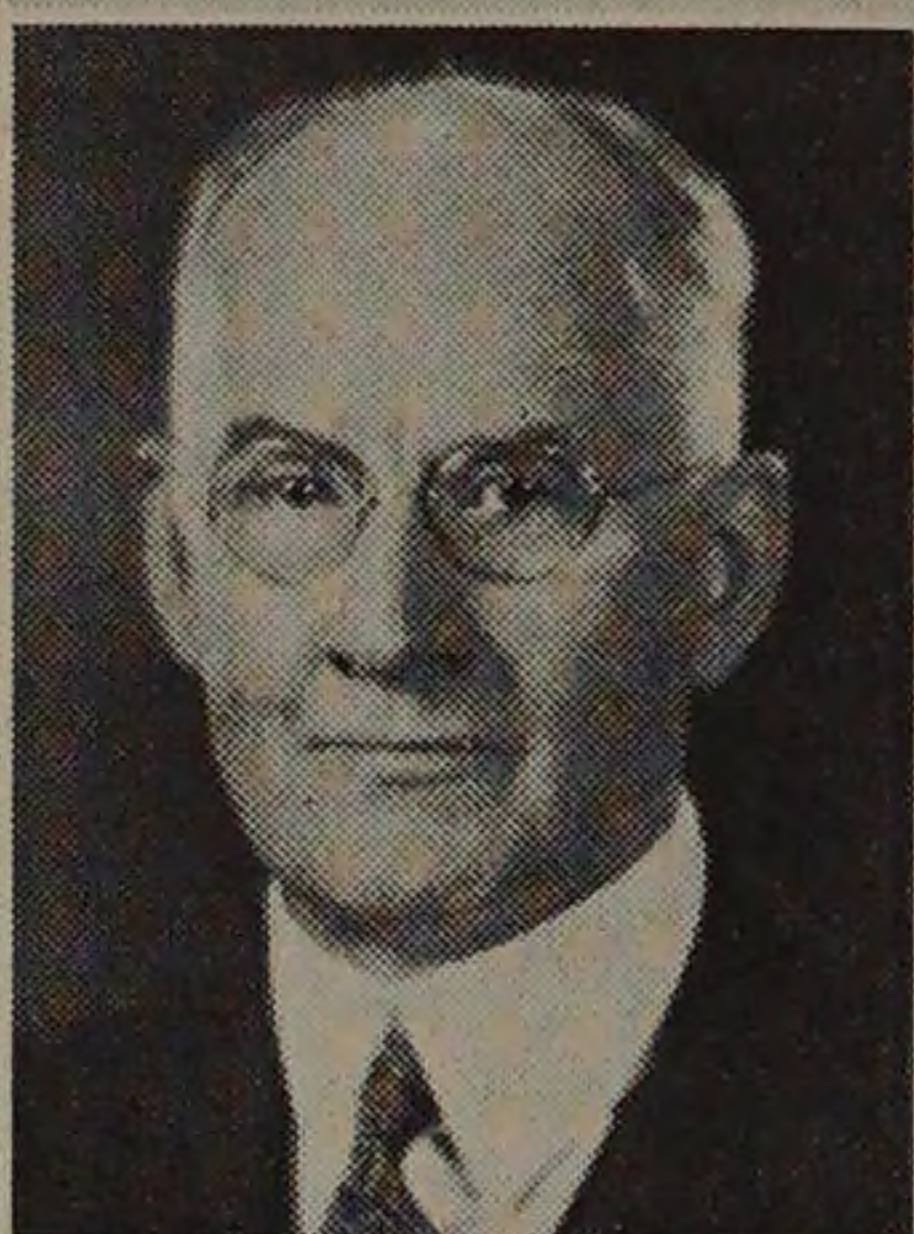
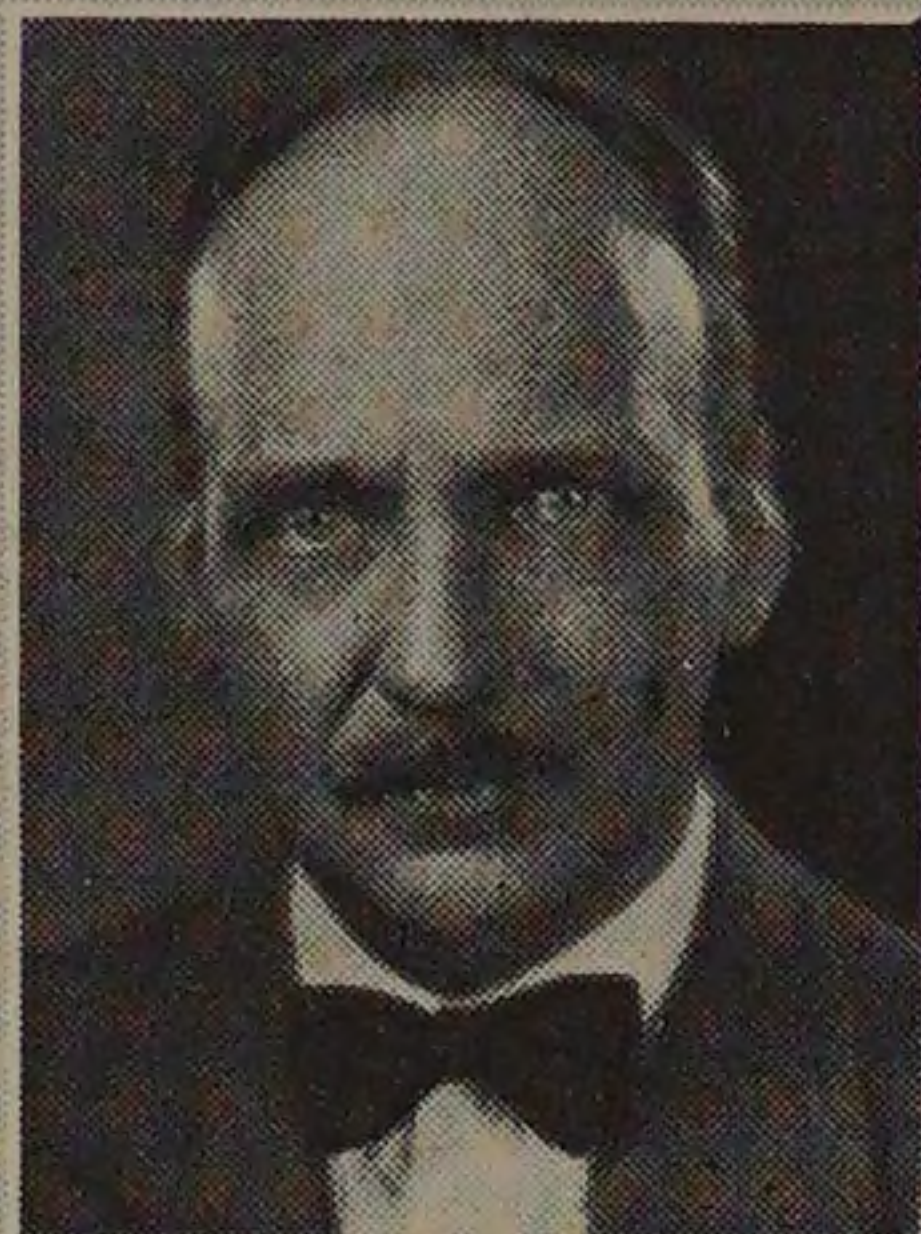




DAVID PENN MORETON *B.S., E.E.*
Associate Professor of Direct and Alternating
Current Machinery.
Sigma Kappa Delta, Tau Beta Pi, Eta Kappa Nu.

BENJAMIN BALL FREUD *Ph.D., Ch.E.*
Associate Professor of Physical Chemistry.
Phi Beta Kappa, Sigma Xi.



CHARLES AUSTIN TIBBALS, JR. *A.B., A.M., Ph.D.*
Associate Professor of Analytical Chemistry.
Phi Gamma Delta, Phi Lambda Upsilon, Sigma
Xi, Honorary member of Triangle.

OLIVER CHARLES CLIFFORD *A.B., Ph.D.*
Associate Professor of Electrical Engineering.
Sigma Xi.



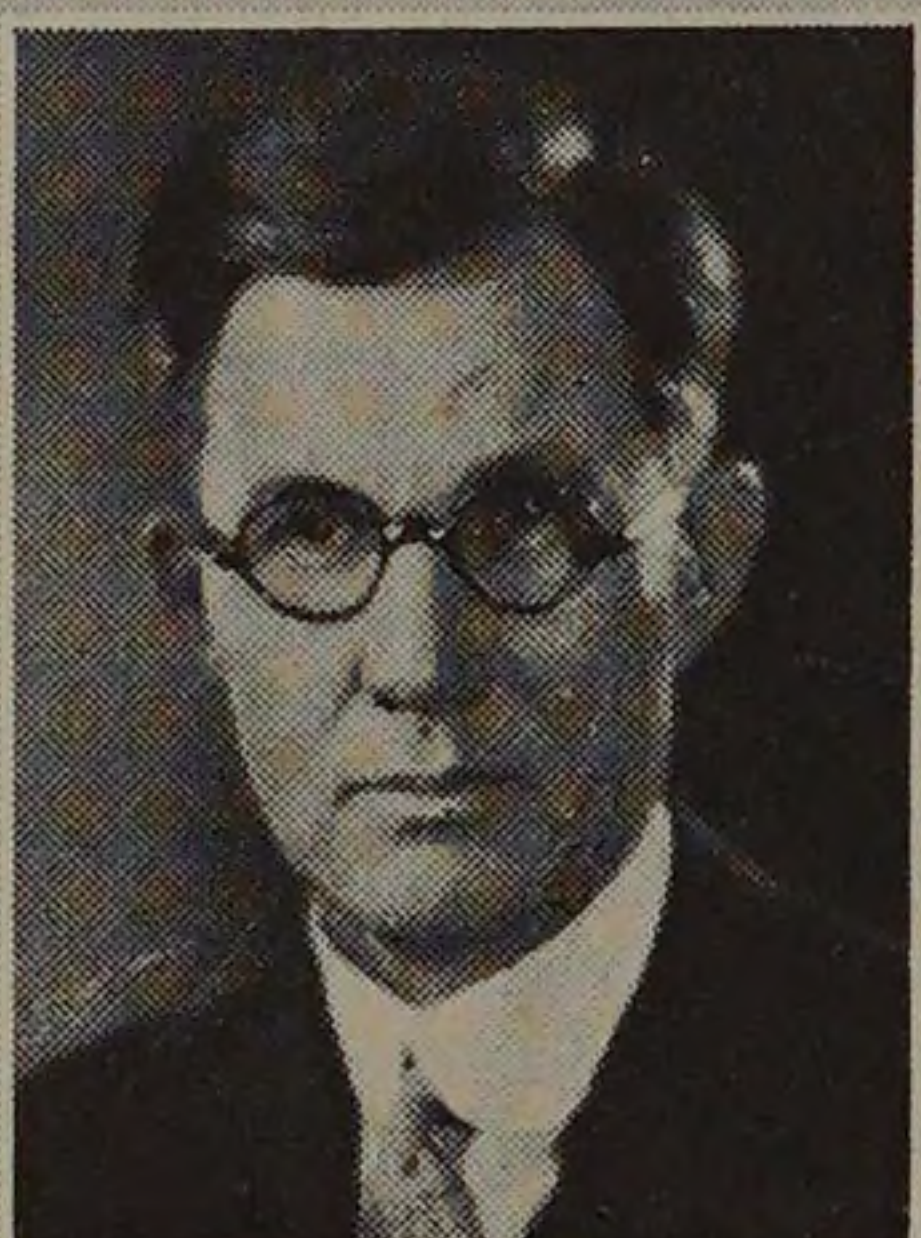
HENRY LEOPOLD NACHMAN *B.S., M.E.*
Associate Professor of Thermodynamics.
Phi Pi Phi, Tau Beta Pi.

DANIEL ROESCH *B.S., M.E.*
Associate Professor of Automotive Engineering.
Phi Pi Phi, Tau Beta Pi, Pi Tau Sigma.



EDWIN STEPHEN LIBBY *B.S., M.E.*
Associate Professor of Experimental Engineering.
Sigma Kappa Delta, Tau Beta Pi, Pi Tau Sigma.

JAMES CLINTON PEEBLES *B.S., E.E., M.M.E.*
Associate Professor of Experimental Engineering.
Sigma Kappa Delta, Sigma Xi, Gamma Alpha.
Tau Beta Pi, Pi Tau Sigma, Sphinx.



PHILIP CONRAD HUNTLY *B.C.E.*
Associate Professor of Experimental Engineering.
Triangle, Sigma Xi, Pi Tau Sigma, Chi Epsilon.

EUGENE EDWARD GILL *A.M., Ph.B., Ph.D.*
Associate Professor of General Chemistry.
Phi Beta Kappa.

D. P. of electrical fame. Although the rigor of junior "juice" oft causes hard feeling everything is forgiven and forgotten during the senior inspection trips.

