

EARL H. REED, JR. *S.B.*
Professor of Architecture, and Head of the Department.
Delta Kappa Epsilon.

CLYDE BARNES COOPER *A.M., Ph.D.*
Professor of English, and Head of the Department.

WALLACE BRUCE AMSBARY
Professorial Lecturer in General Literature.

JOHN EDWIN SNOW *B.S., A.M., M.S., E.E.*
Professor of Electric Power Production.
Eta Kappa Nu.

MELVILLE BAKER WELLS *B.C.E., C.E.*
Professor of Bridge and Structural Engineering.
Phi Delta Theta, Tau Beta Pi, Honorary member of Chi Epsilon.

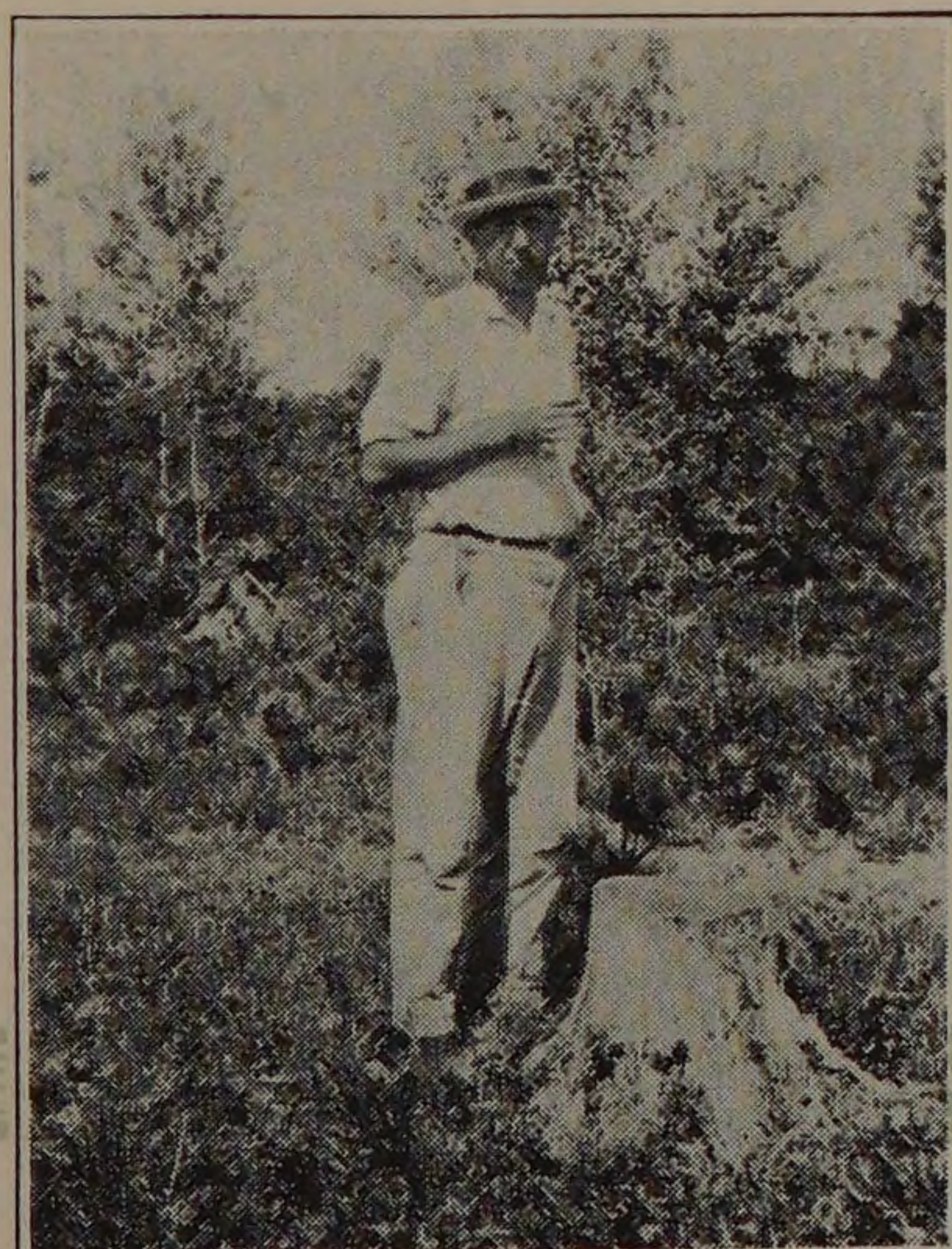
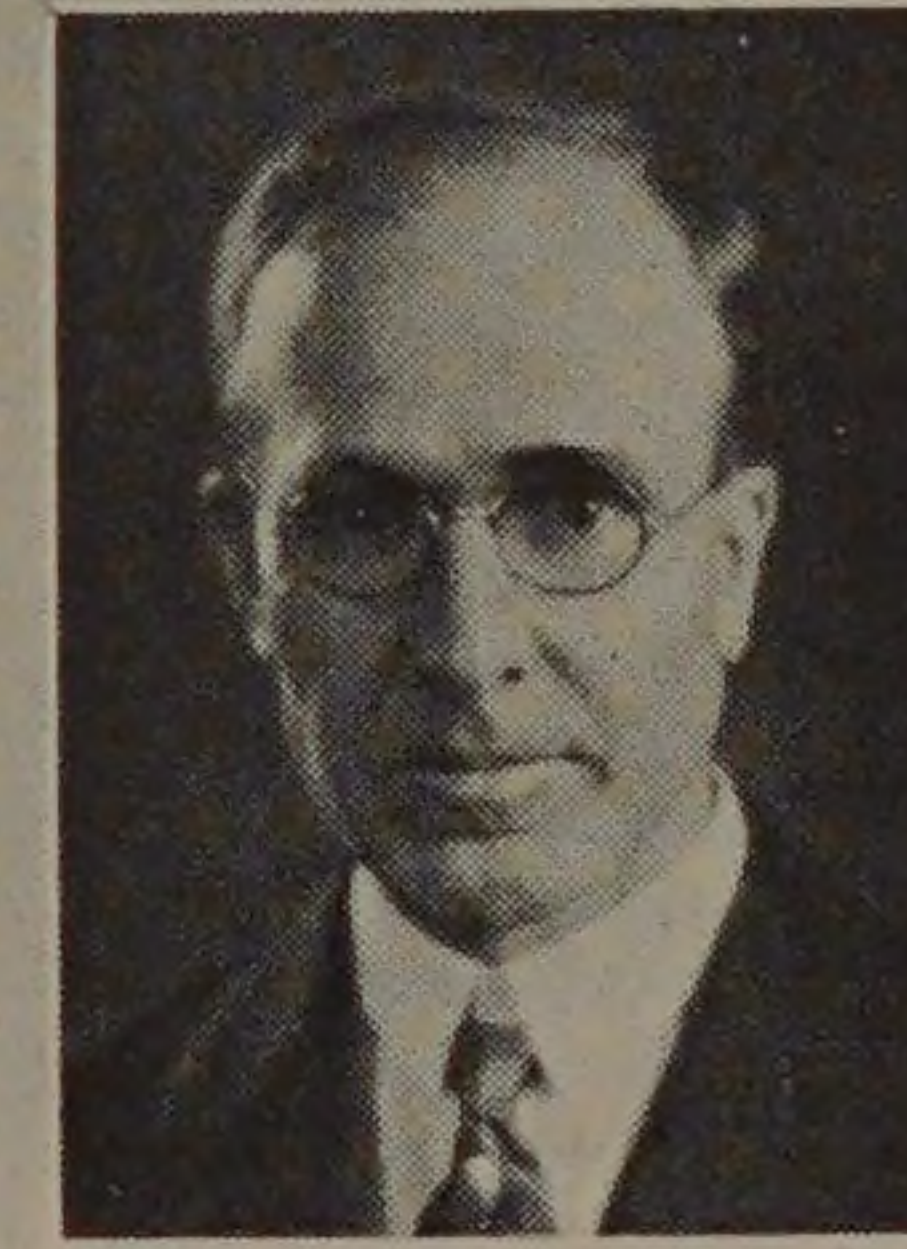
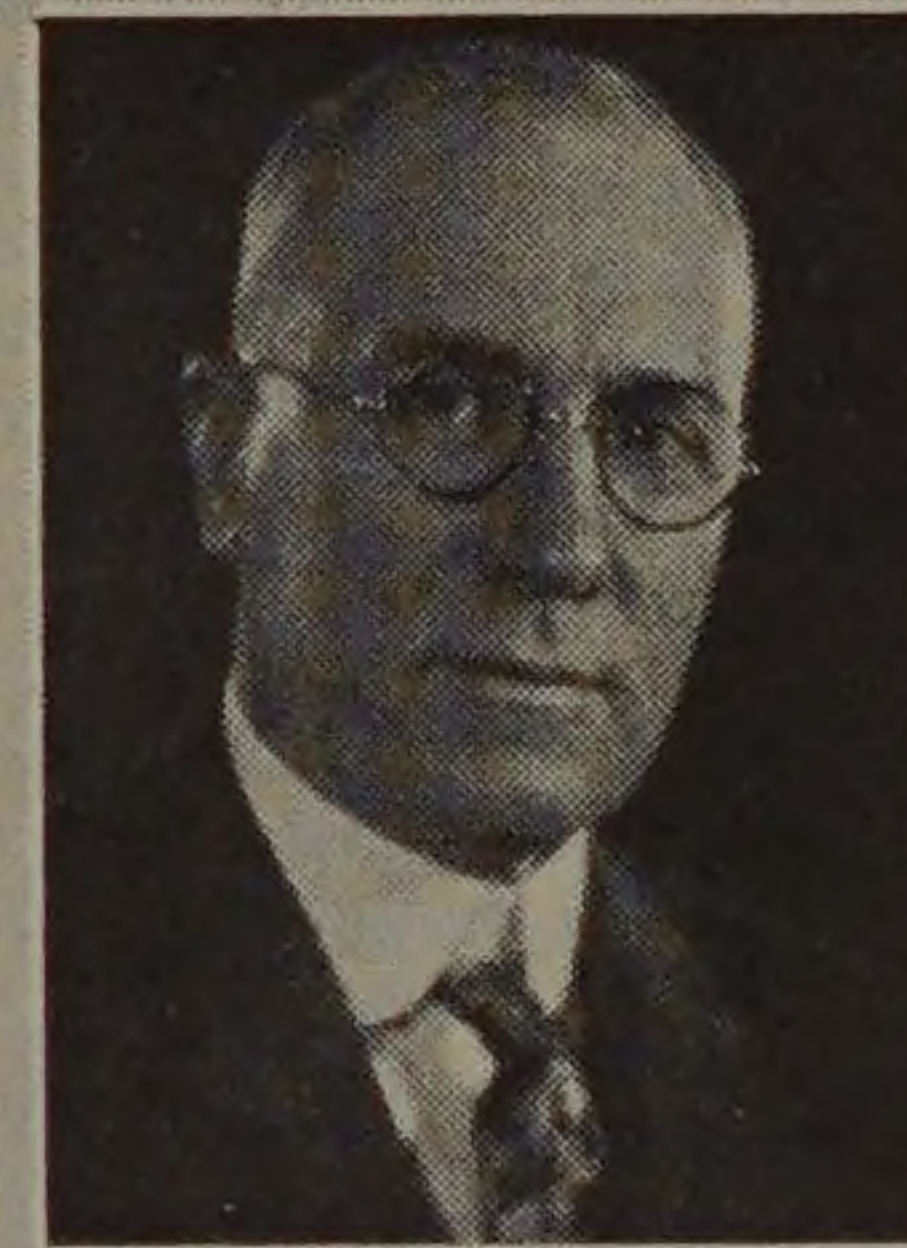
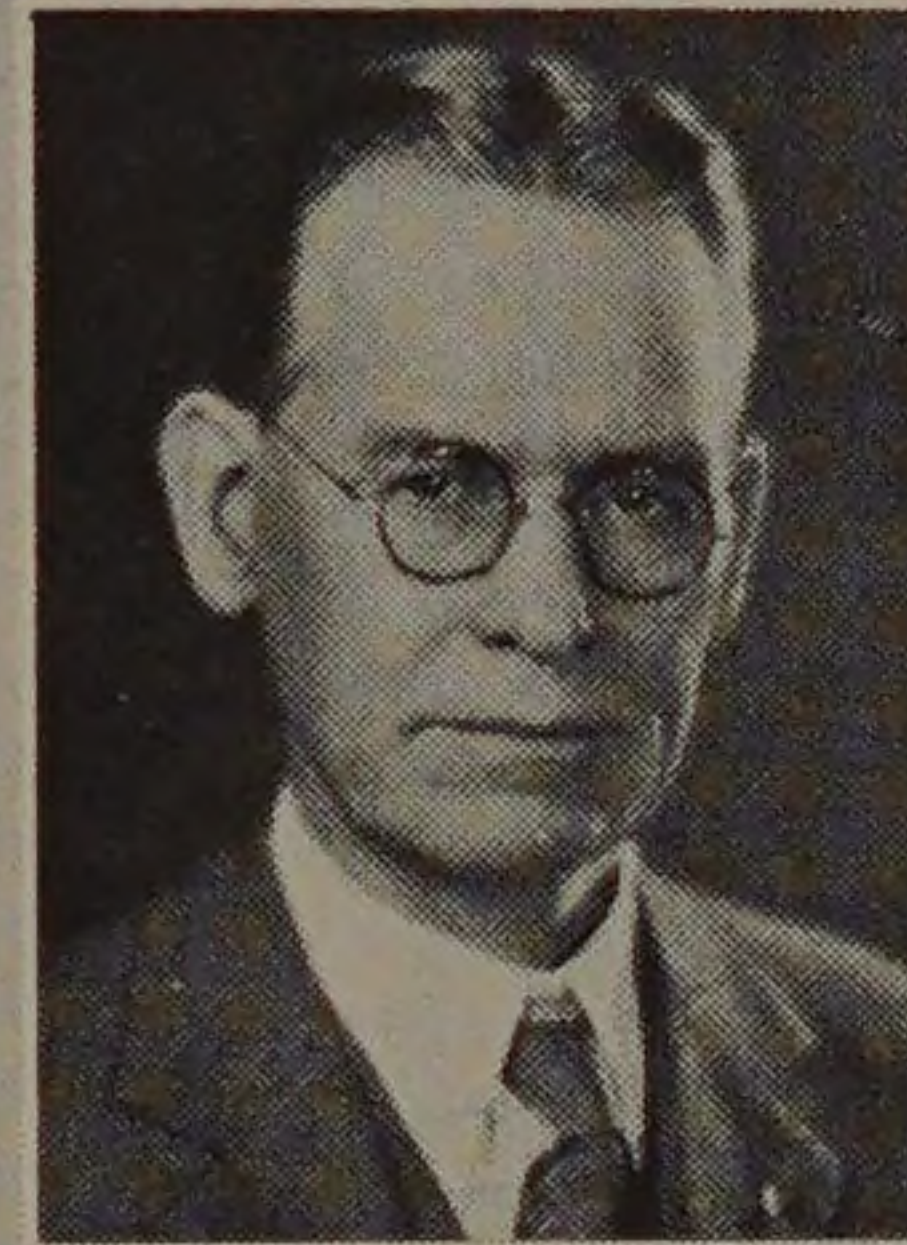
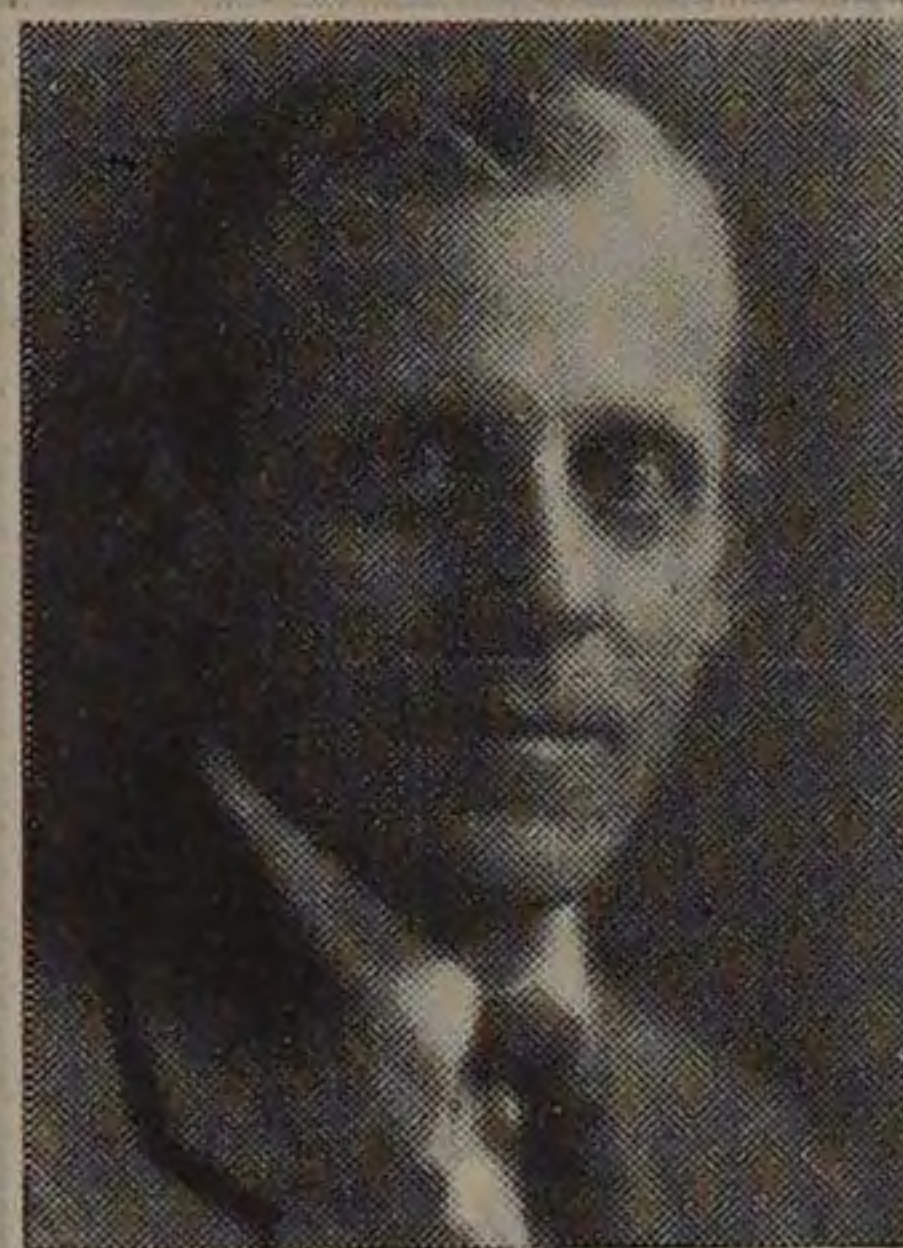
ROBERT VALLETTE PERRY *B.S., M.E.*
Professor of Machine Design, and Director of Evening Classes.
Theta Xi, Tau Beta Pi.

JOHN FRANCIS McNAMARA *B.S., M.D.*
Medical Advisor and Examining Physician.
Kappa Psi.

NELL STEELE
Librarian.

THOMAS EATON DOUBT *B.S., M.A., Ph.D.*
Associate Professor of Physics.
Sigma Xi.

CHARLES WILBUR LEIGH *B.S.*
Associate Professor of Mechanics.
Phi Gamma Delta, Tau Beta Pi, Sigma Kappa Delta.



Grif up a stump. Not exactly but at least the stump is there and so is Grif. We're going to wait around a bit to see what happens.