

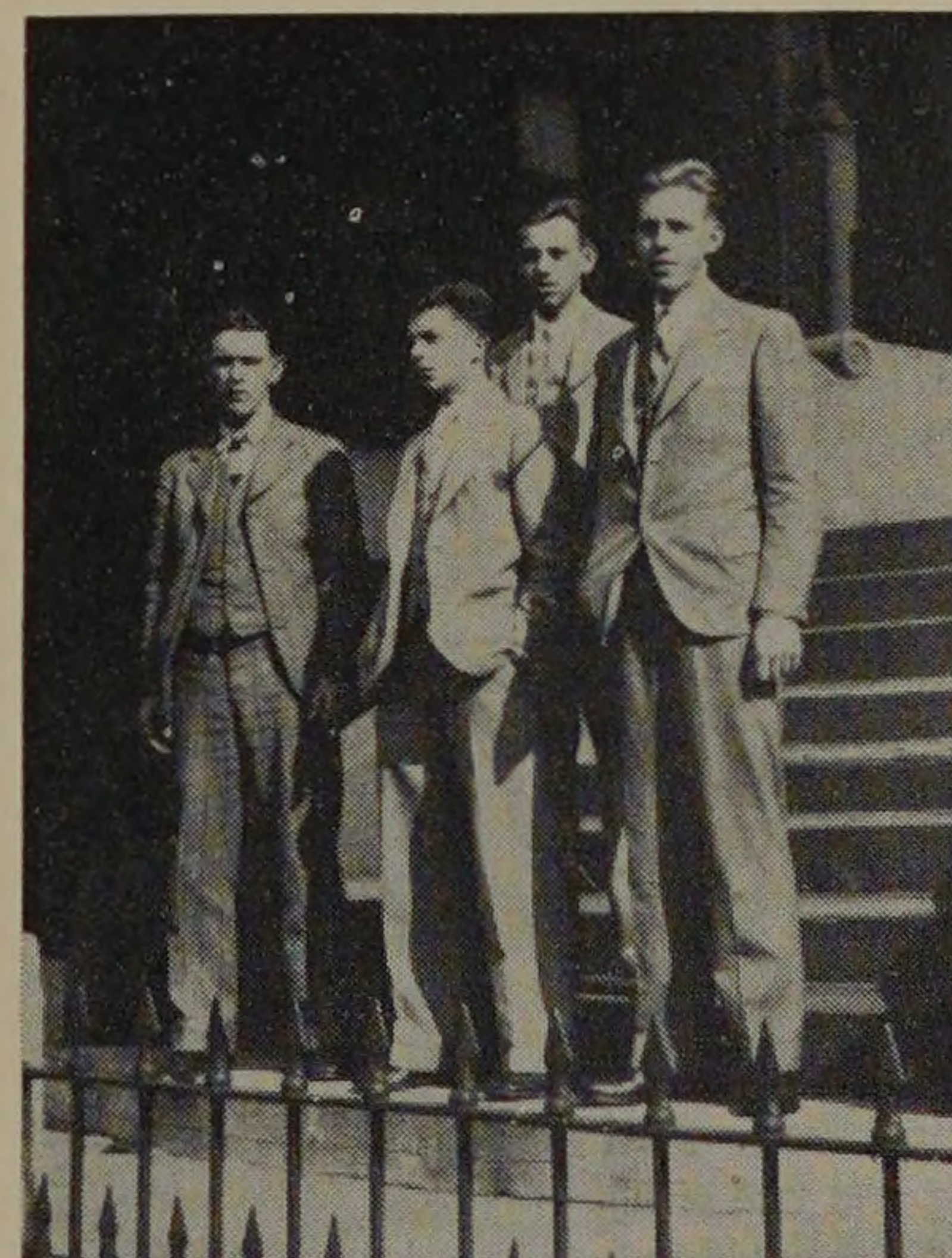


Top Row—GUSTAFSON, KLEINHAUS, PHELPS, CUMMING, BATES, TUCKER, GRAF, MCKINNIE.
 Second Row—JERVIS, BALDWIN, KERNAN, LARSON, BROWN, HEALY, STURM.
 Third Row—HENSON, MCGUIRE, MCALEAR, SUMMERVILLE, NISSEN, RANSEL, BUTTERWORTH, JOSEPHSON
 Bottom Row—SCHUELER, HOLIN, COURTNEY, BEAL, ISHMAEL, U'REN, MALM, ASTE.

SOCIAL CALENDAR

| | |
|---|-------------|
| RUSHING DANCE | October 19 |
| PLEDGE DINNER | October 20 |
| "DOC" WIELAND'S ANNUAL BANQUET | November 19 |
| DINNER AT GAMMA ALPHA CHAPTER | December 5 |
| ANNUAL "DELT" PROM | February 24 |
| JOINT NORTHERN AND WESTERN DIVISION CONFERENCE BANQUET | February 25 |
| SPRING INFORMAL DANCE | April .. |
| DINNER, GAMMA ALPHA CHAPTER | April .. |
| CHAPTER ANNIVERSARY PARTY | May 10 |
| FAREWELL DANCE | June .. |

Hail to the Frosh! Although they are not exactly on the fence, they do look undecided about something. What is it, fellows, an algebra quiz or a blonde?



Two Hundred Nineteen