



Standing—HAEGELE, NATELLA, MANSKE, HOTCHKIN, WINDBIGLER, LARSON, FENSTERLE, BERNHARD, OLSON, HAFNER, ESCOTT, SITZLER, WILSON, GRAMER, SIEBERT, JAMES.
Seated—BRADY, EVERLY, VANDERVELDE, EHRMEYER, HELLER, LUETH, HINDMAN, THOMAS, BOYNTON, YOUNG, DAHLGREN.

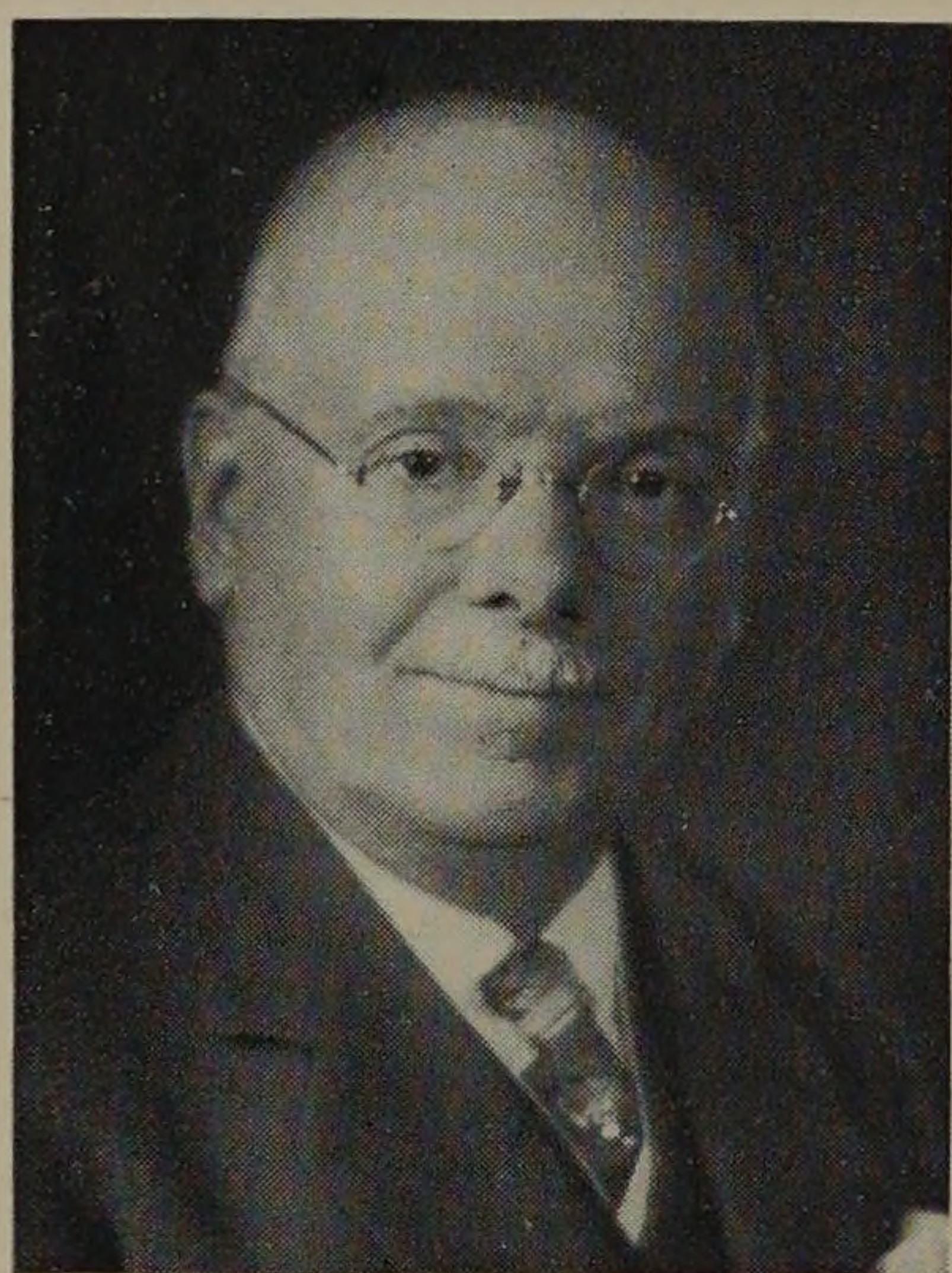
GLEE CLUB

DR. DANIEL PROTHEROE . . . *Leader*

The club started the year in much better voice than was expected so early in the season. In fact, many of the members must have smoked "Luckies" all summer in preparation for it.

The Glee Club feels that the last season has shown much improvement over the previous years, and also that it is keeping up its part in the increase in quality being shown yearly by the musical clubs at Armour. There seems to be no doubt that this increase is not a peak, but merely a step upward along the road over which the clubs of the years to come may travel to reach new heights. Too much

credit cannot be given to Dr. Protheroe for his part. He has been invaluable, and we take great pleasure in thanking him for his work with us, his kindness, and wit, and above all his wonderful ability which has put us where we are.



The Glee Club has been fortunate for many years in being the only one of the four musical organizations with a matured and experienced conductor. Dr. Protheroe has a rich background of choral and glee club work upon which to call, and he is a well known composer of choral music. The work of the Glee Club shows the results that only an experienced hand may produce.