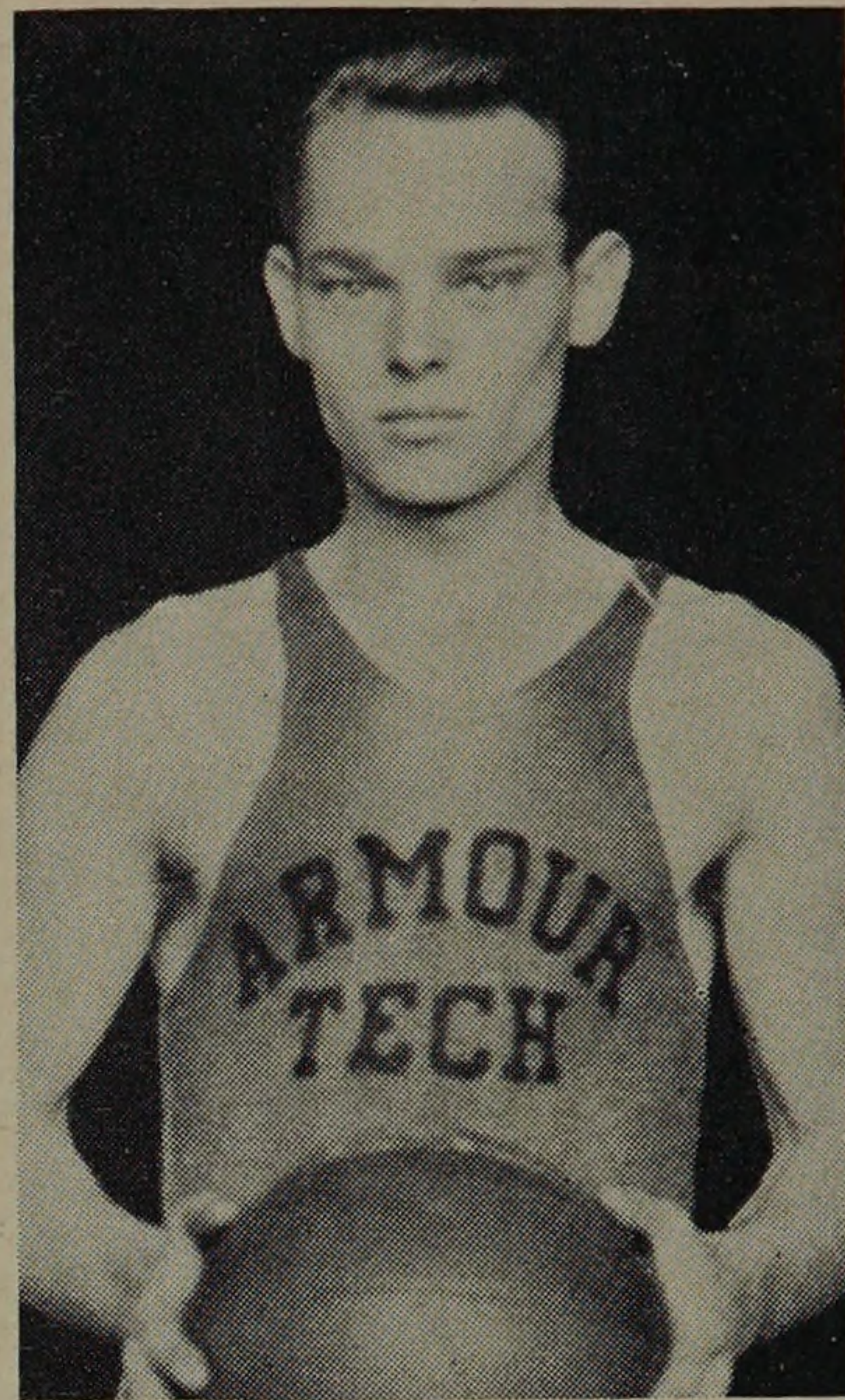




COACH MILTON ROMNEY

BASKETBALL

1927-28



CAPT. ERWIN W. BROCKMAN

MILTON ROMNEY	Coach
ERVIN W. BROCKMAN	Captain
GLENN O. VANDAVEER	Manager
CARL H. JOHNSON	Assistant Manager

With the return of three letter men around whom the team had to be built, Coach Romney made a plea for new material, and one of the largest squads ever reporting for basketball turned out. The letter men from last year were Captain Brockman, Augustine and Brumund.

After considerable drilling, the weeding out process was started with the result that a squad of twenty was picked to start the season. The squad this year was conspicuous in that it did not contain a forward who could be relied on to sink short shots consistently. This caused the dropping of several close games.

The squad ran into tough luck all season. Ex-Captain Augustine was lost to the team at the start of the season due to an attack of appendicitis. His absence was keenly felt as he was one of the best guards Armour has ever had,—a wonderful floor man, and absolutely sure on close shots.

Capt. Brockman, who alternated at center and guard, played a sterling game though he was handicapped throughout the season with an injured knee. Brumund, the remaining letter man, alternated at center and forward and played a consistent game all season.

As usual the mid-semester exams played havoc with the squad, nine men being declared ineligible. This left but nine men for the remainder of the season. In spite of this blow, much promising material was uncovered. Jervis, a freshman, was tried at guard and held his post throughout the season. He played the same style of game as Augustine and capably filled his place.



GLENN O. VANDAVEER