

FRANK MICHAEL KRATOKVIL *Chicago*
B.S. in Electrical Engineering
Varsity Track, 4; Cross Country, 1, 2, 4; Campus
Club; A. I. E. E.

HARRY LELAND KRIEGER *Millersburg, Ohio*
B.S. in Fire Protection Engineering
Triangle, Salamander, Pi Nu Epsilon
Band, 1, 2; Glee Club, 2; F. P. E. S.

JACOB HARRY LANDES *Brooklyn, N. Y.*
B.S. in Architecture
Rho Delta Rho
Interfraternity Basketball, 2, 3, 4; Interfraternity
Baseball, 2, 3, 4; A. A. S.

RICHARD KIRWAN LANGAN *Louisville*
B.S. in Fire Protection Engineering
Triangle, Tau Beta Pi, Salamander
Varsity Tennis, 2, 3, 4; F. P. E. S.

HAROLD EMMANUEL LARSON *Chicago*
B.S. in Electrical Engineering
Tau Beta Pi, Eta Kappa Nu
Engineering News Editor, Engineer, 4; Press Club;
Glee Club, 4; A. I. E. E.

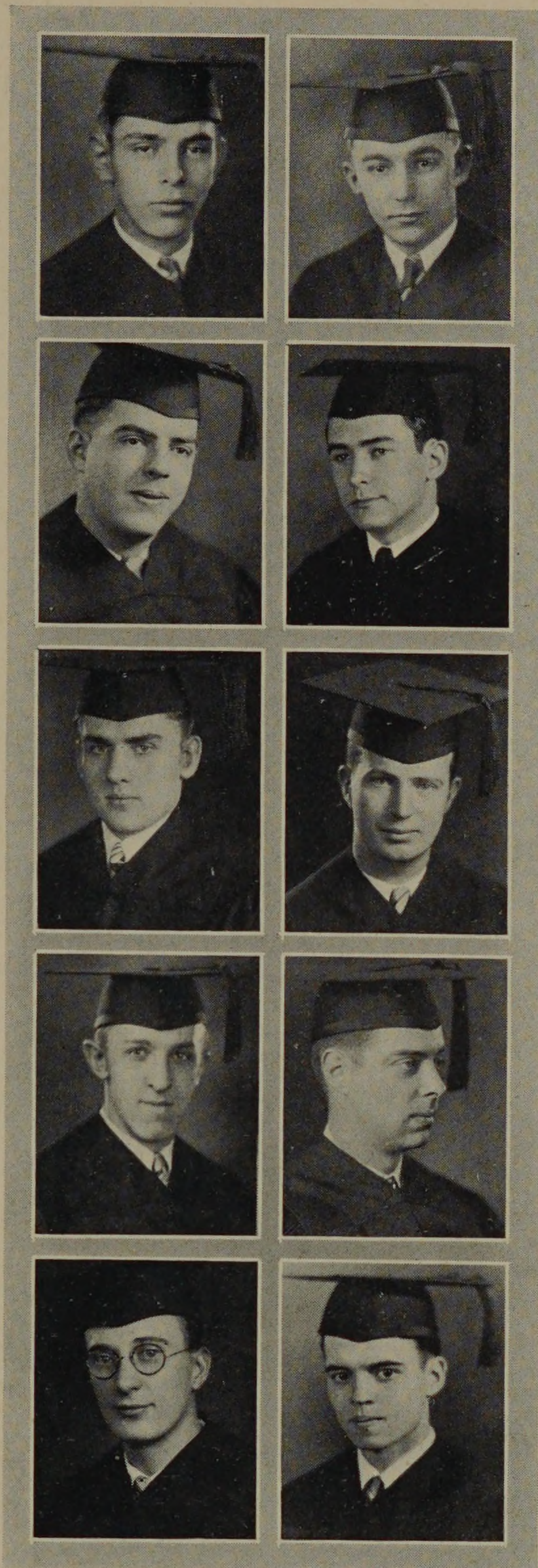
JOHN BALDWIN LODESKI *Oak Park, Ill.*
B.S. in Civil Engineering
Chi Epsilon
Glee Club, 3, 4; Rifle Club, 4; W. S. E.

CARL LEONARD LOHNER *Chicago*
B.S. in Mechanical Engineering
Pi Tau Sigma
Press Club; A. S. M. E.

IRVING BECK LUETH *Chicago*
B.S. in Electrical Engineering
Tau Beta Pi, Eta Kappa Nu
Honorary Fraternity Council, 4; Glee Club, 4;
Campus Club; A. I. E. E.

Donald Chester McDougal *Chicago*
B.S. in Mechanical Engineering
Beta Psi
A. S. M. E.

HAROLD LOUIS McDOWELL *Chicago*
B.S. in Architecture
Triangle, Scarab
A. A. S.



"Stew" stoutly states that his handle was attached as a result of his slinging the "beef" at the Triangle House. His friends, however, do not wish his reputation to suffer from his extreme modesty.