

CLUBS

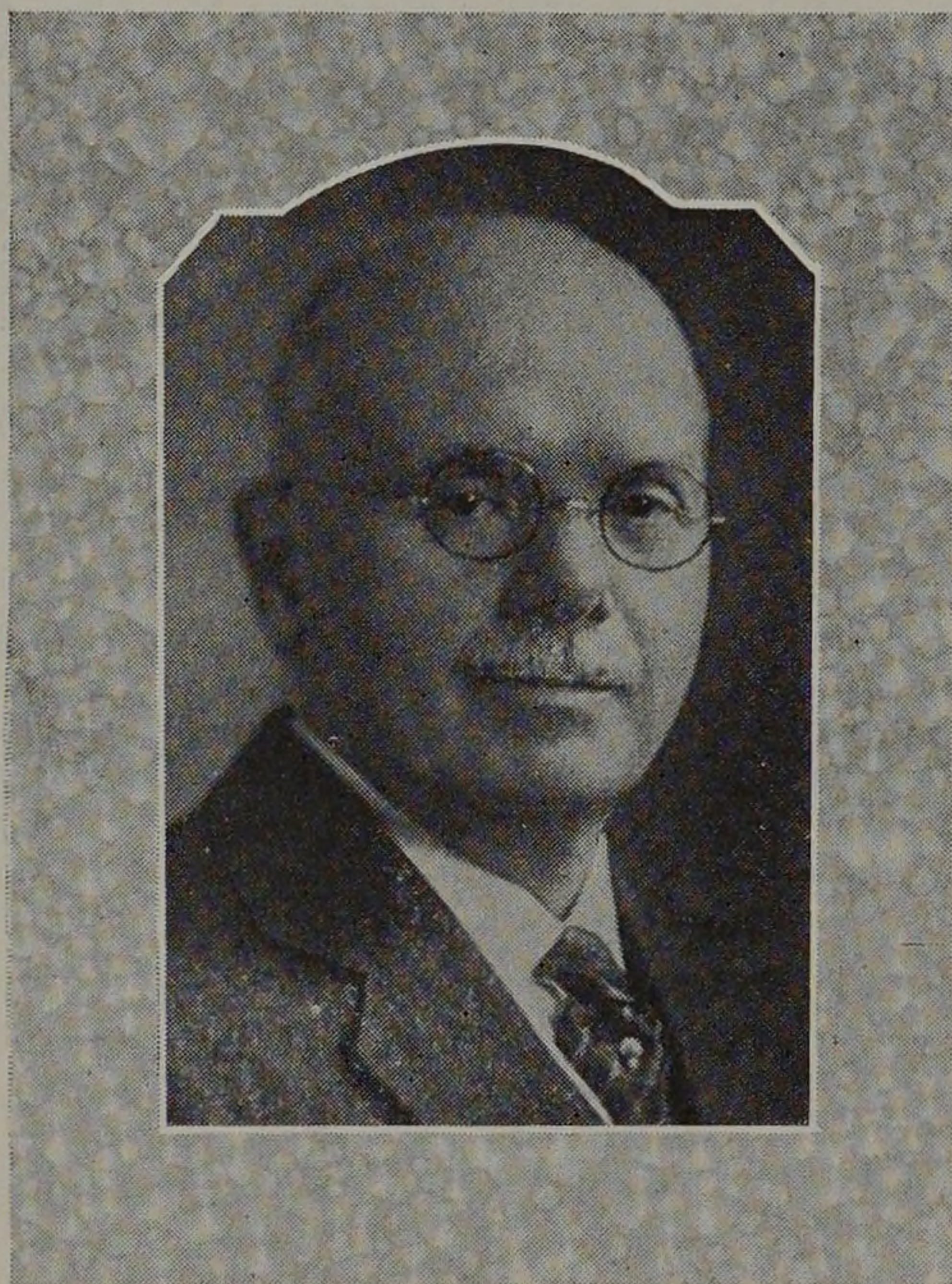
Armour Tech Musical Clubs

This organization has in part and within certain limits, accomplished the task it set itself at the beginning of the last school year. That task, briefly, was to create a more universal and a more intense interest in music and the various musical organizations at Armour; and to put the name of our Alma Mater on the musical map, so to speak, of college life. The first part of this undertaking has been accomplished with a higher degree of success than even the most optimistic had hoped for.

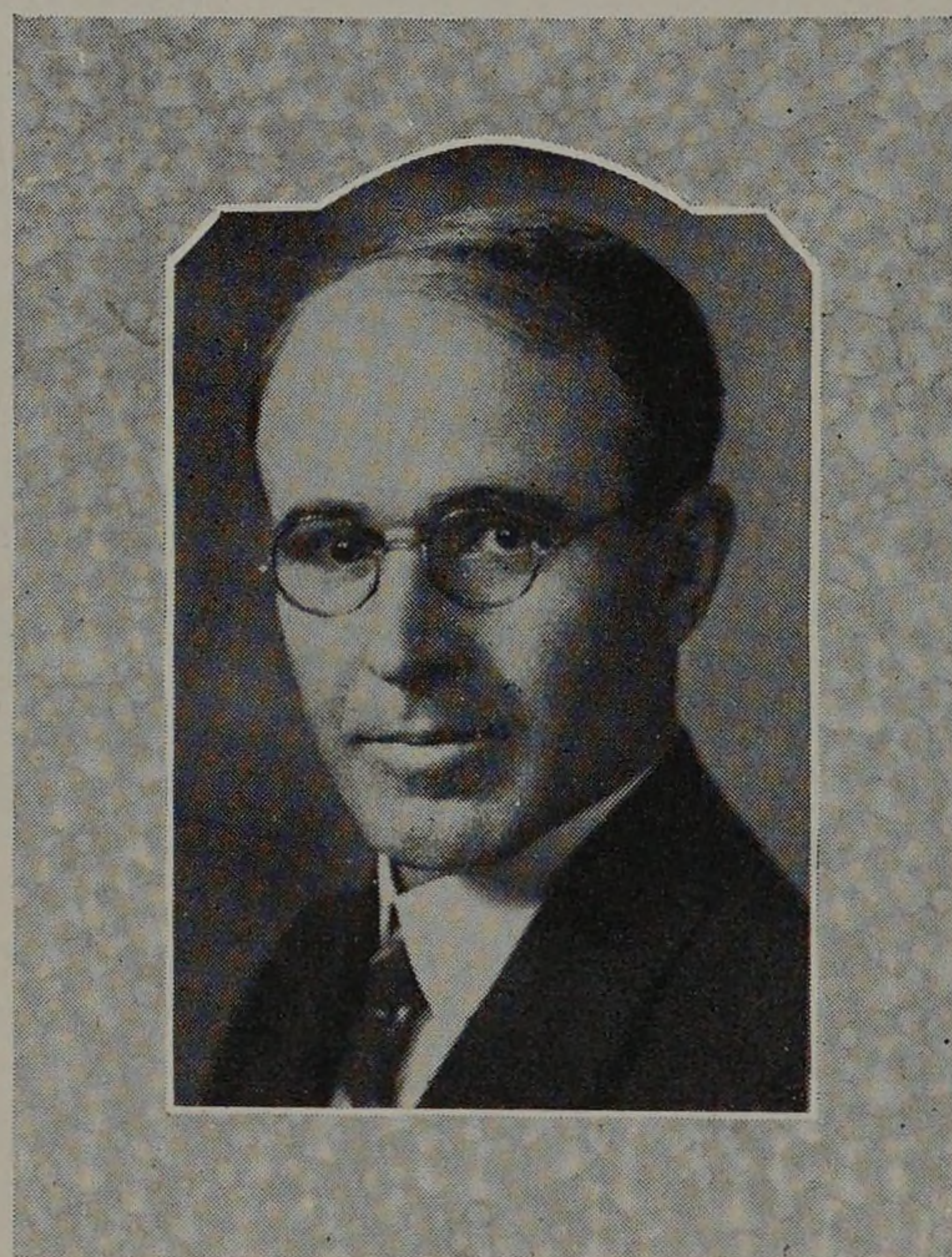
The first step, of course, was to get the Clubs before the student body. To this end, a series of concerts was planned and presented. After each concert, a growing interest was exhibited in the work of the Musical Clubs. Memberships in the various organizations increased and it no longer became necessary to constantly adjure delinquents with regard to attending rehearsals. The student body gradually realized that to belong to one of the musical clubs was an honor, and not a gym credit as it had so long been regarded.

The second step taken to incite public and individual interest was the founding of a musical Honorary Fraternity, to be known as Pi Nu Epsilon. Hitherto the engineers, the literary aspirants and the artists had all had their honorary organizations to inspire interest and energy in their particular non-curricula interests. However, the musically inclined have had no such inspiration. The founding of Pi Nu Epsilon has, we feel, filled this need. It has provided an objective and an incentive toward which the members of the Musical Clubs may strive.

The placing of the A. T. M. C. before a "foreign" public has not been completely successful, although many outside concerts were given. We feel that there will be time enough to accomplish this after we are well established on our own ground. However, the Musical Clubs look forward to the coming year with hopes that much will be achieved in the direction of bringing the clubs before the people outside of our own school.



DOCTOR PROTHEROE
Director



PROFESSOR LEIGH
Faculty Advisor