

ENGINEERING SOCIETIES

American Society of Mechanical Engineers

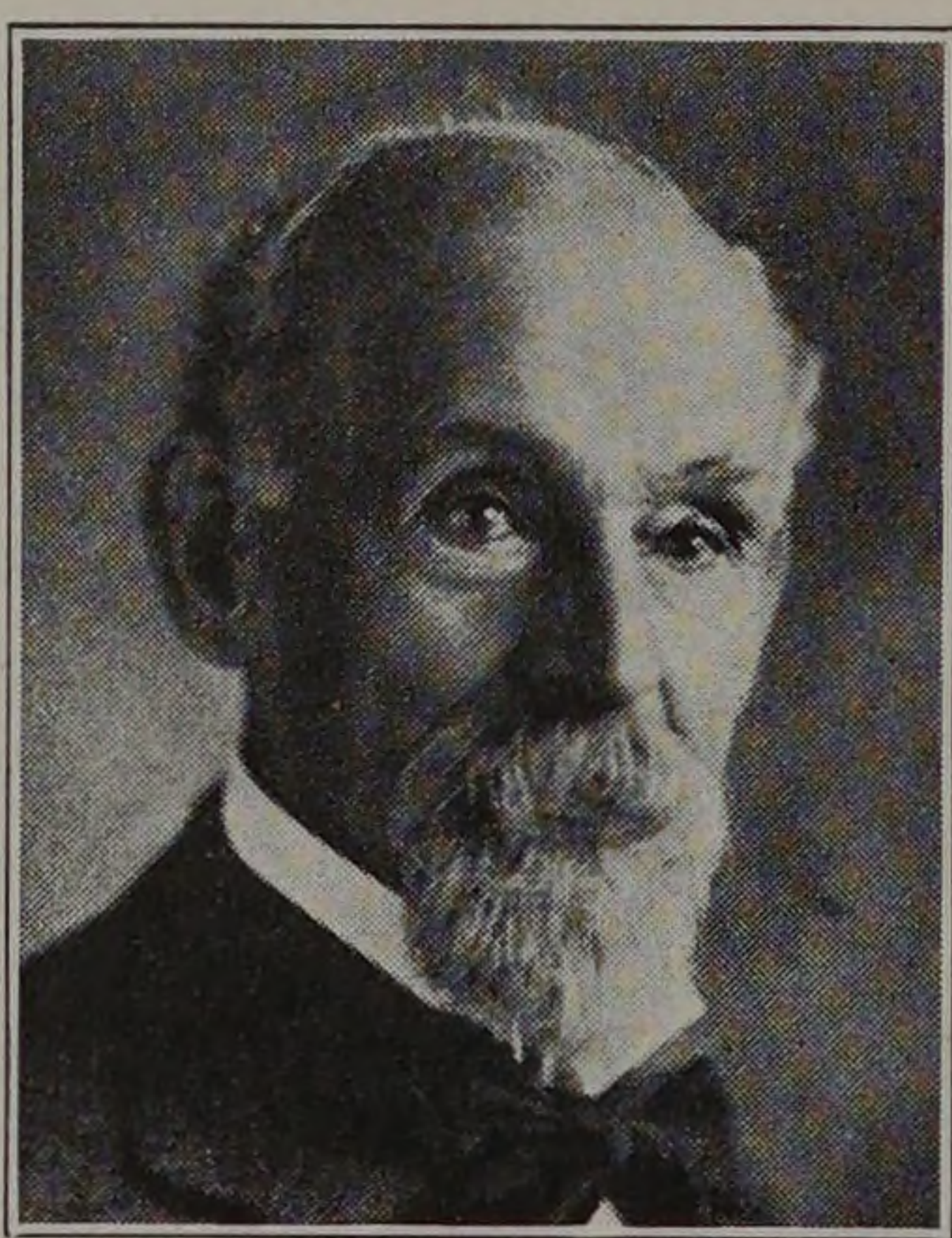
Armour Branch

Officers

K. FIGENBAUM	President
W. F. SCHROEDER	Vice-President
R. P. PETERSEN	Secretary
H. GEORGE	Treasurer
PROFESSOR G. F. GEBHARDT	Faculty Advisor

It was the beginning of an eventful year for the Armour Branch of the American Society of Mechanical Engineers when an assembly of almost fifty students gathered in Science Hall for the initial meeting. Mr. Figenbaum, the president, introduced our well known Professors Gebhardt, Peebles, Roesch and Huntly, who extended some advice as to the "whys and wherefores" of an A. S. M. E. branch to the new members. Much stress was laid on the fact that students must learn to express their thoughts. It is a well-known fact that mechanical engineers are doers of big things, but they also should be the type of men who are popular with the rest of the world.

The purpose of the society is to have as many student speakers as possible. However, owing to a capacity program, there was not sufficient time for many student speakers. Mr. J. C. Segeler, a senior, spoke before the society and gave a very interesting and well-presented talk on boiler efficiencies.



DR. J. A. BRASHEAR
work and did it well.

"Somewhere beneath the stars is work which you alone were meant to do. Never rest until you have found it."

Dr. John A. Brashear, Past-President of the American Society of Mechanical Engineers, devoted his entire life to perfect astronomical instruments and lenses so that he might disclose the serene beauties and mystical phenomena of the heavens to his fellow men.

The late Doctor was an expert mechanic and his early inventions were made in his spare time which he gave to his hobby. Today, we find that his instru-

ments dominate the majority of the observatories of the world. He found his