

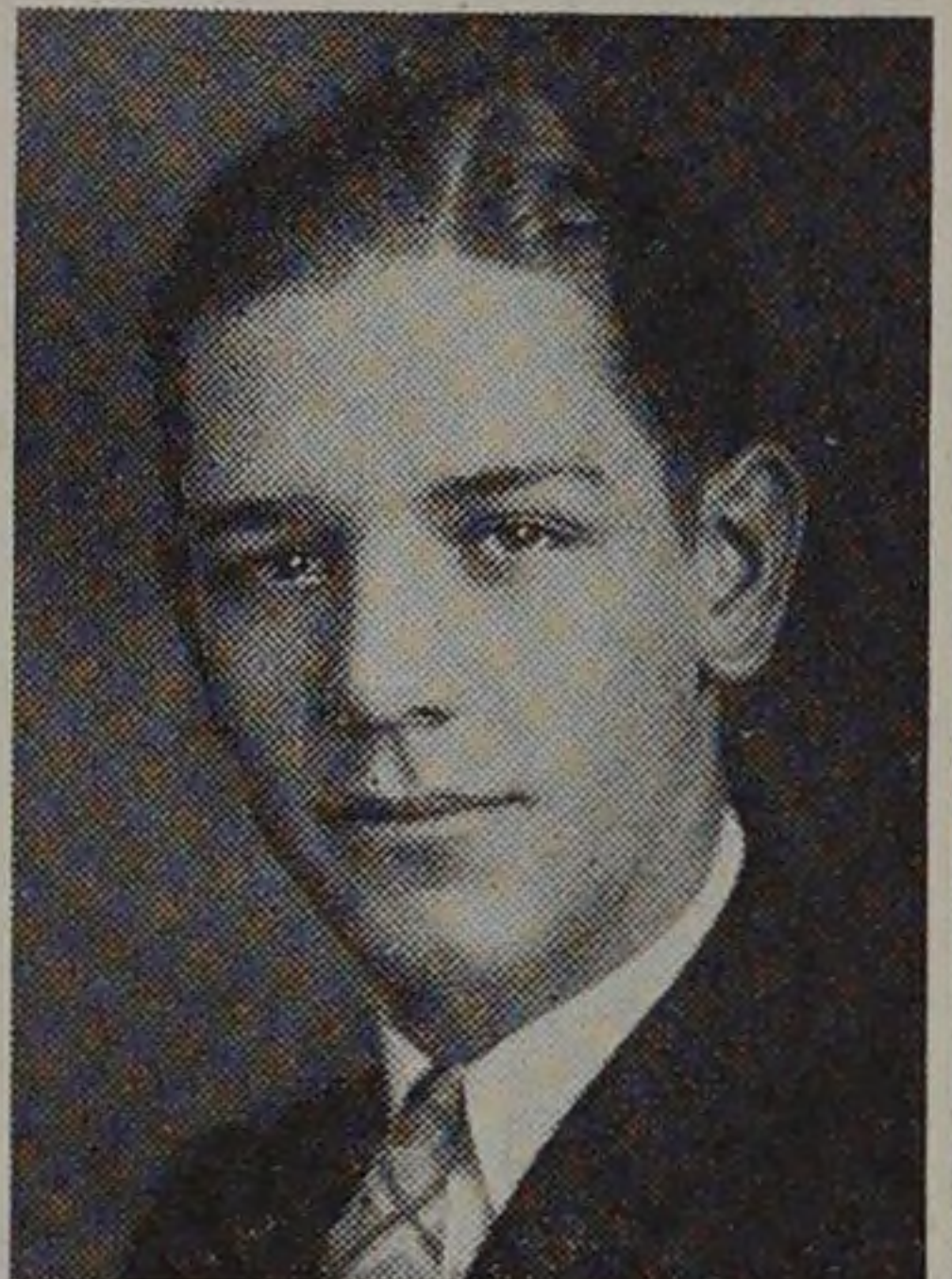
CLASSES



ARNOLD C. LINDEBERG, B. S. in F. P. E.  
Born March 26, 1904.  
Lane Technical High School.  
Phi Pi Phi.  
F. P. E. S.  
Jazz Orchestra, '23-'24; Wrestling, '24; Y.  
M. C. A.



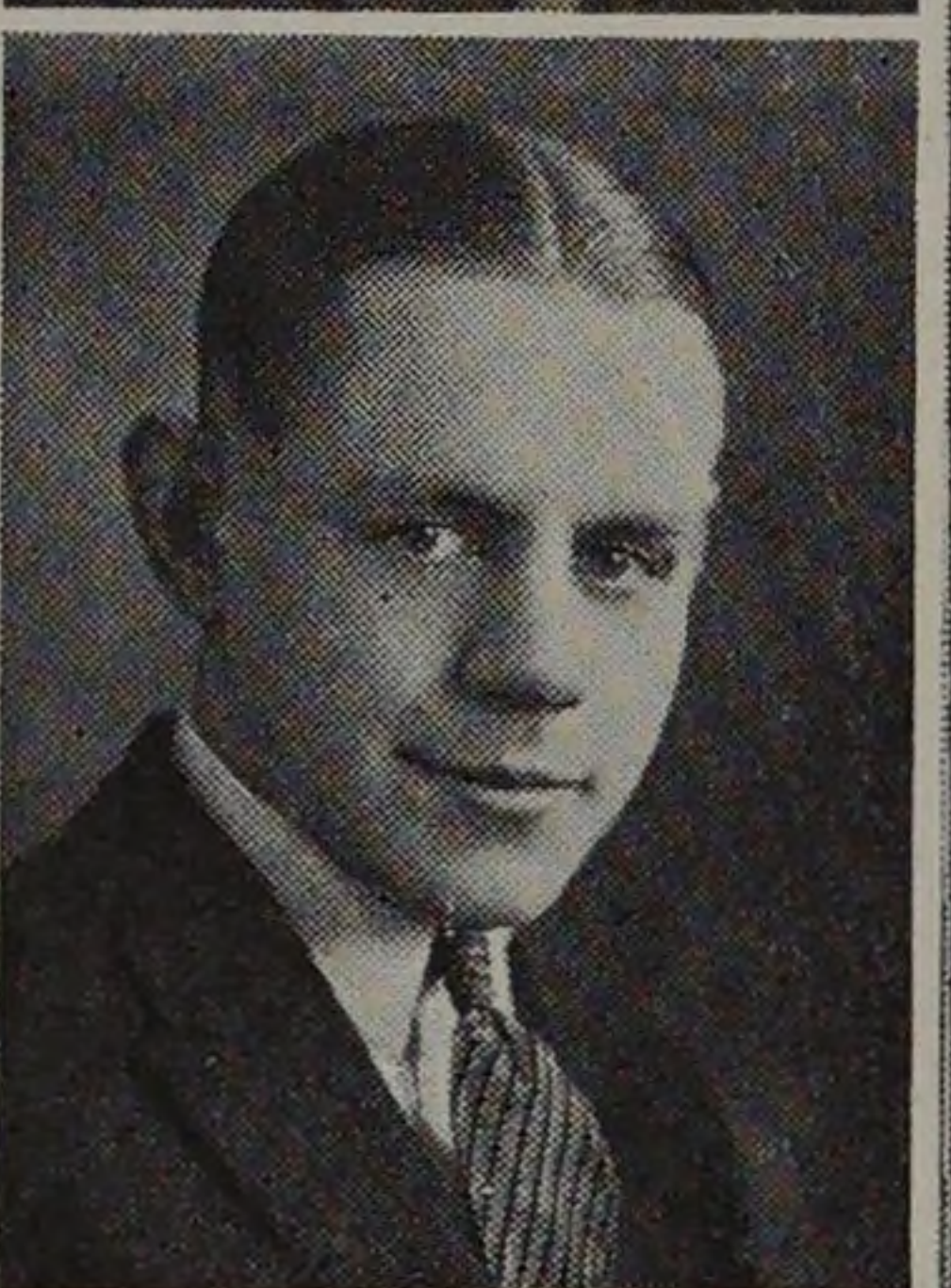
RICHARD T. LORENZ, JR., B. S. in C. E.  
Born March 31, 1905.  
Kemper Military School.  
Delta Tau Delta.



LYMAN J. LOWDEN, B. S. in E. E.  
Born May 18, 1905.  
Parker High School.  
Phi Pi Phi.  
A. I. E. E.  
Manager Basketball Team, '25-'26; Dramatic  
Club; Inter-class Basketball; Inter-class  
Baseball.



PAUL D. MCCURRY, B. S. in A.  
Born December 3, 1903.  
Lane Technical High School.  
Scarab; Theta Xi.  
A. A. S.  
Massier, '26.



EARL LACY MCHENRY, B. S. in E. E.  
Born August 8, 1903.  
Johnstone Preparatory School; Armour Insti-  
tute Evening School.  
Eta Kappa Nu.  
A. I. E. E.; Honor "A" Society.  
Track, '24, '25, '26; Cross Country, '23, '24,  
'25; Wrestling, '23, '24, '25; -Captain, '26;  
Assistant Junior Marshal, '25; Chairman  
Cap and Gown Committee.