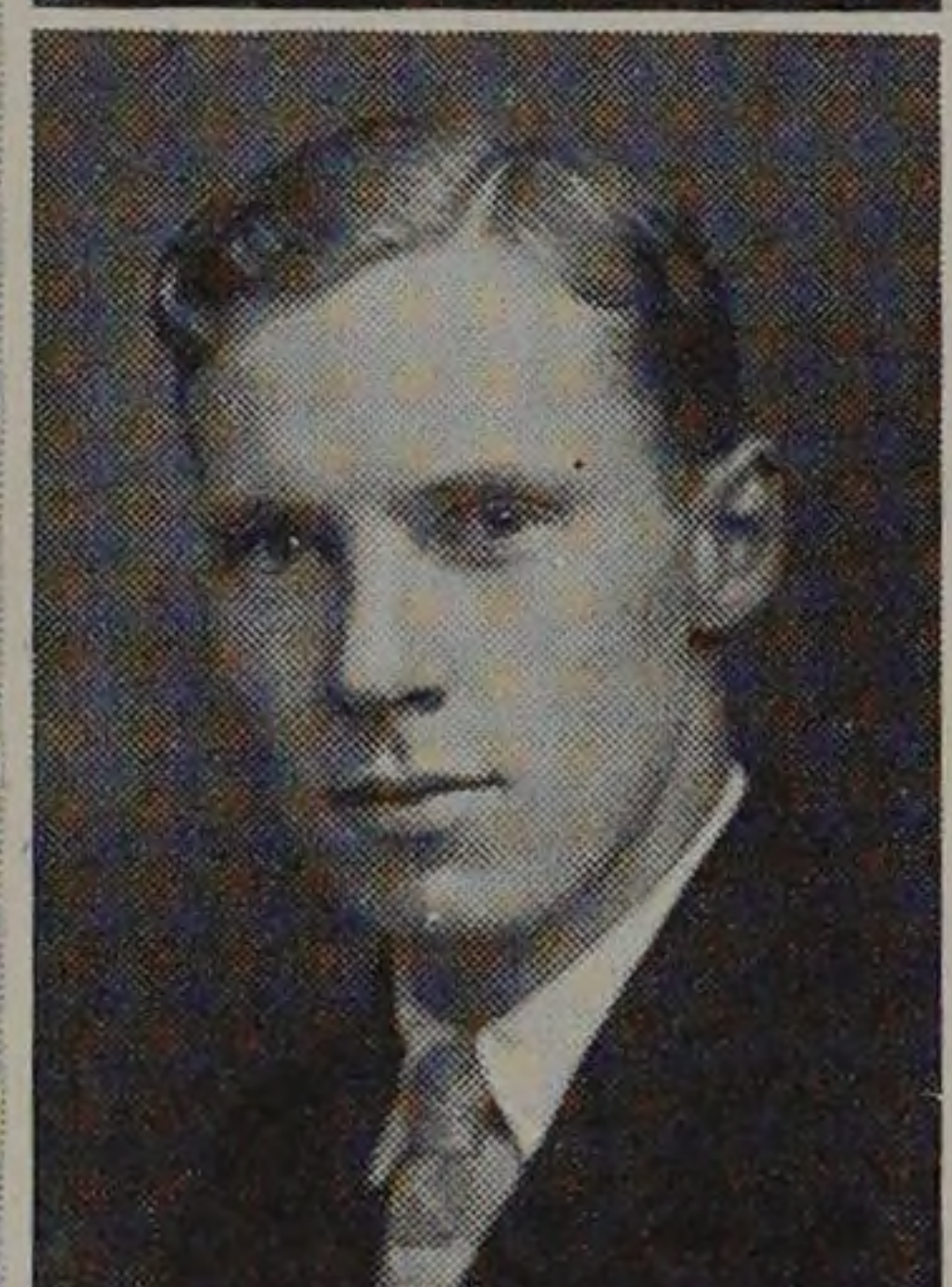


CLASSES



FLOYD EDWIN BROWN, B. S. in F. P. E.
Born February 28, 1902.
Omaha Central High School.
Phi Kappa Sigma.
F. P. E. S.
A. I. T. Dramatic Club, '23-'24; Band, '22, '23, '24; Orchestra, '22-'23; Manager, A. I. T. Musical Clubs, '23-'24; Glee Club, '21-'22; Manager, Varsity Basketball, '22-'23; Publicity Manager, '24.



EARL BUSCH, B. S. in A.
Born February 10, 1905.
La Grange High School.
Phi Kappa Sigma; Scarab.
A. A. S.
Swimming, '23, '24; Basketball, '23, '24; Inter-class Basketball, '23, '24; Inter-class Track, '23.



MAXWELL REGINALD CHAMBERS, B. S. in E. E.
Born October 2, 1904.
Fenger High School.
A. I. E. E.
Custodian, Dramatic Club, '22; Boxing and Wrestling, '21, '22, '25; Senior Social Committee.



LOUIS W. CHATROOP, JR., B. S. in F. P. E.
Born June 1, 1903.
Lane Technical High School.
Triangle.
W. S. E.; A. S. C. E.
Social Chairman, '25-'26; Track, '24; Inter-class Track, '24; Dramatic Club, '23-'24; Civil Summer Camp Club, '24; Treasurer, Camp Club, '24.



CARMEN JOSEPH CLEMENT, B. S. in Ch. E.
Born September 19, 1904.
Englewood High School.
A. I. Ch. E.