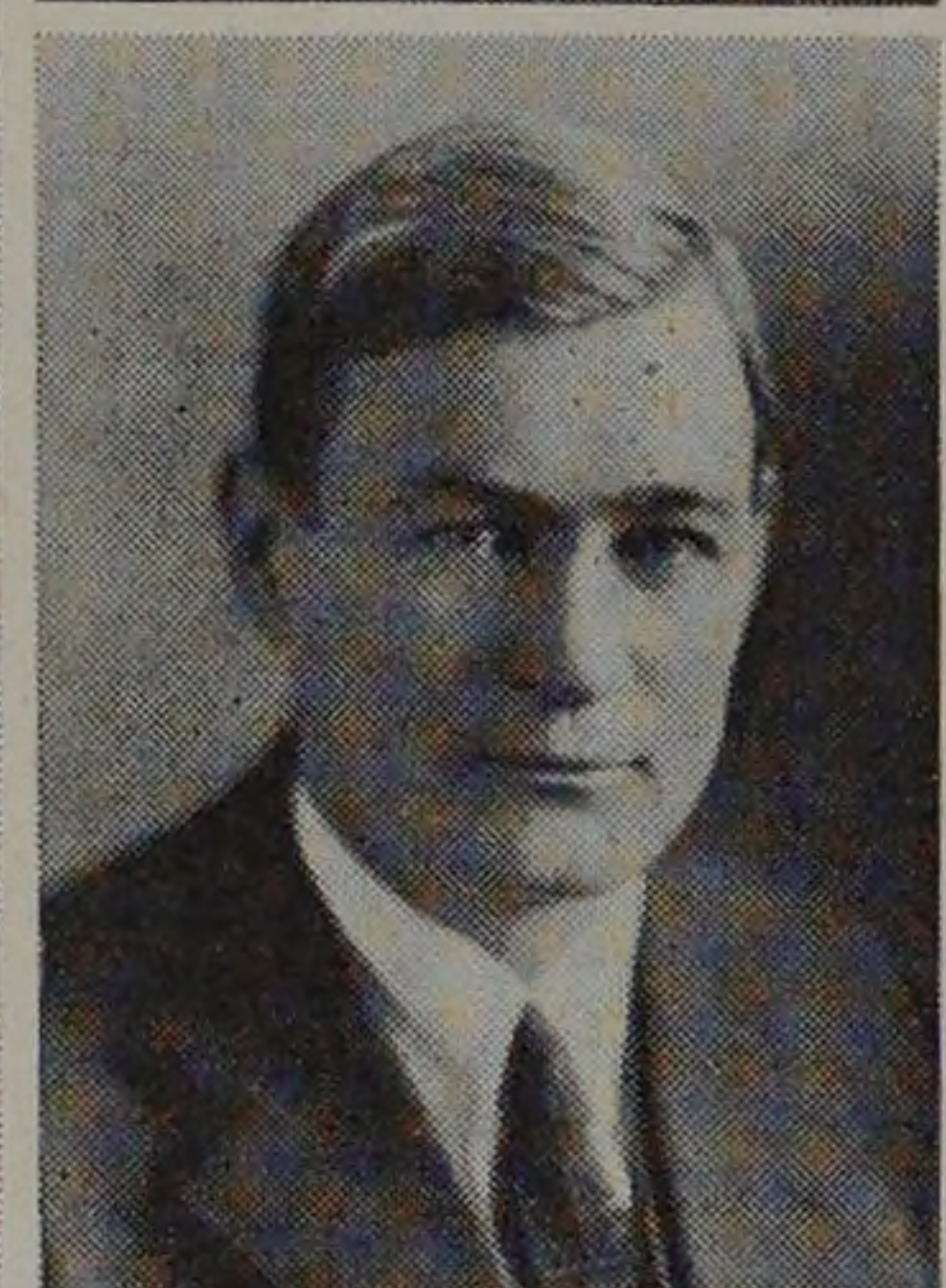


FACULTY



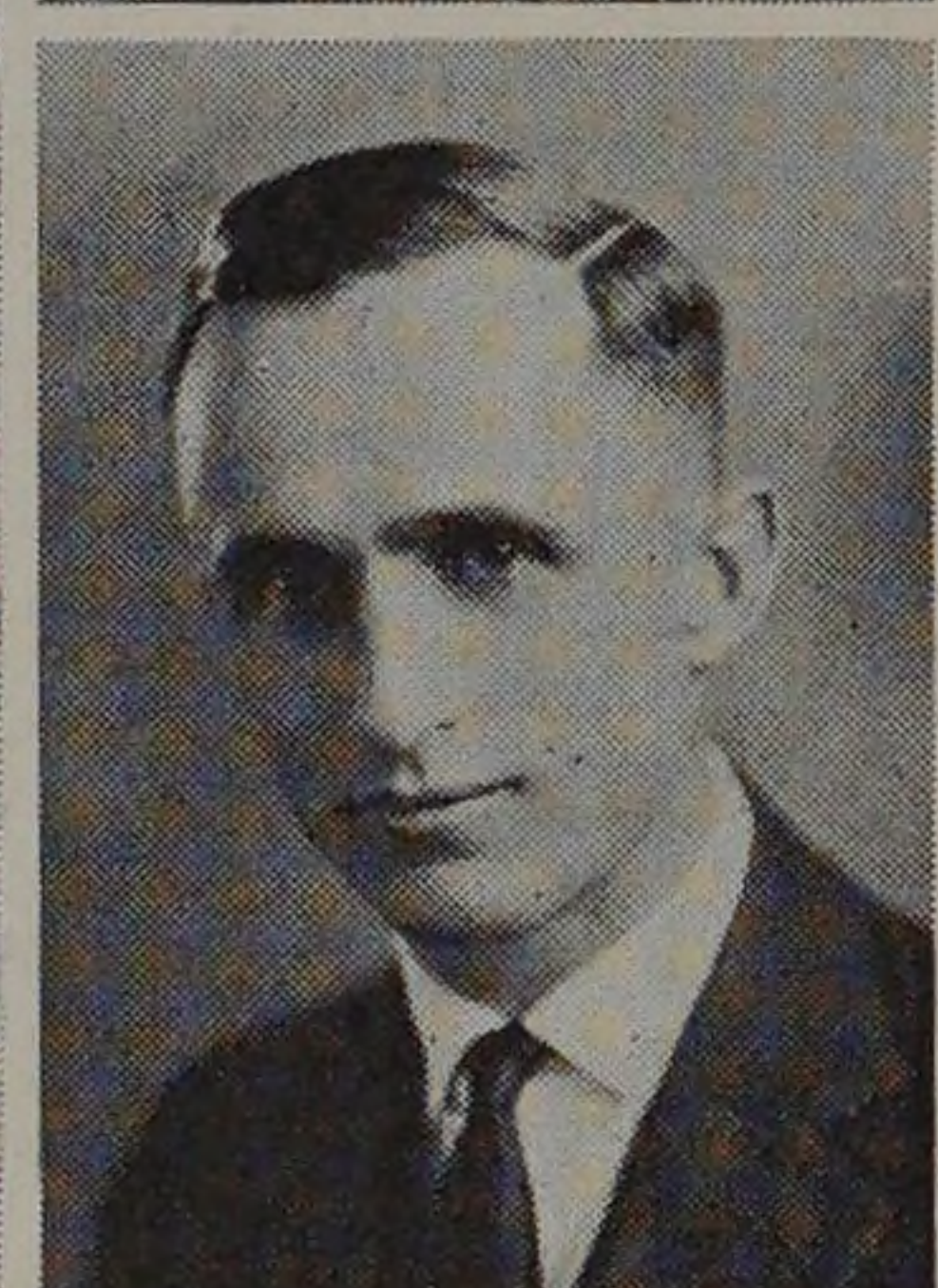
ARTHUR HOWE CARPENTER

Assistant Professor of Metallurgy.
Ohio University; Northwestern University;
A. M., Ohio University, 1914.
Delta Tau Delta, S. A. R.



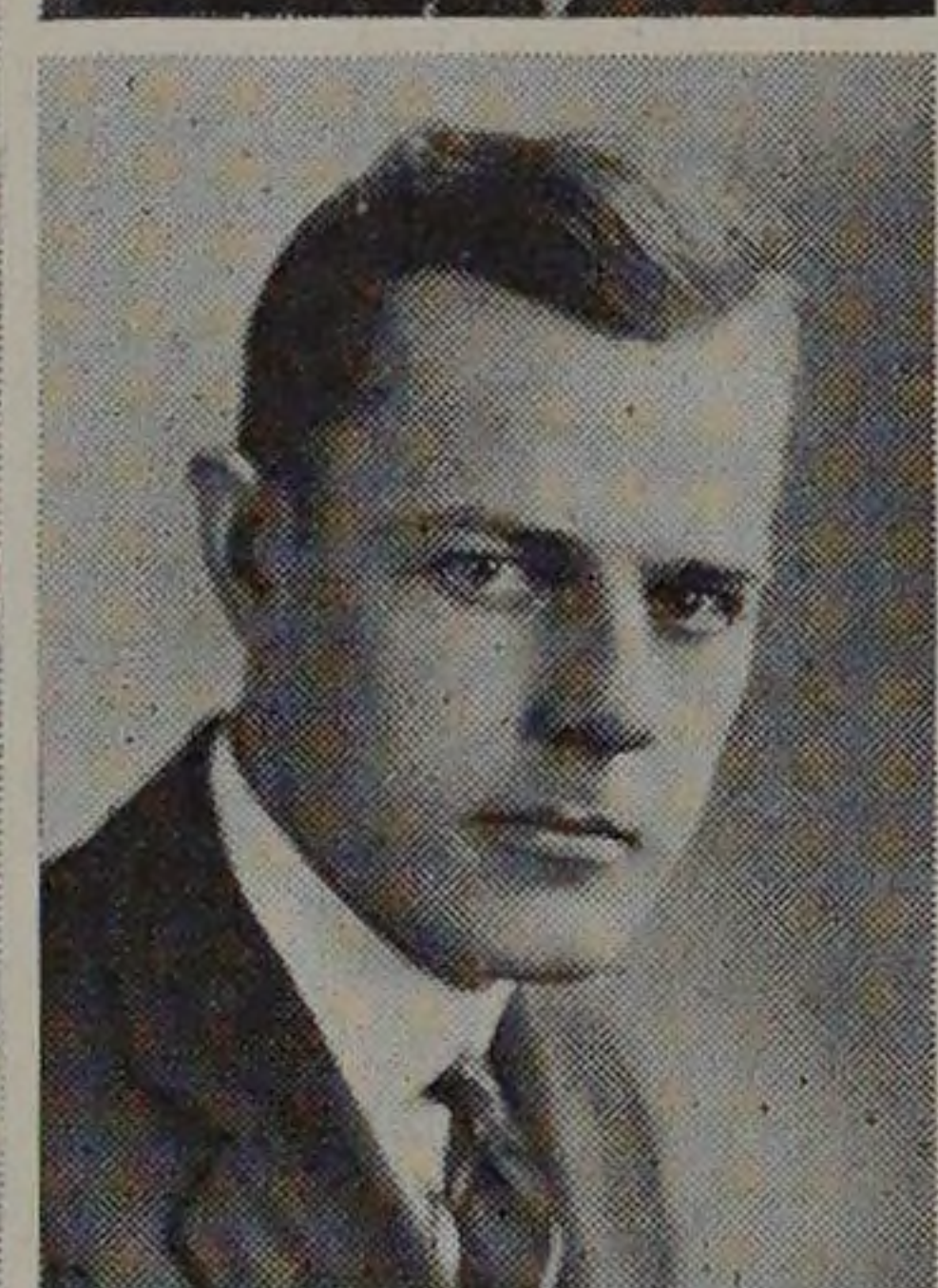
JOHN JOSEPH SCHOMMER

Assistant Professor of Industrial Chemistry.
B. S., University of Chicago, 1909; Research
at the University of Chicago, 1910; B. S.,
Armour Institute of Technology, 1912; Ch.
E., 1920.
Phi Kappa Sigma.



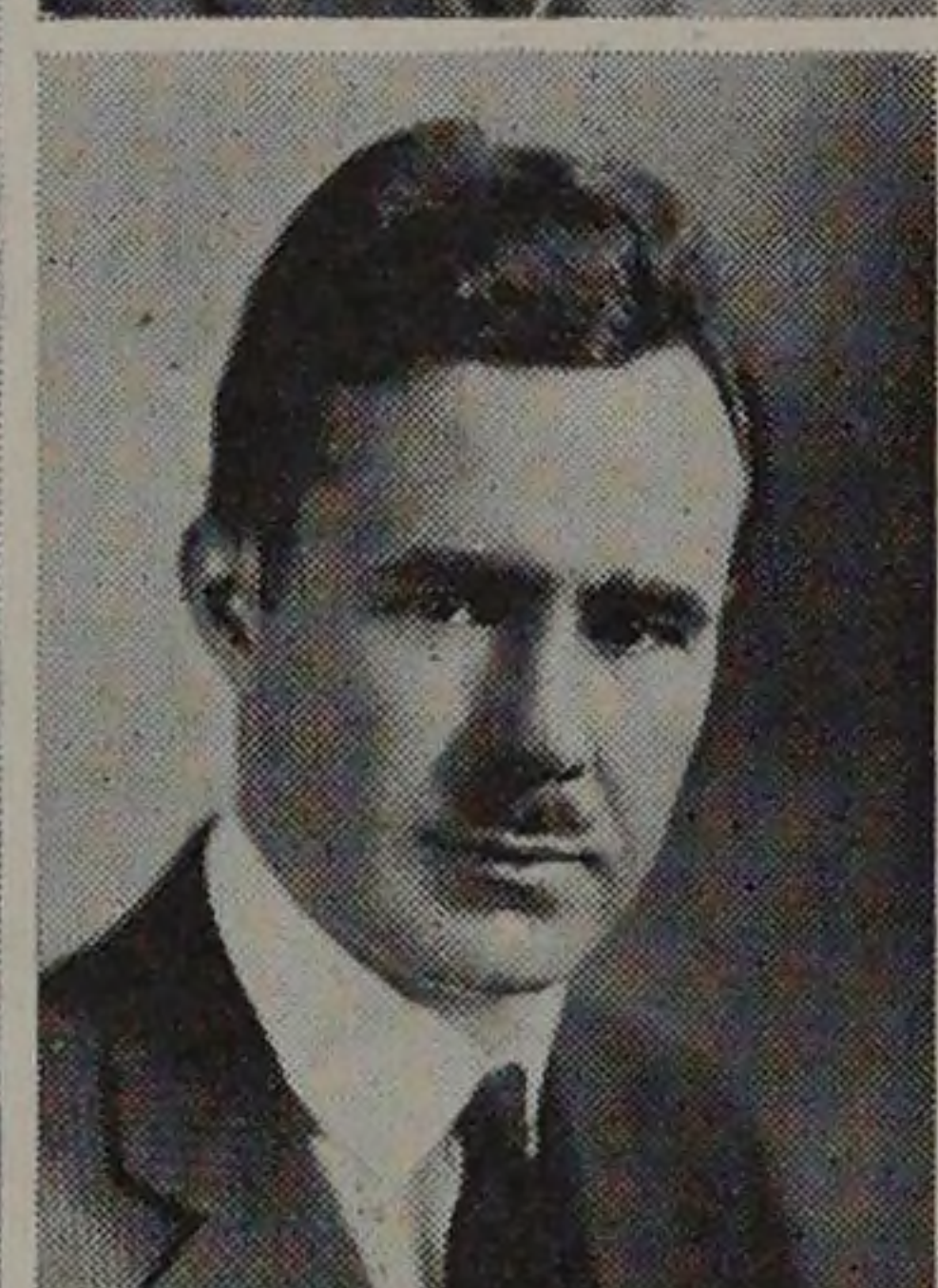
STANTON EDWIN WINSTON

Assistant Professor of Kinematics.
Colorado School of Mines; A. B., University
of Denver, 1913; A. M., 1923; B. S. in
M. E., Armour Institute of Technology,
1924.



WILLIAM WHITE COLVERT

Assistant Professor of Physics.
B. A., Cumberland University, 1917; A. M.,
1919.



WILLIAM FRANK MCCAUGHEY, JR.

Assistant Professor of Architectural Design.
B. S., Carnegie Institute of Technology, 1916.
Sigma Nu, Scarab, Honorary Member Tri-
angle, Delta Skull.