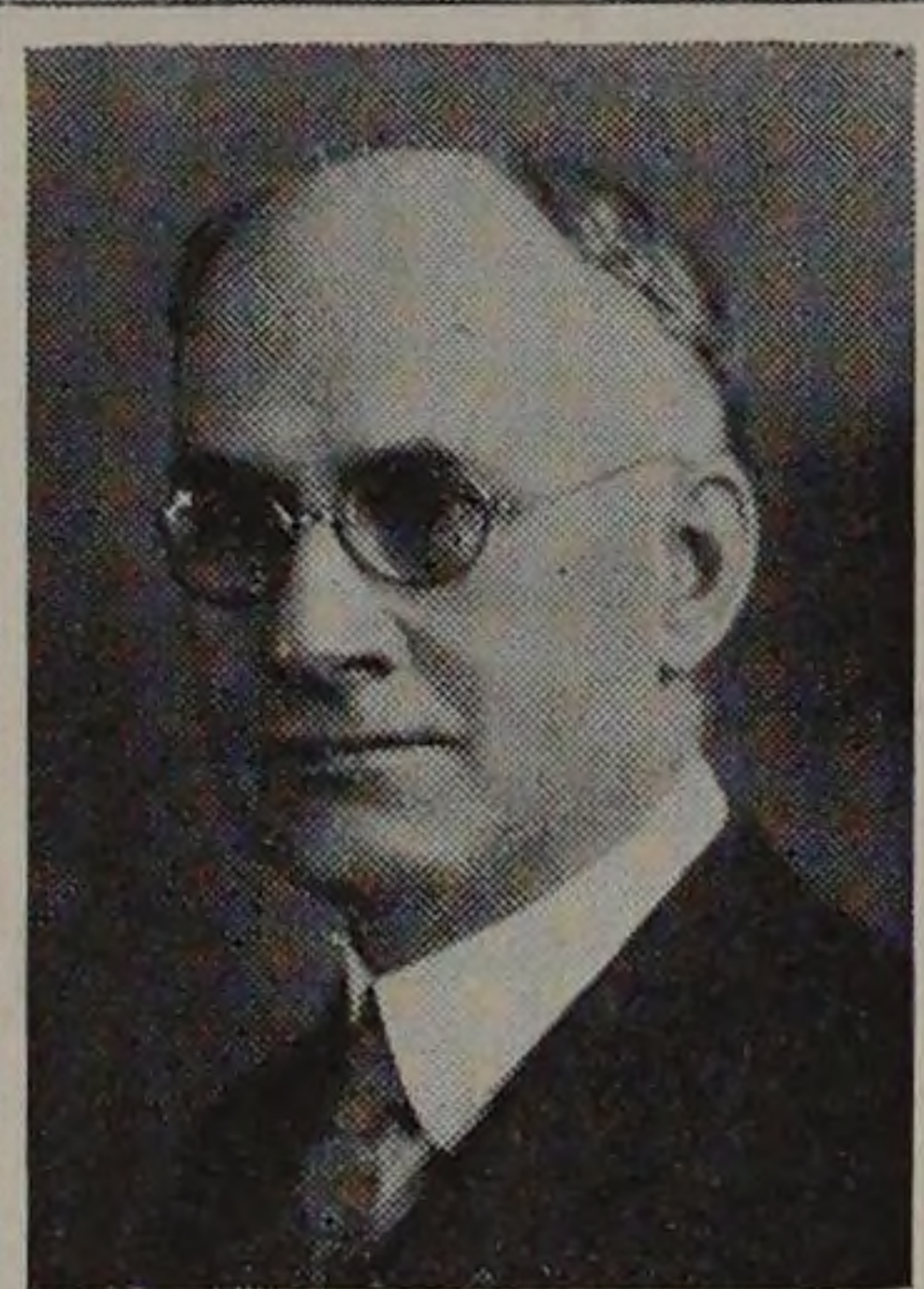


FACULTY

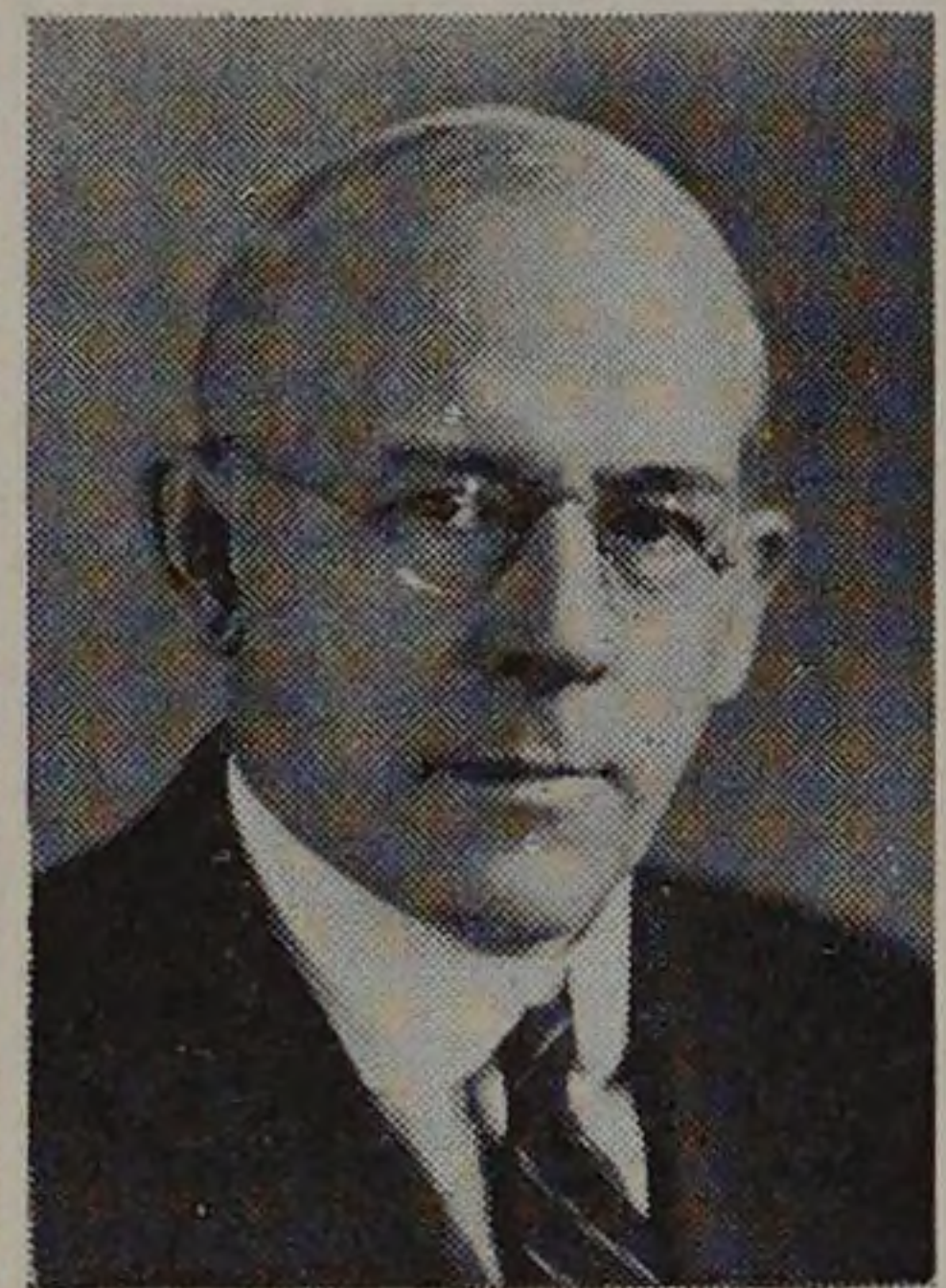


OLIVER CHARLES CLIFFORD

Associate Professor of Electrical Engineering.

A. B., Oberlin College, 1893; Ph. D., University of Chicago, 1907.

Sigma Xi.



CLAUDE IRWIN PALMER

Associate Professor of Mathematics.

A. B., University of Michigan, 1903.



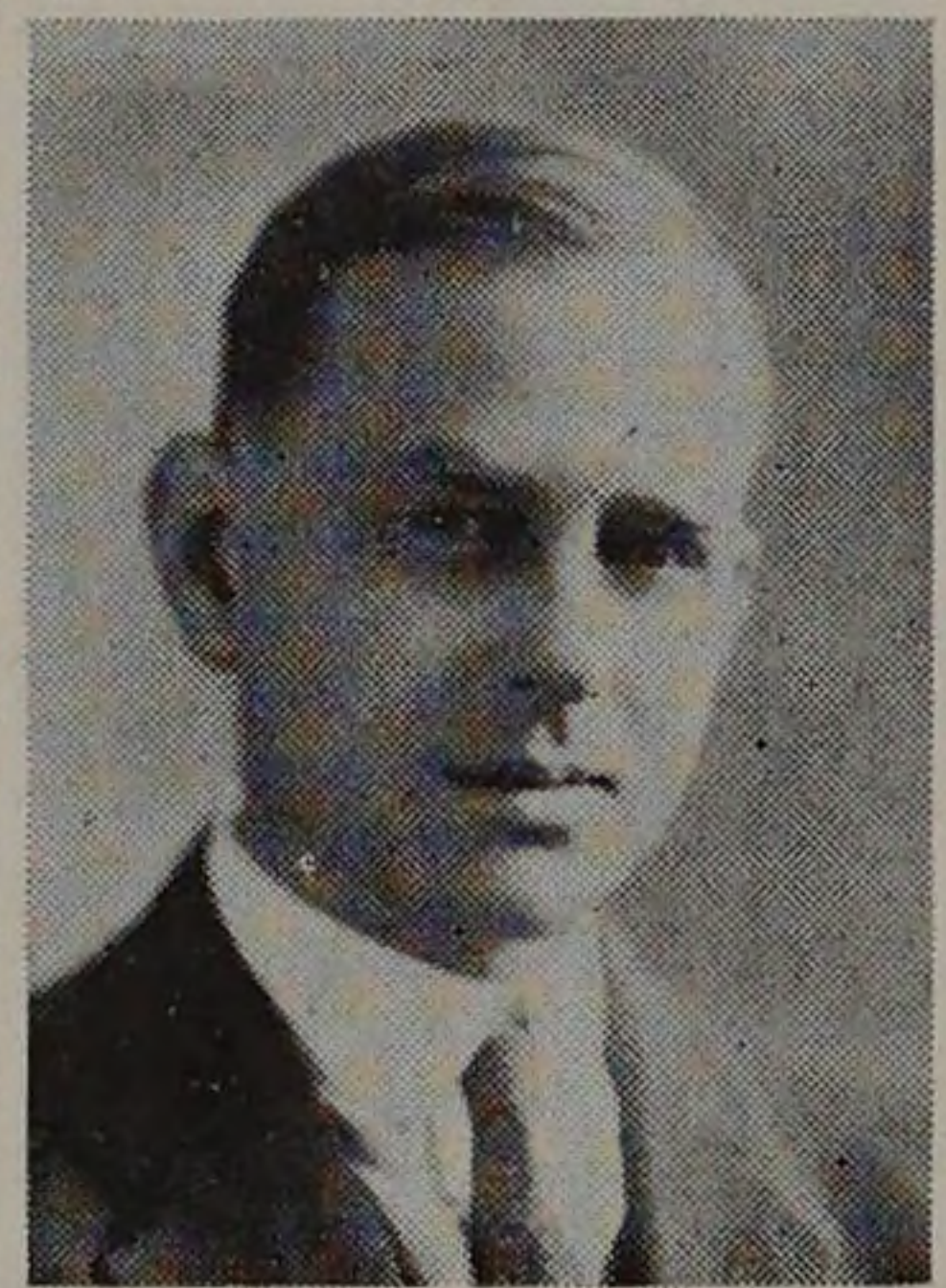
HENRY LEOPOLD NACHMAN

Associate Professor of Thermodynamics.

B. S., Armour Institute of Technology, 1902;

M. E., 1905.

Phi Pi Phi, Tau Beta Pi.



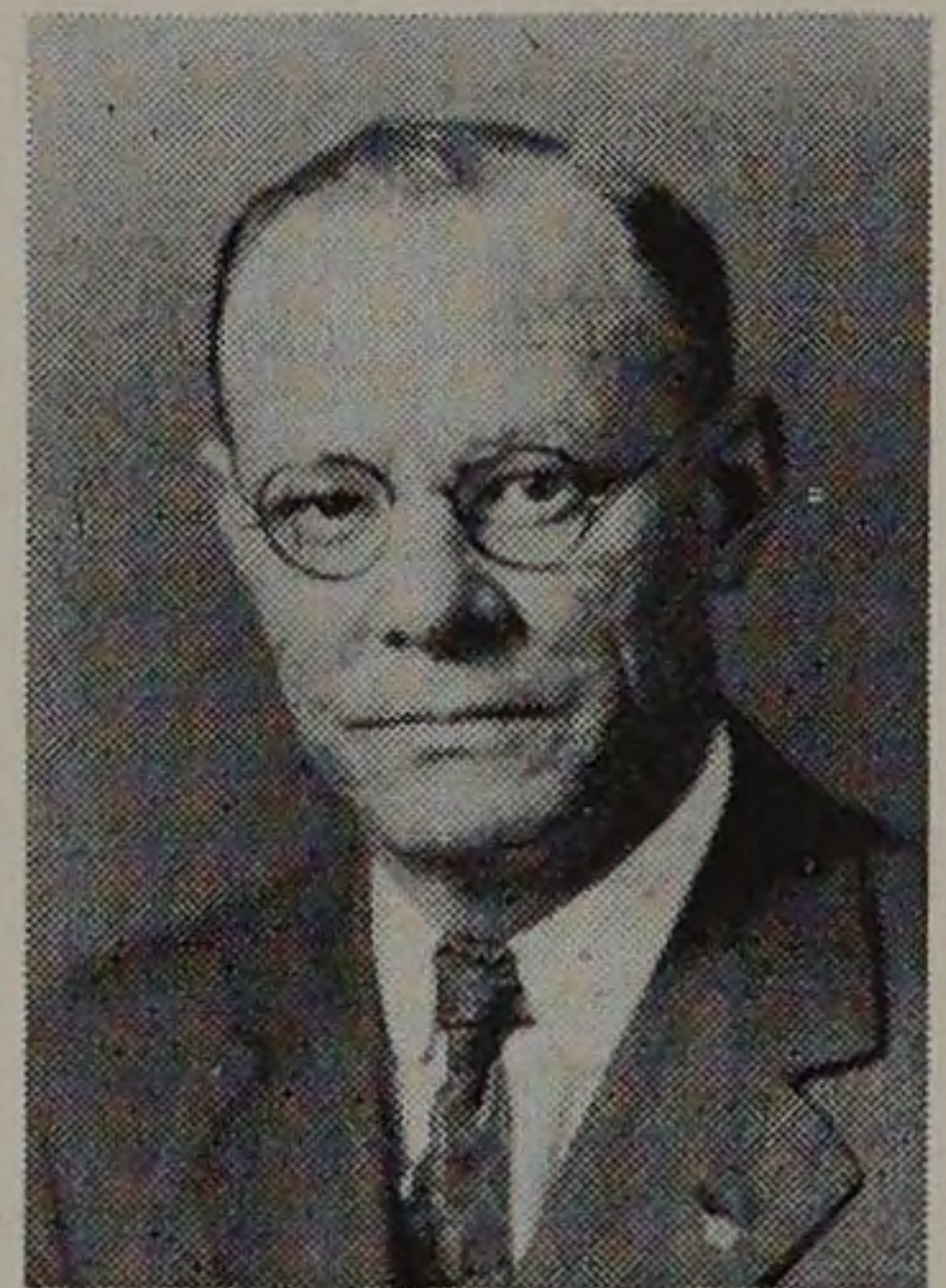
DANIEL ROESCH

Associate Professor of Gas Engineering.

B. S., Armour Institute of Technology, 1904;

M. E., 1908.

Phi Pi Phi, Tau Beta Pi, Honorary Member of Pi Tau Sigma.



EDWIN STEPHEN LIBBY

Associate Professor of Experimental Engineering.

B. S., Armour Institute of Technology, 1902;

M. E., 1907.

Tau Beta Pi.