

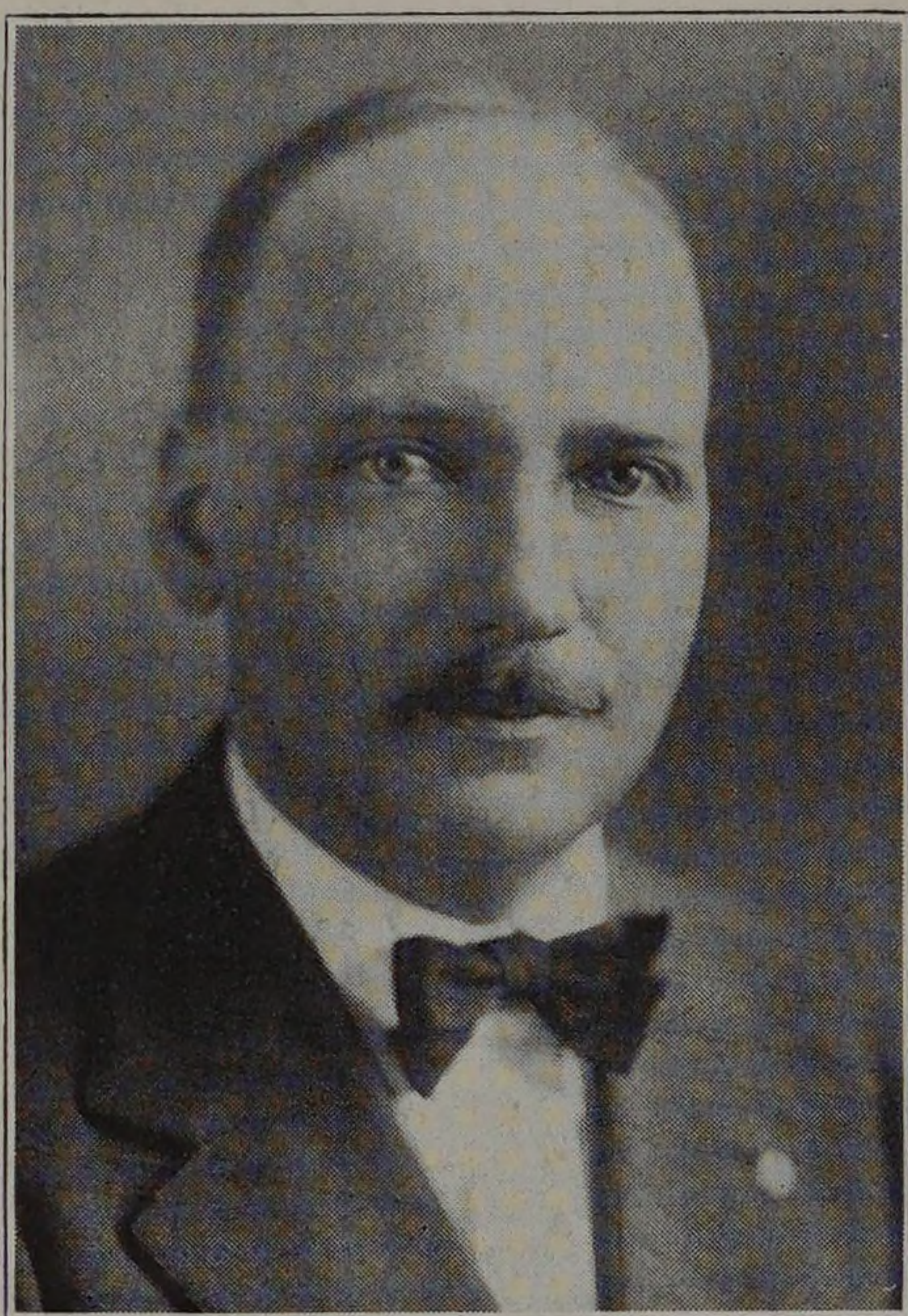
ATHLETICS

Tennis

CHARLES A. TIBBALS.....*Coach*

JOHN H. FORD.....*Captain*

CLIVE A. BISCHOP.....*Manager*



Tennis at Armour Institute seems to have been given a lively impetus by the acquisition of courts, the stimulus of the fall tournaments, and interest shown in intercollegiate competition. The call for candidates for the 1924 tennis team was issued by Coach Tibbals prior to the outdoor season to enable the boys to use the gymnasium for pre-season conditioning. About twenty men reported and showed up for practice regularly. Of these men captain Harry Ford was the only player remaining from the team of the previous year.

Coach Tibbals was presented with quite a problem in selecting the squad, since he had seen only a few of the men in action, and since the only available information was from the unfinished fall tournament of the previous year, and the gymnasium practice.

The outdoor season started late because of the inclemency of the weather, and very little time was afforded for practice preliminary to any of the matches. In fact often the men had no practice at all, between matches, the weather was so unkind.

In the point of matches won the season was not as successful as the previous one. Nevertheless, the matches were all closely played, many friends were made, and an enviable reputation for sportsmanship and those indefinable qualities that make tennis what it is, was established.

From the candidates working out of doors, the squad was selected as follows:—Capt. Ford, Bishop (also manager), Taylor, Greenleaf, Peacock, and Castle.

The order of play varied considerably through the season, competition for place being keen on account of the fact that most of the men were rather evenly matched. In each match it was the problem of the coach to select the order which seemed best for that day, rather than to attempt to adhere to a constant order. In singles Ford, Peacock, Bishop, Taylor, and Greenleaf carried most of the burden; in doubles Ford and Bishop, Bishop and Taylor, and Peacock and Castle were the teams. With all of these men except Ford competing for the 1925 team, it may be easier to rate them in June than it is now, in January.