

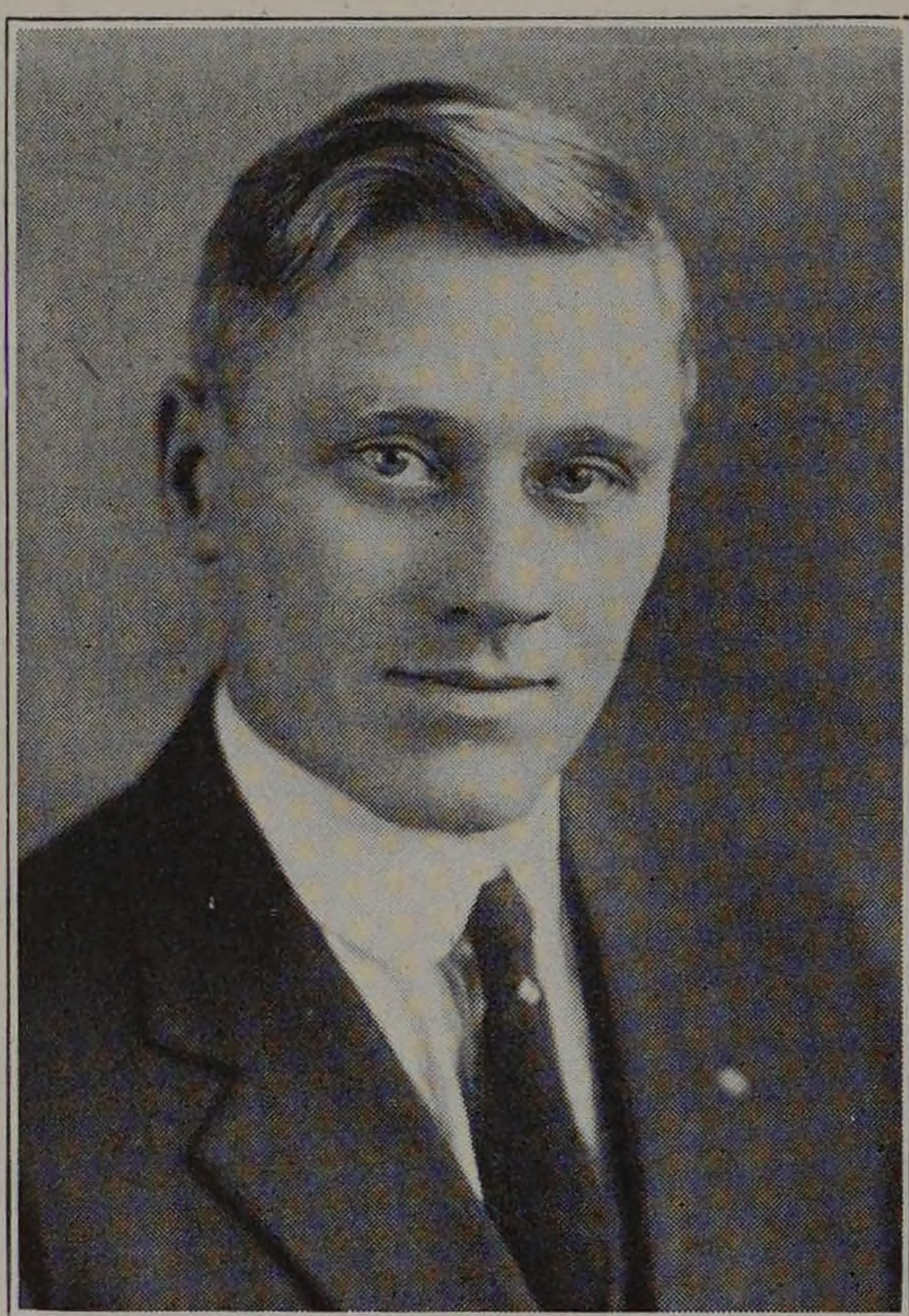
ATHLETICS

Baseball, 1924

HENRY PENN.....*Coach*

CHARLES PLOCAR.....*Captain*

JOHN SWEENEY.....*Manager*



Captained by a sterling defensive player and a good hitter. "Chuck" Plocar, the 1924 season went its course with not all the games won but every one played. The weather was satisfactory at all times and the men were in fine shape. "Chuck" guided and directed the team through this hard season with the generalship of a master.

The pitching staff, though it started out fine, seemed to lose strength as the season progressed. The leading pitcher, though smallest of the "nine" was the largest aid to the team. He pitched great ball against the opponents. Everyone knows him, "Sammy" Samuels.

Captain-elect Burke startled the fans by his wonderful ability to judge the position of a ball in the outfield. Burke should make a fine man to lead the team in 1925.

"Joie" McLaren, Bambino of the Tech. Team, threatened to damage Thirty-third Street property when he took his place at the bat. And at third base, he deftly handled the ball and glove.

In the game with Columbia, Armour had the satisfaction of holding them to a 4-3 score, while McCauley, a White Sox recruit, was pitching for Columbia.

The hardest game of the year was with Iowa State College. Armour got four runs in the first inning, but due to a gradual weakening of the Armour pitchers, Iowa State College obtained a run in each of the last five innings. In this game, McLaren brought the crowd to its feet by his fielding.

With only two men graduating and with an available supply of material in the lower classes, Coach Penn should be able to give Armour Tech. a winning team in 1925.