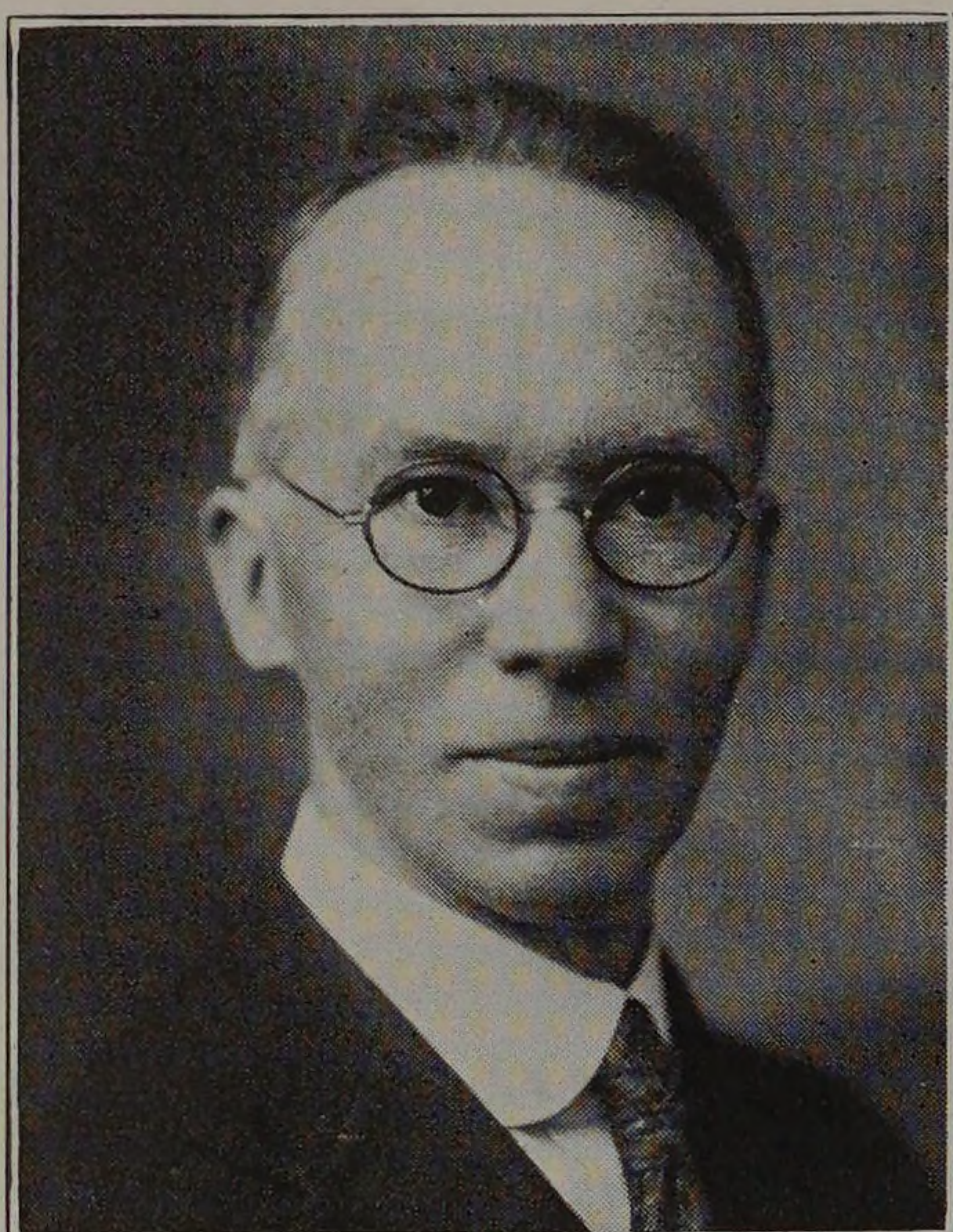


CLUBS

ORCHESTRA



F. W. ANDREW, *Director.*

For some time the need of an Orchestra at Armour Institute of Technology had been felt. Every assembly, mass meeting or similar occasion reminded the student body of the fact. We have had some noteworthy "jazz" orchestras in the past, but it was not until last year that we saw the organization of a concert orchestra. The Armour Athletic Association furnished the financial footing and Mr. F. W. McClusky agreed to serve as leader for the Orchestra.

The popularity of the Orchestra goes unquestioned. The number of students desiring to join when the call was made for material showed at once the feeling prevalent. With little more than a month of practice, during which only one night a week was available, the Orchestra made its first appearance before an assembly shortly before Thanksgiving Day. The applause and spirit shown at this assembly proved that the Orchestra had become a permanent institution at the school. Since then the Orchestra has played for all assemblies, and it would now seem from a viewpoint of faculty and student alike that an assembly without the Orchestra would be incomplete.

In addition to playing at assemblies, the Orchestra plays in conjunction with the Glee Club at all of their concerts; for as members of the Armour Tech Musical Clubs, their work, in this respect, runs parallel with each other. The pleasing effect of a program made up of both Orchestra and Glee Club selections goes without saying.

At the annual Home Concert on April 23, the Orchestra appeared under the direction of Mr. F. W. Andrew.