

ATHLETICS



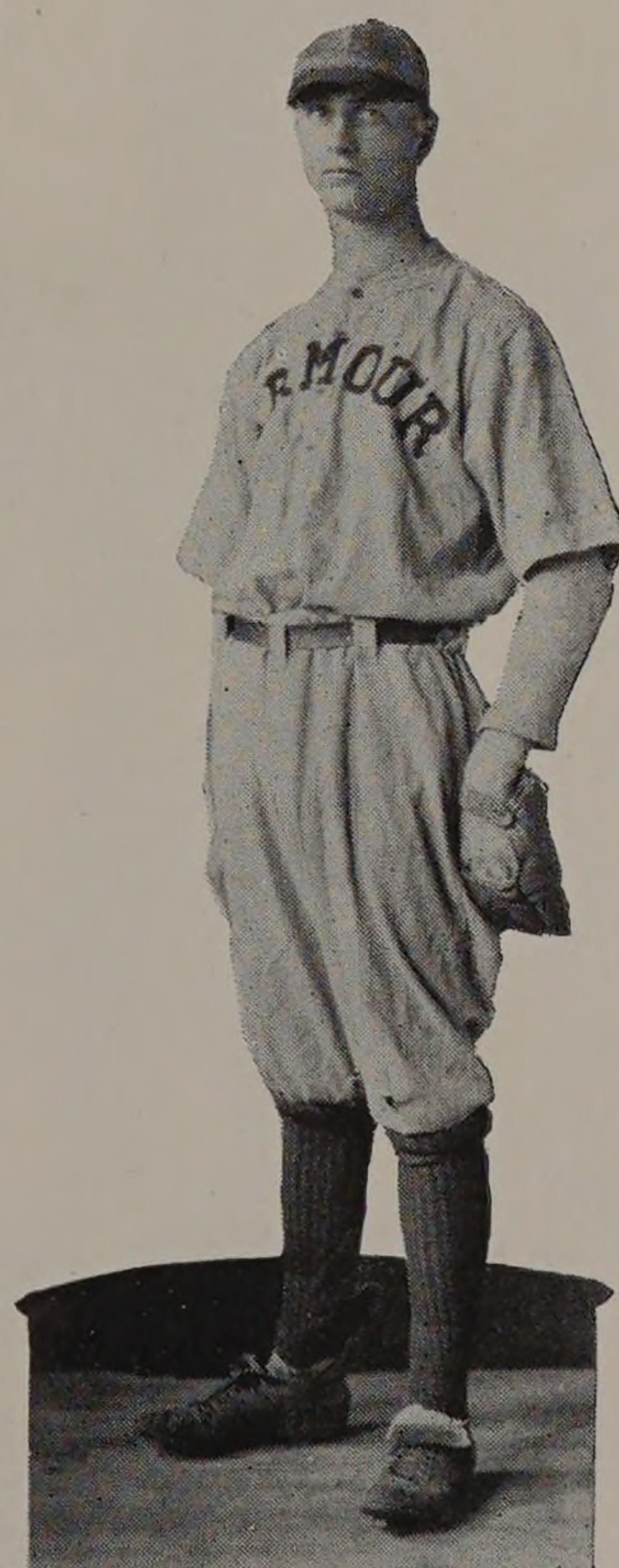
J. LEO WALSH

Leo Walsh has gained for himself a permanent place in the hearts of the Armour students by virtue of his splendid work, both as coach and player, with the Armour varsity baseball team.

In September, 1920, "Leo" registered in the M. E. Department of the Institute and diligently applied himself to his studies without ever a word of his previous performances in the baseball world. However, the truth will out and after his past efforts on the diamond had been traced back through two years as coach and captain of the Crane Junior College team, one year as first baseman on the Bloomington team in the Three I League, and a season in the Michigan-Ontario League, he was asked to take the position of coach of the Armour varsity baseball squad. He surpassed all expectations when he built up the 1921 team and led them through the most successful baseball season Armour Tech has seen in the last nine years. In mid-season the Athletic Board ruled that as a student, Walsh was eligible to participate in baseball and he immediately broke into the lineup at first base, finishing the season with a batting average of .496. Hopes of another season arose, when early in 1922 J. Leo again signed to coach baseball in the coming year.

ZINGHEIM

The lanky captain who was prone to put them over the fence was one of the hardest players on the squad. He covered his position in left field well and his peppy support was a big asset for the team. He entered Purdue last fall.



The Cycle