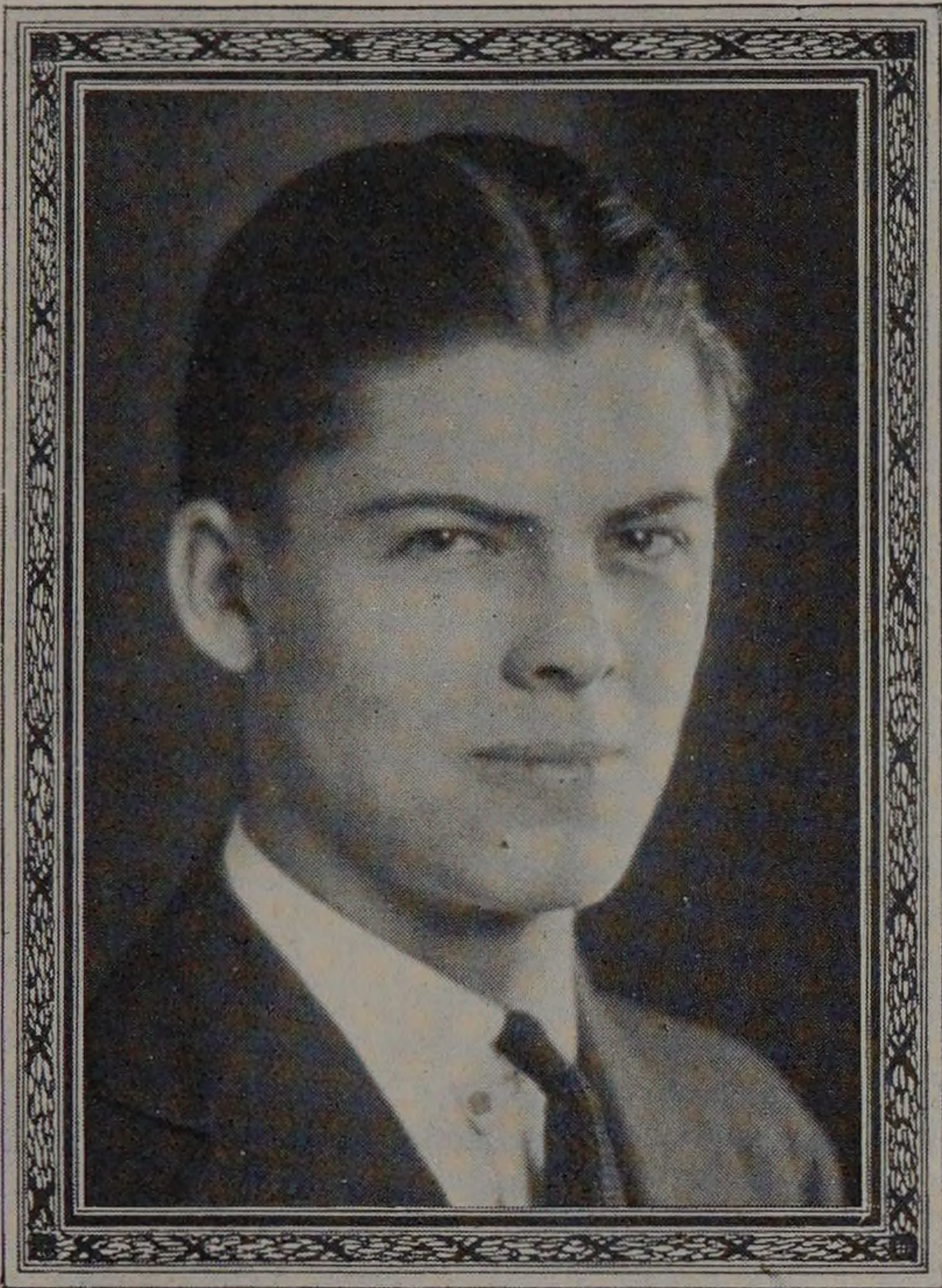


CLASSES

B. S. IN CH. E.



ALFRED ALVERTUS DAVIS, JR.

Born March 10, 1901, Chicago, Illinois.
Harrison Technical High School.
Chemical Engineering.
Delta Tau Delta; Phi Lambda Upsilon.

Al is always going on week-end trips. On Fridays, immaculate, with suitcase in hand, Al is hurrying away from school to catch a train. Always cheerful, very often witty, he is desirable everywhere. There has been gossip of Al's conquests in certain directions, but we will let that rest. I mentioned that Al was immaculate, let me enlarge upon that. It has been my desire to learn how he does it, but it seems that the secret is all Al's own.

ELMER F. DHUS

Chicago, March 19, 1900.
Chemical Engineering.
Oak Park High School.
Sigma Kappa Delta; Phi Lambda Upsilon.
Glee Club, 3, 4.
A. Ch. E. S., 3, 4.

We will be greatly disappointed if some day we don't find Elmer an alderman of his ward, or holding some office that will do credit to his rotundity. Elmer has to laugh just once in one's presence and one will never forget him. Always doing his best and making it count, Elmer has carved the proverbial niche for himself at Armour. We are glad to be Elmer's friends, and further, when we look at him we decide that it would not be very wise to have a disagreement with him.

