

CLAUDE IRWIN PALMER

Associate Professor of Mathematics.

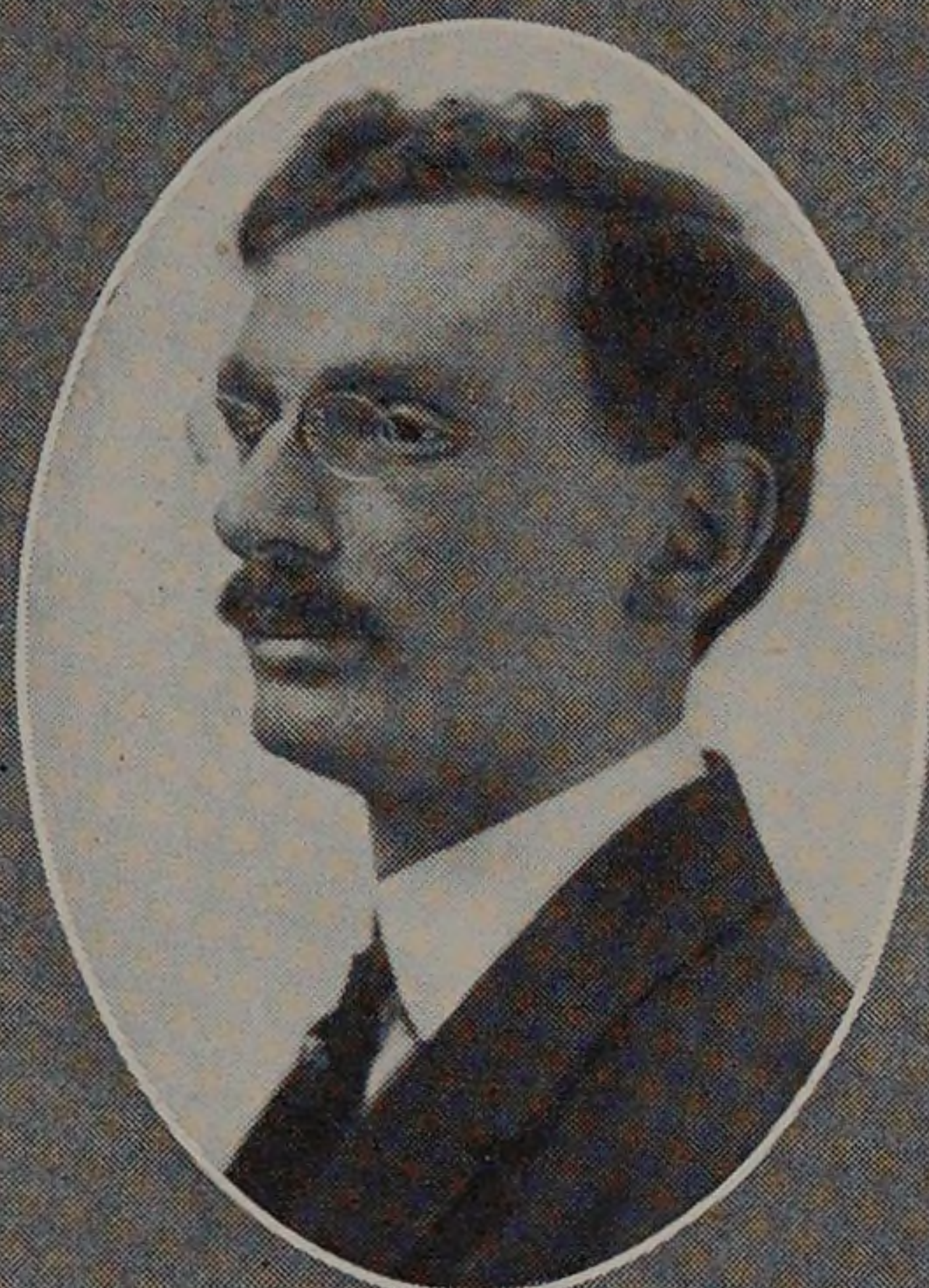
Birthplace, Michigan.

A. B., University of Michigan, 1903.

Member of the American Association for the Advancement of Science; American Mathematical Society; Mathematical Association of America.

Author of "Arithmetic with Applications," "Geometry with Applications," "Algebra with Application," "Trigonometry and Logarithms," Co-author of Trigonometry, Plane and Solid Geometry, and Analytic Geometry.

Residence, 6440 Greenwood Avenue.



HENRY LEOPOLD NACHMAN

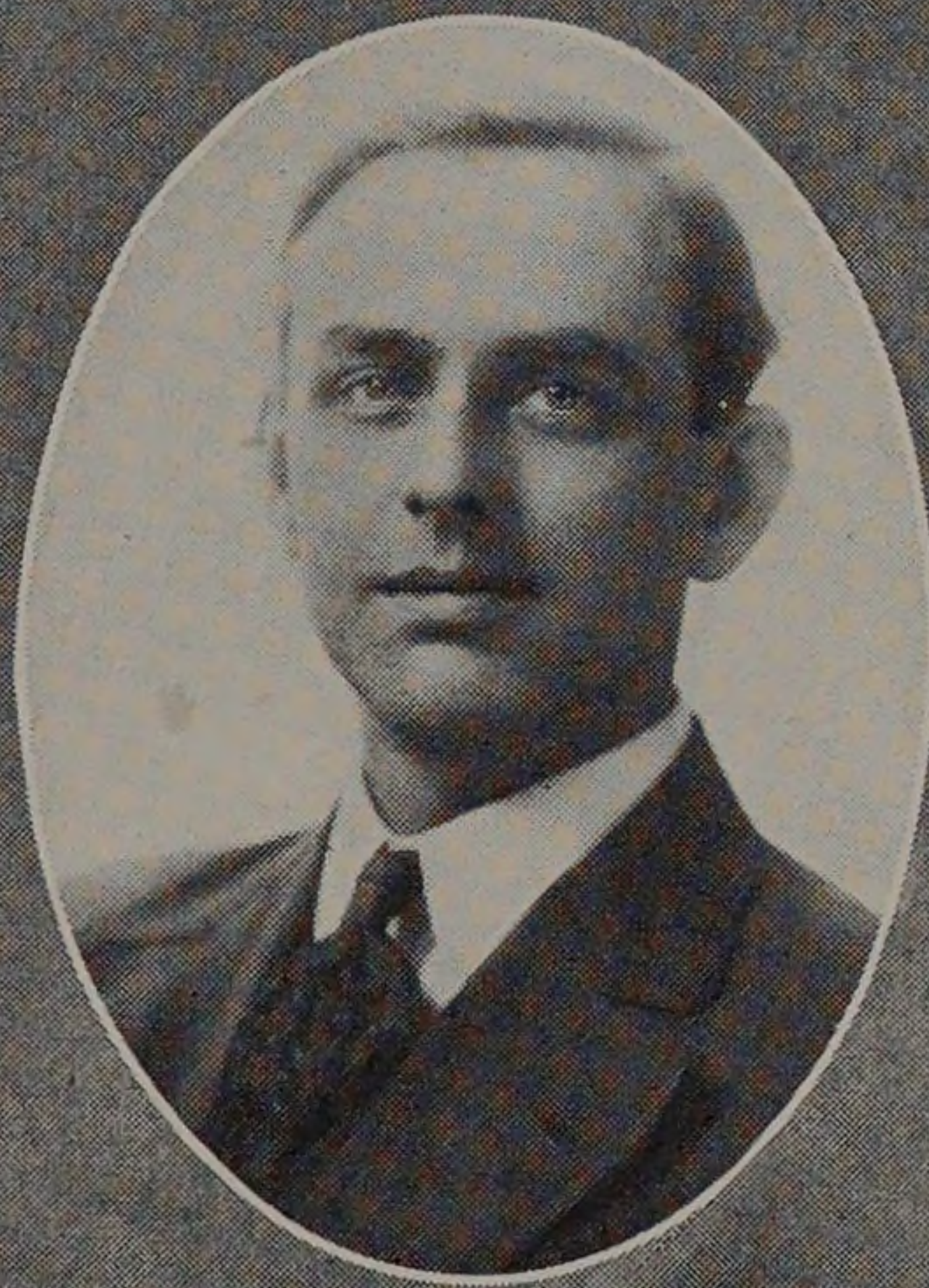
Associate Professor of Thermodynamics.

Birthplace, Sommerfeld, Germany.

B. S., Armour Institute of Technology, 1902; M. E., 1905.

Tau Beta Pi; Beta Phi.

Residence, 6049 Eberhart Avenue.



DANIEL ROESCH

Associate Professor of Gas Engineering.

Birthplace, Aurora, Illinois.

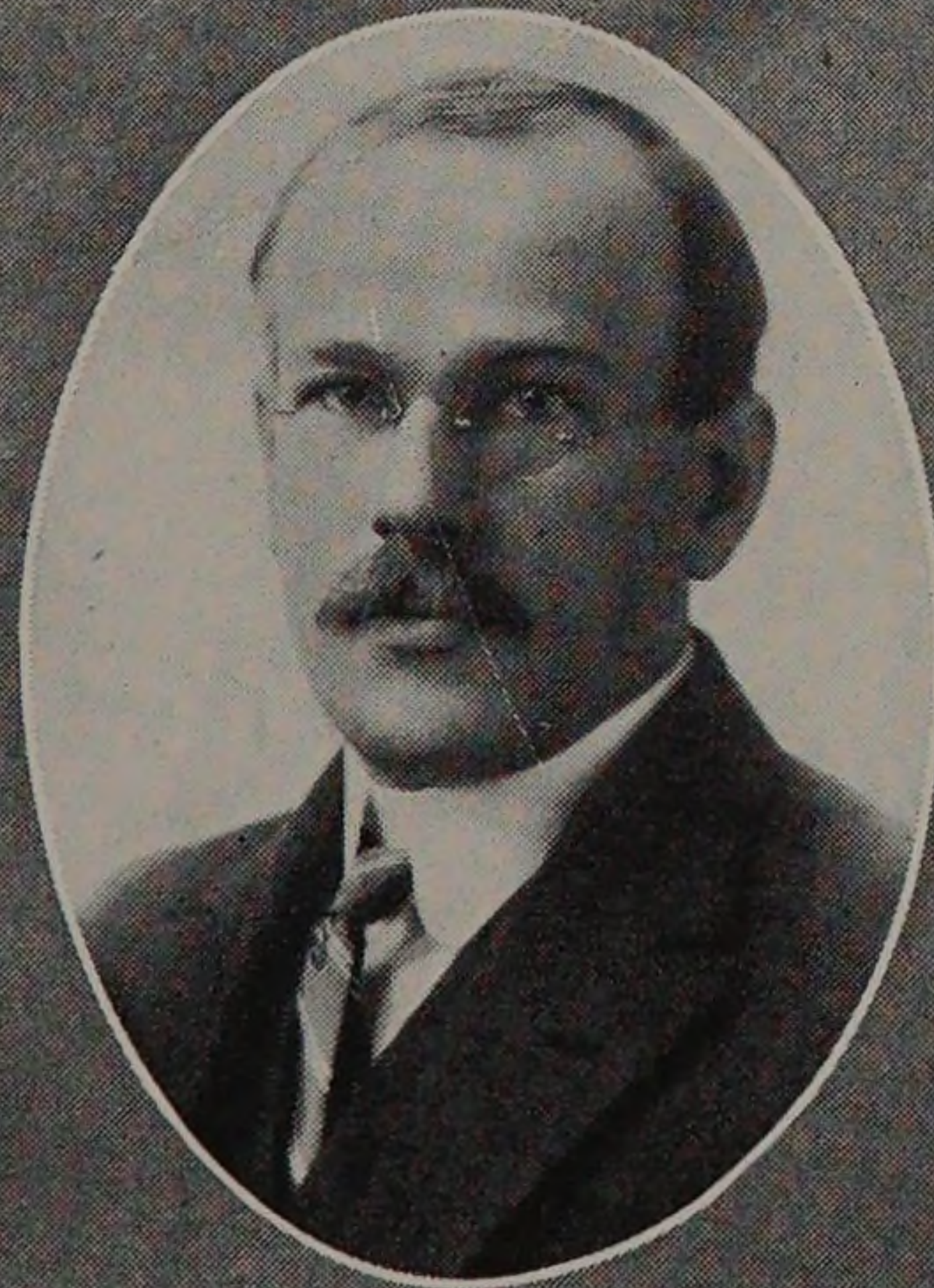
B.S., Armour Institute of Technology, 1904; M.E., 1908.

Tau Beta Pi; Beta Phi.

Member of American Society for Testing Materials; Society of Automotive Engineers, Inc.

Chairman Publication Committee, S. A. E.

Residence, 6230 St. Lawrence Avenue.



HERBERT JULIUS ARMSTRONG

Associate Professor of Railway Engineering.

Birthplace, Sunderland, Mass.

B. S., Massachusetts Agricultural College, 1897.

Phi Sigma Kappa.

Member of American Railway Engineering Association; Member of Western Society of Engineers.

Residence, 11353 South Irving Avenue, Morgan Park, Chicago.