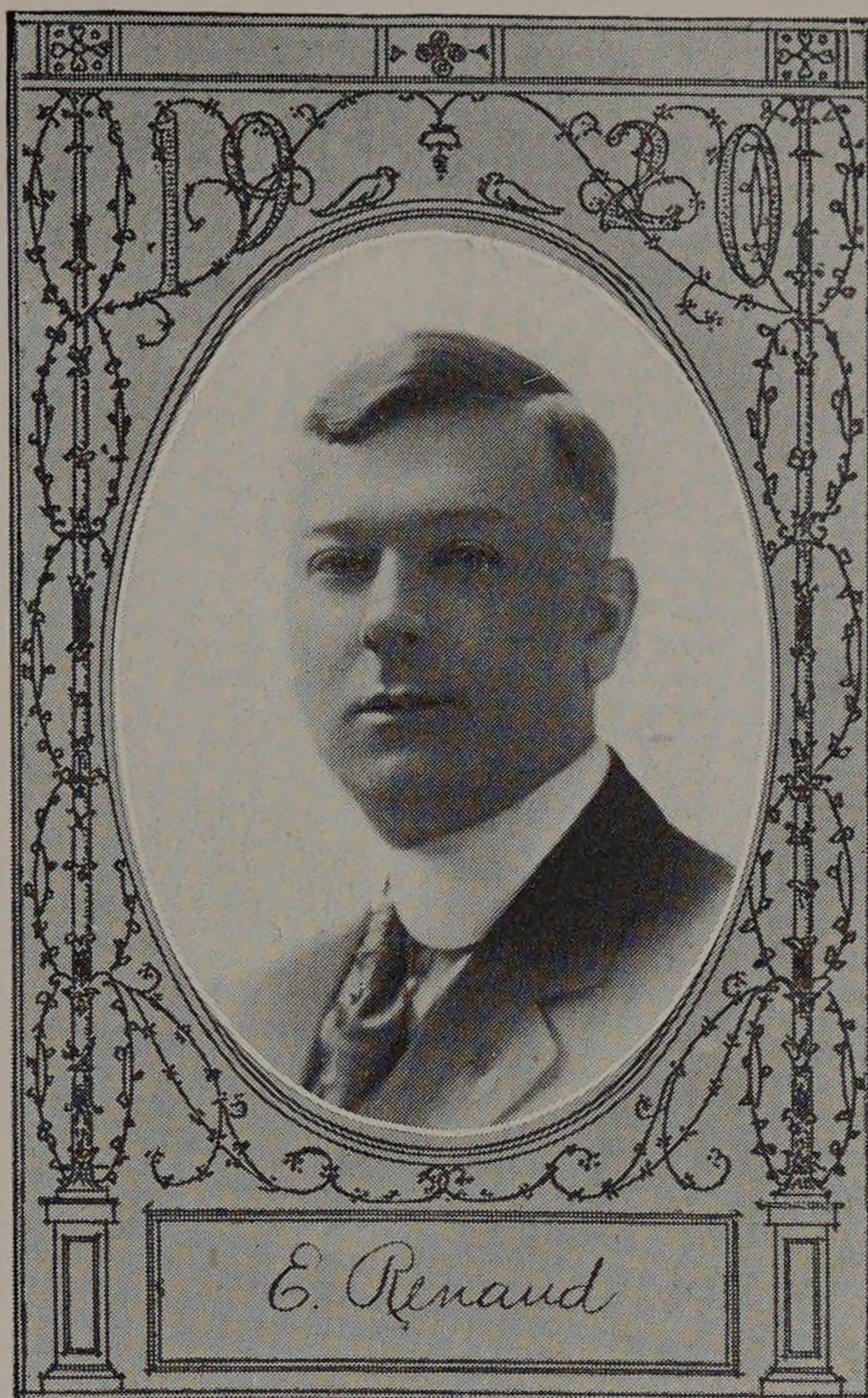


EUGENE S. RENAUD

Born April 6, 1890. Chicago, Ill.
St. James High School.
Electrical Engineer.
Design of a Turbo-Alternator.
A. I. E. E., Eta Kappa Nu.

"Ed" is one of those fellows whose experience in the commercial world has made him one of the more serious minded and settled men of the class. As a student and "good fellow", as well as an employee of the Sanitary District, "Ed" always has maintained a high standard and we know that if the past indicates anything, Ed will be successful in whatever he undertakes in the future.



EDWARD SCHEUER

Born April 15th, 1897, Green Bay, Wis.
Hyde Park High School.
Electrical Engineering.
Advanced Experiments in Dynamo Laboratory.
Eta Kappa Nu. A. I. E. E., Glee Club, '18-'19; Junior play, '17; Secretary Junior Class; Junior social committee; Cycle Staff, 1917.

"Eddie" came to Armour a while ago and his ever ready smile made a host of friends for him. He sure is a fountain of humor and can be funny at any time, even when others wish to be serious.

Scheuer is one student the "Profs." guessed wrong. We know he is a student and feel sure that he will be a success when he leaves school.

When it comes to the opposite sex, Eddie is an A1 man. If anybody doubts this just confer with Marks on the subject.

We know that anybody with Scheuer's will and good nature can easily make a banner success of his life.

There were no activities that went without Scheuer's support. He was right there all the time whether they were athletics or social events.

